

Welcome to The Residences in Dubai Festival City, For A Peaceful Living

AED 2,400,000 - ID: I-S-R-DFC-OF-0816-02 - Dubai Festival City Dubai Festival City - Apartment



BUA 1,546Sq Ft, Welcome to The residences in Dubai festival city, for a peaceful living

For detailed virtual tours of properties in Dubai, visit www.capellaproperties.ae
capella properties, Redefining Real Estate in Dubai UAE

Dubai festival city is located 5 minutes from Dubai airport, a complete family living with easy access to Dubai airport, Deira, downtown Dubai etc this community is linked to Dubai creek.

The community overlooks the golf-course and has all the amenities at its door step, the cobbled walkways and the lush green of the community gives the residents a sense of peace and calm. These apartments are beautifully designed with plenty of room for storage, wide balconies, impeccable fitting and plenty of sunshine in the rooms overlooking the greenery. This specific unit has a large terrace overlooking the community, built like quaint hillside villages along the Mediterranean coast these apartments set in a timelessness away from the hectic city life.

Unit features:

- BUA 1,546Sq Ft
- 1 allocated parking space in the basement
- 2 En-suite bathroom
- 1 terrace
- Built-in wardrobe

Bedrooms	2
Bathrooms	3
Plot Size	1645 sq ft
Living Area	1546 sq ft
Parking	1
Available From	13-Sep-2016
Ensuite	2
Half Bath	1
Maid Room	1
Maids Bath	1
Price/Area	1459 sq ft
Posting Date	13/09/2016
Store	1
View	Community

- Ceramic tiles
- Laundry room

- Maids room
- Powder room
- Store room

Community features:

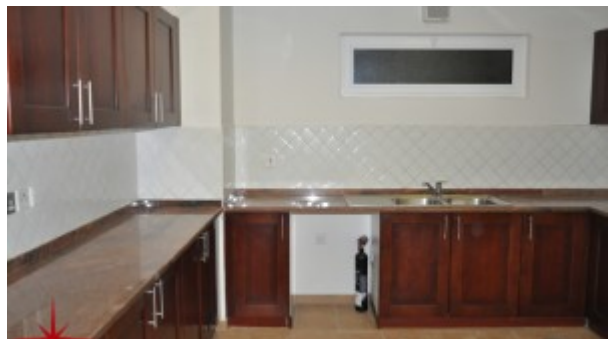
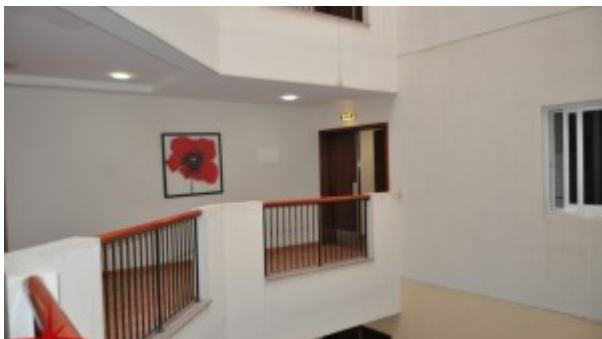
- 24/7 Security
- Central Air conditioned
- Firefighting system
- Maintenance
- Prayers services
- Visitors parking

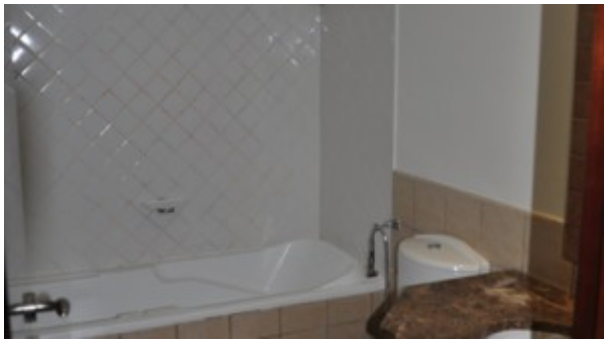
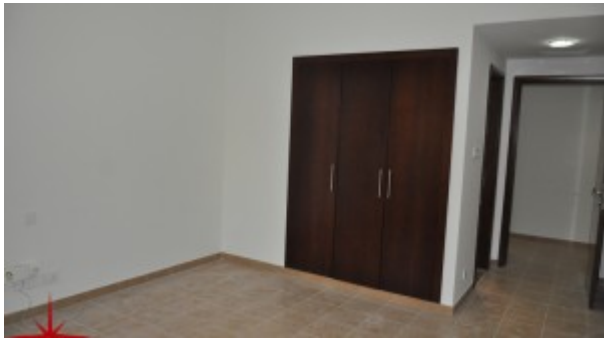
Please call us for exclusive viewing

056-2054400/04-3518133

Permit No. 4742

Property Gallery





Property URL



<https://capellaproperties.ae/property/welcome-to-the-residences-in-dubai-festival-city-for-a-peaceful-living-i-s-r-dfc-of-0816-02/>