

Upgraded, Spacious Townhouse With Easy Access to Al-Khail Road

Property is rented - ID: LR-JVC-OF-1117-01 - Jumeirah Village Circle Jumeirah Village Circle - Townhouse



BUA 4,481 Sq Ft – Upgraded, spacious townhouse with easy access to Al-Khail road

Bedrooms	4
Bathrooms	5
Plot Size	2885 sq ft
Living Area	4481 sq ft
Parking	2
Available From	16-Dec-2017
Ensuite	4
Half Bath	1
Maid Room	1
Maid's Bath	1
Price/Area	32 sq ft
Posting Date	16/12/2017
Store	1
View	Community

For detailed virtual tours of properties in Dubai, visit www.capellaproperties.ae
capella properties, Redefining Real Estates in Dubai UAE

A beautiful townhouse with easy access from street two in Jvc, making it convenient to enter and exit the community. Four bedrooms with plenty of sunshine, two master bedrooms, built-in closets – a functional kitchen with terraces and balconies on every floor in every room. These townhouses are perfect for a large family.

Since its inception, Lootah Real Estate Development has acted as the pioneering real estate development arm of Lootah Holding. Through a culture of excellence and an unwavering commitment to providing the very highest standards of living, Lootah Real Estate Development's employees have not only achieved but exceeded, the most ambitious of goals. Already over 1,000 units have been delivered to satisfied occupants, with much more planned for the future.

Unit Features:

- BUA 4885 sq feet
- 2 parking
- 2 balconies
- 2 terraces
- 2 master bedrooms

- Built-in wardrobe
- Maids room with bathroom

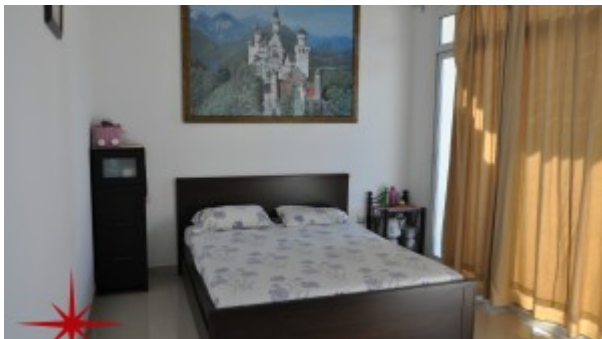
- Jacuzzi
- Private garden
- stove
- Walk-in closet

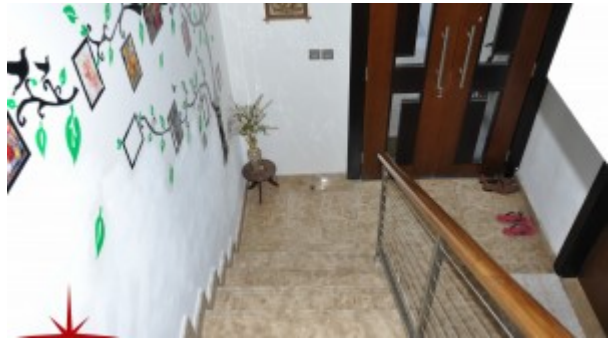
Community Features:

- Park
- Mall
- Security

Please call us for exclusive viewing
056-2054400/04-3518133
Permit No. 18950

Property Gallery





Property URL



<https://capellaproperties.ae/property/upgraded-spacious-townhouse-with-easy-access-to-al-khail-road-lr-jvc-of-1117-01/>