

# Upgraded and furnished 2 bedroom with maids in Al seef 2, corner unit

Property is sold - ID: SR-JLT-OF-0318-01 - Al Seef Tower Jumeirah Lake Towers - Apartment



## BUA 1'649SqFt, Upgraded 2 bedroom with maids in Al Seef 2, corner uSeef

Bedrooms	2
Bathrooms	3
Plot Size	1649 sq ft
Living Area	1649 sq ft
Parking	1
Available From	9-Apr-2018
Ensuite	2
Half Bath	1
Maid Room	1
Maids Bath	1
Price/Area	1031 sq ft
Posting Date	09/04/2018
Store	1
View	Jumeirah Lake

Al seef towers are one of the many cluster towers in JLT – developed by Deyaar these apartments have been lived in for a few years, delivered at a time when JLT was not a living destination these towers have stood the test of time. These apartments have been in demand due to their quality, space and the proximity to the metro station.

Jumeirah lake towers has become a community that thrives on its social with plenty of eating out options, day-to-day amenities, surrounded by four calming artificial lakes, landscaped gardens and meandering waterways, spread over two hundred hectares of land. Conveniently located along main Sheikh Zayed Road, JLT is easily assessable by virtue of two Metro stations – Dubai Marina and JLT – Jumeirah Lake Towers is a large development consisting of seventy-nine towers with both residential and commercial projects

JLT is a free-zone as well as a freehold, an ideal place for living, working, shopping and dining with five children playgrounds, and other facilities complementing the high-life Dubai living

JLT embraces and nurtures both business and community living

### Unit Features:

- BUA 1'649SqFt

- Ceramic Tiles
- 2 allocated parking space

- 1 balcony
- Built in wardrobes
- Closed kitchen
- Glazed walls
- Wall-to-wall wooden panel
- Maids room

**Community Features:**

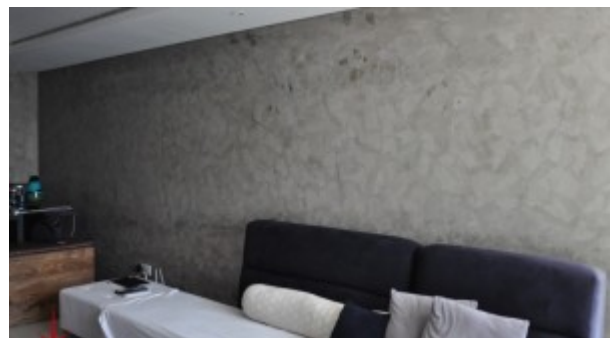
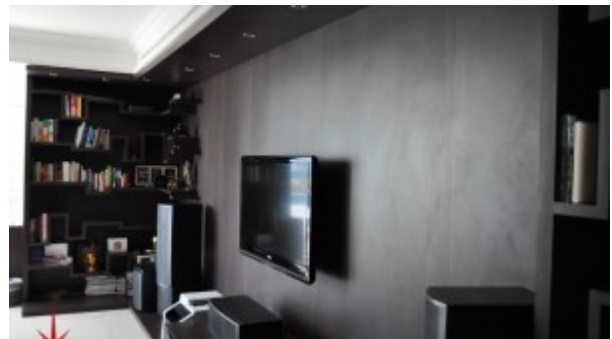
- 24/7 Security
- Central A/C
- Children's play area outside
- Firefighting system
- Fitness club
- Maintenance
- Pets allowed
- Swimming pool
- Visitors parking

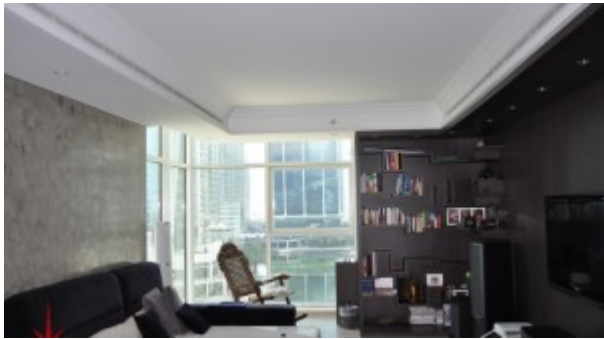
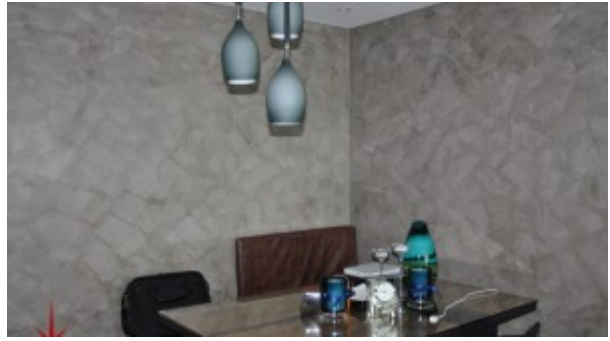
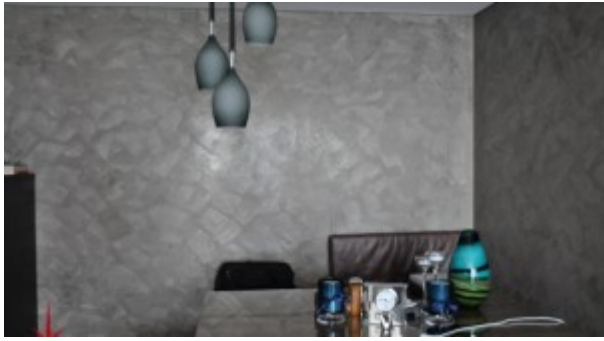
**Please call us for an exclusive viewing**

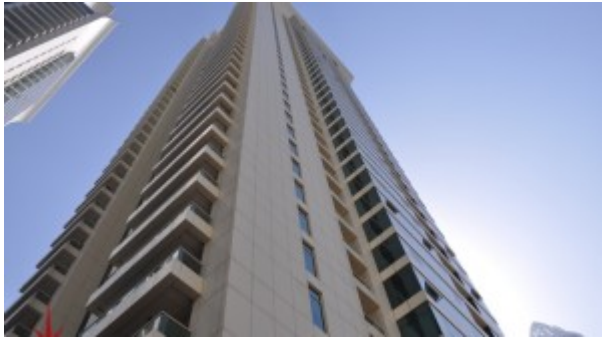
**056-2054400/04-3518133**

**Permit No. 18950**

**Property Gallery**







## Property URL



<https://capellaproperties.ae/property/upgraded-and-furnished-2-bedroom-with-maids-in-al-seef-2-corner-unit-sr-jlt-of-0318-01/>