

Jumeirah Lake Towers, Stunning Golf Course View from Higher View, Fully Fitted Office with Built-in Kitchenette in X2 Tower

Property is sold - ID: I-S-C-JLT-IA-XX-0713-02 - Jumeirah Bay X2 Jumeirah Lake Towers - Office



Stunning Golf Course View from Higher View, Fully Fitted Office with Built-in Kitchenette in X2 Tower

Bathrooms	1
Plot Size	1238 sq ft
Parking	1
Available From	27-08-2013
Price/Area	1100 sq ft
Posting Date	09/09/2013
View	Stunning Golf Course

Jumeirah Lake Towers is a large development consisting of seventy nine towers with residential and commercial properties surrounded by four calming artificial lakes, landscaped gardens and meandering waterways, spread over two hundred hectares of land. Conveniently located along main Sheikh Zayed Road, JLT is easily assessable by virtue of two Metro stations – Dubai Marina and JLT

JLT's commercial towers is an exceptional investment opportunity

JLT is a free-zone as well as a free-hold, an ideal place for living, working, shopping and dining with five children playgrounds, and other facilities complementing the high-life Dubai living

JLT embraces and nurtures both business and community living

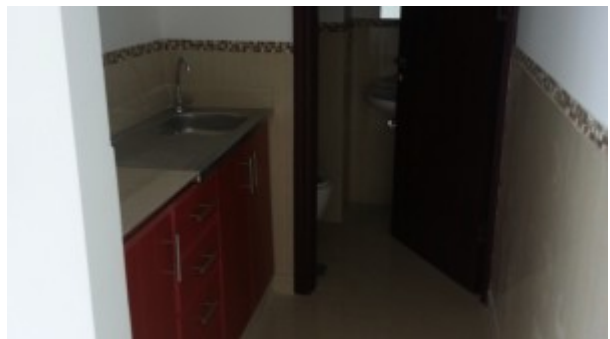
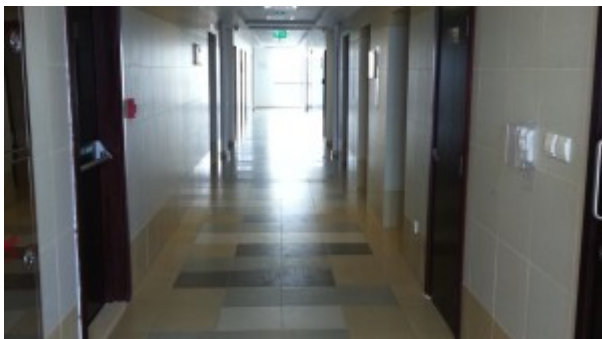
Features:

- Golf course view
- Built-in Kitchenette
- 01 Bath Room
- Visitors Parking
- 01 allocated car parking space
- 24 Hours Security

- Lease Management
- Licensed Restaurant
- Central A/C
- Light fittings
- Ceramic Tiles
- Landscaped internal courtyards
- Maintenance
- Property Management

Please call us for exclusive viewing
056-2054400/04-3518133
Permit No. 4742

Property Gallery





Property URL



http://chart.apis.google.com/chart?cht=qr&chs=250x250&chld=H|0&chl=https%3A%2F%2Fcapellaproperty

<https://capellaproperties.ae/property/stunning-golf-course-view-from-higher-view-fully-fitted-office-with-built-in-kitchenette-in-x2-tower-i-s-c-jlt-ia-xx-0713-02/>