

Spacious unit with Maids room in Marina 3 Residences Across from Nakheel Mall

Property is rented - ID: I-L-R-PMJ-OF-0616-01 - Marina Residences Palm Jumeirah - Apartment



BUA 1,735 Sq Ft, Spacious unit with Maids room in Marina 3 residences across from Nakheel Mall

| | |
|----------------|------------|
| Bedrooms | 2 |
| Bathrooms | 3 |
| Plot Size | 1735 sq ft |
| Living Area | 1735 sq ft |
| Parking | 1 |
| Available From | 4-Jun-2016 |
| Ensuite | 2 |
| Half Bath | 1 |
| Maid Room | 1 |
| Maids Bath | 1 |
| Price/Area | 86 sq ft |
| Posting Date | 04/06/2016 |
| View | Community |

For detailed virtual tours of properties in Dubai, visit www.capellaproperties.ae
capella properties, Redefining Real Estate in Dubai UAE

Located on the trunk of palm Jumeirah these are apartments come equipped with all the white goods. These apartments are strategically located across the road from the up and coming Nakheel Mall, the only mall in Palm Jumeirah.

Palm Jumeirah is the world's largest man-made island. It is a residential and tourism destination launched in the early 2000. It includes a beautiful and luxurious community living with ample amount of entertainment and leisure to be enjoyed by those visiting and living, with excellent views of the sea and marina

Palm Jumeirah like its name is environment friendly reclaimed island. It hosts the famous Atlantis hotel situated at the crescent of the palm. The crescent of the palm is connected to the top of the palm by a subsea tunnel. It has a main trunk which hosts residential apartments, hotels and retail and the villas are located on the fronds protected from the sea by breakwaters

Palm Jumeirah is one the most prestigious locations to live in Dubai

Unit features:

- BUA 1,735Sq Ft
- 2 allocated parking space in the basement
- 2 en-suite apartment

- Built-in wardrobe
- Ceramic tiles
- Dishwasher
- Electric stove
- Electric Oven
- Fridge
- Light fittings
- Maids room with attached bathroom
- Terrace
- Washing Machine

Community features:

- 24/7 Security
- Central A/C
- Children's play area outside
- Pets allowed
- Firefighting system
- Fitness club
- Maintenance
- Prayers services
- Restaurants
- swimming pools
- Visitors parking

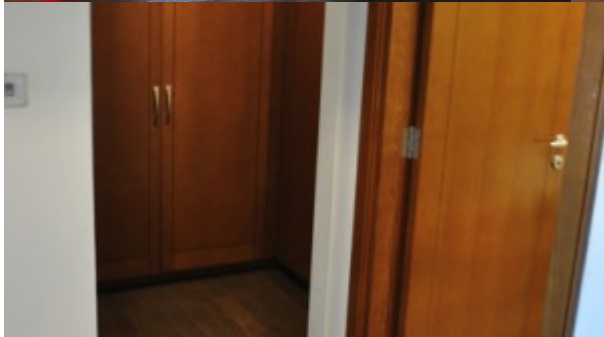
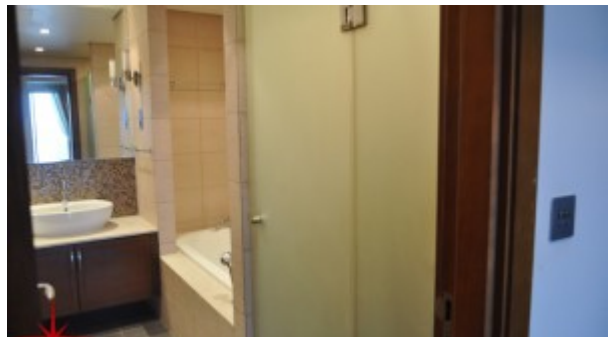
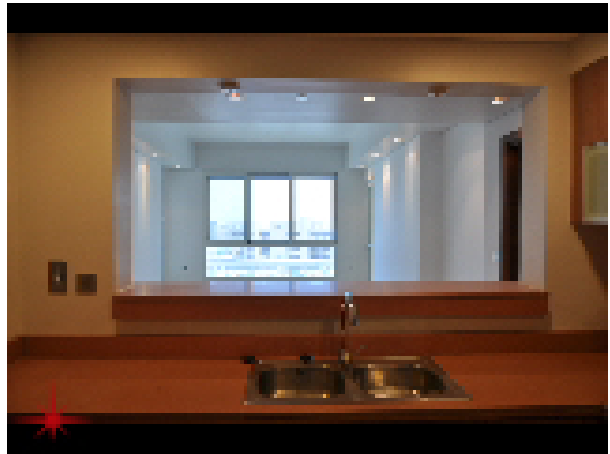
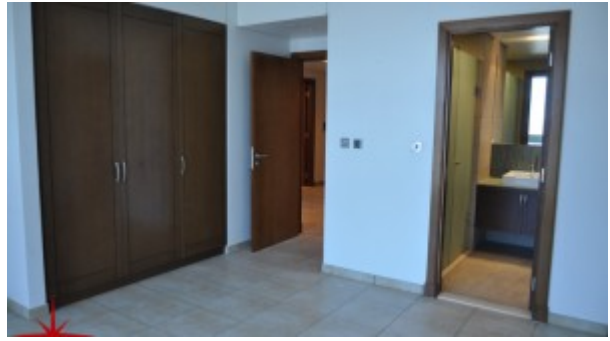
Please call us for exclusive viewing

056-2054400/04-3518133

Permit No. 4742

Property Gallery





Property URL



image not found
<http://chart.apis.google.com/chart?cht=qr&chs=250x250&chld=H|0&chl=https%3A%2F%2Fcapellaproperties>

<https://capellaproperties.ae/property/spacious-unit-with-maids-room-in-marina-3-residences-across-from-nakheel-mall-i-l-r-pmj-of-0616-01/>