

# Shell and Core Retail Space for F and B, Utilities with Mezzanine Level in a Prestigious Building

AED 567,220 - ID: I-L-C-BSB-OF-1216-02 - Burj Khalifa District - Shop/Showroom/Restaurant



## **BUA 2,807Sq Ft, Shell and core retail space for f&B/utilities with mezzanine level in a prestigious building**

Plot Size	2807 sq ft
Living Area	2807 sq ft
Parking	02
Available From	10-Dec-2016
Price/Area	203 sq ft
Posting Date	10/12/2016
View	Creek/Burj Khalifa

For detailed virtual tours of properties in Dubai, visit [www.capellaproperties.ae](http://www.capellaproperties.ae)  
capella properties, Redefining Real Estate in Dubai UAE

This specific unit is best for food and beverage outlet with easy access to the parking. The tower is built for business, this commercial project marries functionality with superior design at the heart of Dubai's primetime locale. The property offers an unrivaled location within Business Bay where business and pleasure come together and boasts prestigious neighbors such as the Burj Khalifa, Dubai International Financial Centre, the World Trade & Convention Centre and

Emirates Towers.

Taking advantage of its excellent location, the dual tower structure maximizes the waterside view. The twin towers connect at the base to open up to a grand lobby with a magnificent wall feature that leads guests into the lift lobby. The lobby is highly equipped with technology inclusive of information portals for tenants and guests. Within the grand lobby, there is also a waiting area which is furnished with contemporary seating and screens.

The building offers outlets facing the creek on the promenade which will integrate with the Dubai Canal. It also offers signature glass outlets that stand tall in front of the tower facing the roadside with an engaging view.

### **Unit features:**

- BUA 1,584Sq Ft + 1,223Sq ft = 2,807Sq Ft
- 2 allocated parking space in the basement

Inclusive services:

- Reception
- Concierge
- Valet parking
- Security

**Community features:**

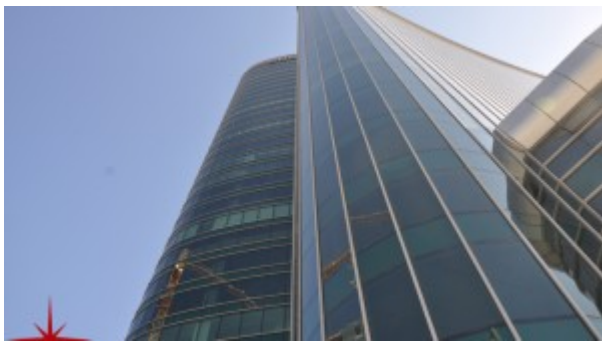
- 24/7 Security
- Central Air conditioned
- Common washroom
- Concierge
- Firefighting system
- Maintenance
- Prayers services
- Visitors parking

**Please call us for exclusive viewing**

**056-2054400/04-3518133**

**Permit No. 4742**

## Property Gallery





## Property URL



image not found  
<http://chart.apis.google.com/chart?cht=qr&chs=250x250&chld=H|0&chl=https%3A%2F%2Fcapellaproperties.ae/property/shell-and-core-retail-space-for-f-and-b-utilities-with-mezzanine-level-in-a-prestigious-building-i-l-c-bsb-of-1216-02/>

<https://capellaproperties.ae/property/shell-and-core-retail-space-for-f-and-b-utilities-with-mezzanine-level-in-a-prestigious-building-i-l-c-bsb-of-1216-02/>