

Shell and Core Offices in Prime Business Tower A

AED 88,605 - ID: I-L-C-JVC-OF-0516-02 - Jumeirah Village Circle Jumeirah Village Circle - Office



BUA 1,611 Sq Ft, Shell and core offices in Prime business Tower A

Plot Size	1611 sq ft
Living Area	1611 sq ft
Parking	2
Available From	4-Jun-2016
Half Bath	1
Price/Area	55 sq ft
Posting Date	04/06/2016
View	Burj Khalifa / Lake / JW Marriott

For detailed virtual tours of properties in Dubai, visit www.capellaproperties.ae
capella properties, Redefining Real Estate in Dubai UAE

Prime Business Centre located at Jumeirah Village is the ultimate business address for all your commercial and professional needs. Prescott has designed and built a visually arresting building that maximises public spaces within its core. Customer friendly floor plans, state of the art equipment and full suite of business services underscore the advanced concept of doing business today.

Located in Jumeirah Village circle, it is the best option for you. With easy access to Sheikh Zayed Road, Al Makhtoum International Airport, Sports city, Dubai International Airport is also only 20 minutes away.

Unit features:

- BUA 1,611 Sq Ft
- 2 parking space
- Pantry
- Private washroom

Community features:

- 24/7 Security
- Central A/C
- Firefighting system

- Maintenance
- Visitors parking

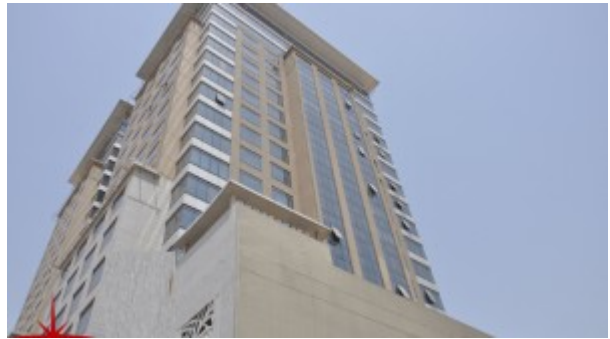
Please call us for exclusive viewing

056-2054400/04-3518133

Permit No. 4742

Property Gallery





Property URL



<https://capellaproperties.ae/property/shell-and-core-offices-in-prime-business-tower-a-i-l-c-jvc-of-0516-02/>