

# Sheikh Zayed Road, Semi Fitted Office with Private Pantry and Washroom

AED 149,000 - ID: I-L-C-SZR-HK-1216-02 - Skeikh Zayed Road - Office



## BUA 1,300 Sq Ft, Sheikh Zayed Road, Semi-Fitted Office with Private Pantry & Washroom

Plot Size	1300 sq ft
Living Area	1300 sq ft
Parking	1
Available From	7-Dec-2016
Price/Area	115 sq ft
Posting Date	07/12/2016
View	Community View

For detailed virtual tours of properties in Dubai, visit [www.capellaproperties.ae](http://www.capellaproperties.ae)  
capella properties, Redefining Real Estate in Dubai UAE

This is a low-rise building located on the main Sheikh Zayed Road positioned near the metro station. Sheikh Zayed Road is the main artery of the city. The highway runs parallel to the coastline from Trade Centre Roundabout to the border with the emirate of Abu Dhabi, 55 kilometres away in the area of Jebel Ali

The Sheikh Zayed Road is home to most of Dubai's skyscrapers, including the Emirates Towers. The highway also connects other new developments such as the Palm Jumeirah and Dubai Marina. The road has most of the Red Line of Dubai Metro running alongside it. In Dubai itself, much of the highway has seven to eight lanes in each direction.

### Unit features:

- BUA 1,300 Sq Ft
- Built in Kitchenette
- Ceramic Tiles
- Light fittings
- Parking 01

### Community features:

- 24/7 Security

- Central A/C
- Coffee Shop
- Common washroom
- Firefighting system
- Maintenance
- Prayer services
- Visitors parking

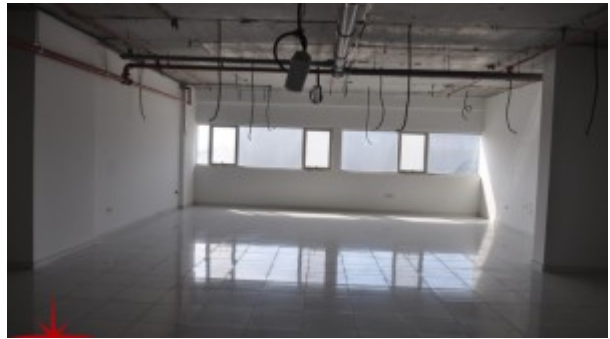
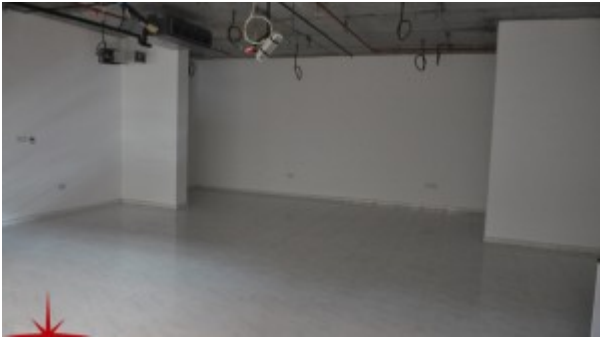
**Please call us for exclusive viewing**

**056-2054400/04-3518133**

**Permit No. 4742**

## **Property Gallery**





## Property URL



image not found  
<http://chart.apis.google.com/chart?cht=qr&chs=250x250&chld=H|0&chl=https%3A%2F%2Fcapellaproperties.ae/property/sheikh-zayed-road-semi-fitted-office-with-private-pantry-and-washroom-i-l-c-szr-hk-1216-02/>

<https://capellaproperties.ae/property/sheikh-zayed-road-semi-fitted-office-with-private-pantry-and-washroom-i-l-c-szr-hk-1216-02/>