

Jumeirah Lake Towers (JLT) – Scenic Golf Course View – Fitted office in X2 Tower

Property is sold - ID: I/S/C/JLT/IA/XX/0713/05 - Jumeirah Bay X2 Jumeirah Lake Towers - Office



Scenic Golf course view – Fitted office in X2 Tower

Bathrooms	1
Plot Size	1163 sq ft
Parking	1
Available From	28-08-2013
Price/Area	1100 sq ft
Posting Date	09/09/2013
View	Scenic Golf Course

Jumeirah Lake Towers is a large development consisting of seventy nine towers with residential and commercial properties surrounded by four calming artificial lakes, landscaped gardens and meandering waterways, spread over two hundred hectares of land. Conveniently located along main Sheikh Zayed Road, JLT is easily assessable by virtue of two Metro stations – Dubai Marina and JLT JLT's commercial towers is an exceptional investment opportunity!!

JLT is a free-zone as well as a free-hold, an ideal place for living, working, shopping and dining with five children playgrounds, and other facilities complementing the high-life Dubai living

JLT embraces and nurtures both business and community living

Features:

- Golf course view
- 01 wash room
- 01 allocated parking
- Visitors parking
- Ceramic tiles
- Light fittings
- 24 hours security
- Lease management
- Licensed restaurant
- Central A/C

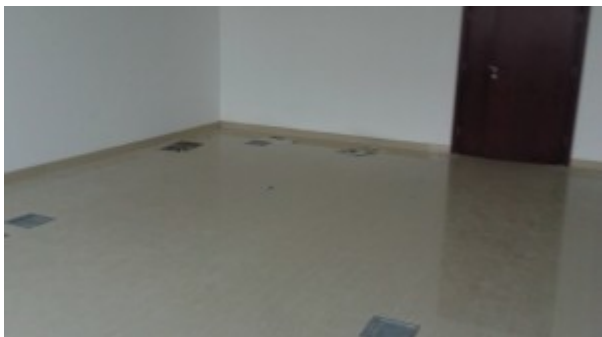
- Landscape internal courtyards
- Maintenance
- Property management
- Common washroom
- Firefighting system

Please call us for exclusive viewing

056-2054400/04-3518133

Permit No. 4742

Property Gallery





Property URL



http://chart.apis.google.com/chart?cht=qr&chs=250x250&chld=H|0&chl=https%3A%2F%2Fcapellaproperty

<https://capellaproperties.ae/property/scenic-golf-course-view-fitted-office-in-x2-tower-2/>