

# Palm Jumeirah, Large 2 BR Apt With Marina Skyline and Sea View

Property is rented - ID: I-L-R-PMJ-HK-1115-01 - Palm Jumeirah The Fairmont Palm Residences - Apartment



Bedrooms	2
Bathrooms	3
Plot Size	1788 sq ft
Living Area	1788 sq ft
Parking	1
Available From	19-Nov-2015
Ensuite	2
Half Bath	1
Posting Date	19/11/2015
View	Community/Sea and Marina Skyline View

## BUA 1,788Sq Ft, Palm Jumeirah, Large 2 BR Apt With Marina Skyline and Sea View

For detailed virtual tours of properties in Dubai, visit [www.capellaproperties.ae](http://www.capellaproperties.ae)  
capella properties, Redefining Real Estates in Dubai UAE

Within the Palm Jumeirah you will find grocery shops, salons, spas, restaurants and bars. Together with children's play areas, cafes and even a travel agency

Is the world's largest man-made island. It is a residential and tourism destination launched in the early 2000. It includes a beautiful and luxurious community living with ample amount of entertainment and leisure to be enjoyed by those visiting and living, with excellent views of the sea and marina

Palm Jumeirah like its name is environment friendly reclaimed island. It hosts the famous Atlantis hotel situated at the crescent of the palm. The crescent of the palm is connected to the top of the palm by a subsea tunnel. It has a main trunk which hosts residential apartments, hotels and retail and the villas are located on the fronds protected from the sea by breakwaters

Palm Jumeirah is one the most prestigious locations to live in Dubai

**Unit features:**

- BUA 1,788Sq Ft
- Balcony
- Built-in Wardrobes
- Built in Kitchenette
- Dishwasher
- Washing machine
- Stove
- Ceramic Tiles
- Light fittings

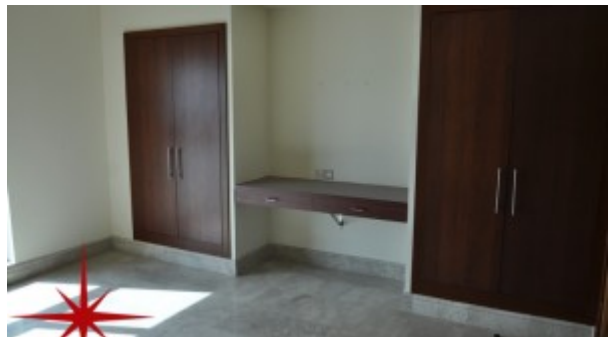
**Community features:**

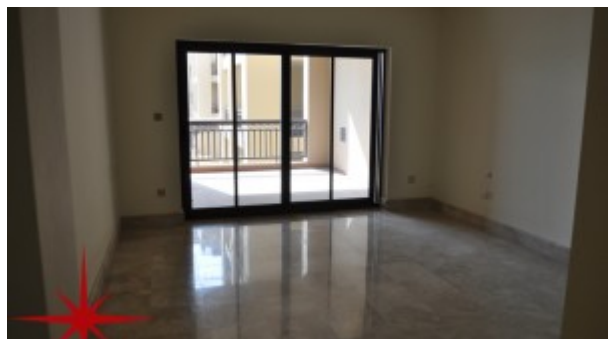
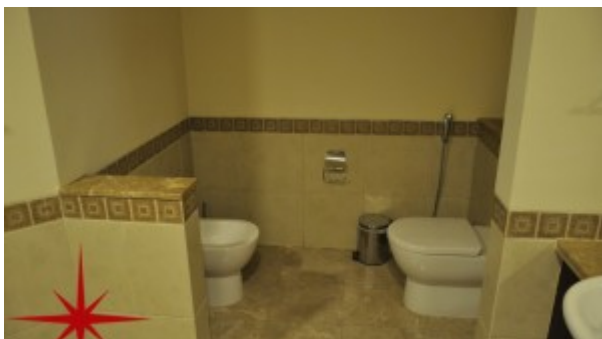
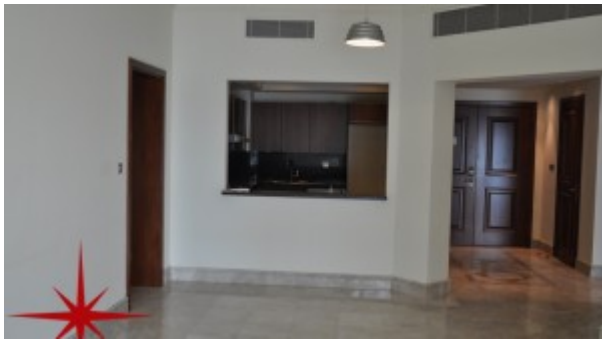
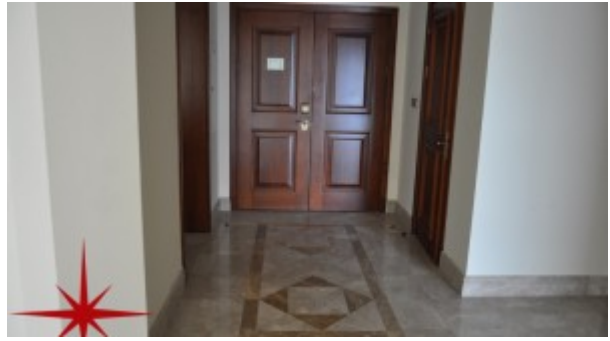
- 24/7 Security
- Central A/C
- Children's swimming pool
- Children's play area outside
- Coffee Shop
- Community center
- Firefighting system
- Fitness club
- Licensed restaurant
- Maintenance
- Swimming pool
- Tennis court
- Visitors parking

**Please call us for exclusive viewing**

**056-2054400/04-3518133**

**Permit No. 4742**

**Property Gallery**





## Property URL



http://chart.apis.google.com/chart?cht=qr&chs=250x250&chld=H|0&chl=https%3A%2F%2Fcapellaproperty

<https://capellaproperties.ae/property/palm-jumeirah-large-2-br-apt-with-marina-skyline-and-sea-view/>