

Main Sheikh Zayed Road, Freehold, Shell And Core Office, Sales & Lease

AED 73,710 - ID: I-L-C-SZR-CP-0414-04 - Skeikh Zayed Road - Office



Plot Size	1053 sq ft
Living Area	1053 sq ft
Parking	1
Available From	25-Jan-14
Price/Area	70+Maintenance Charges sq ft
Posting Date	24/01/2014
View	Main Sheikh Zayed Rd/Sea

1,053Sq Ft – The ultimate office address in Dubai “Latifa Towers”, located close to (WTC) World Trade Center and (DIFC) Dubai International Financial Center, on Main Sheikh Zayed Road

For detailed virtual tours of properties in Dubai, visit www.capellaproperties.ae

Positioned between two metro stations, this spectacular commercial tower with 37 floors of shell and core offices contained in Tower B with retail on the ground and Mezzanine floors.

Latifa Towers comprises of two towers, the front tower on main Sheikh Zayed Road is dedicated for offices and the one behind is for residential tower, providing peace of mind to its residents so they can enjoy the restaurants and hustle & bustle of High Dubai

Life, yet at the same time enjoy their privacy. The separate dedicated car parking building with sky bridges connecting to commercial tower is separately located for the convenience of both commercial and residential tower residents and guests.

Unit features:

- 1,053Sq Ft
- Shell & core unit
- Unique freehold Property on main Sheikh Zayed Road

Community features:

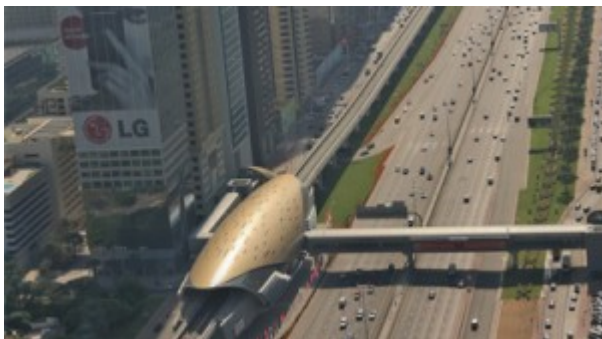
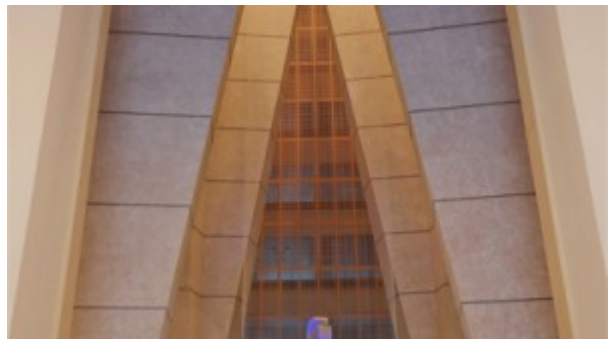
- 24/7 security
- 7 dedicated high speed elevators
- Beautiful atrium lobby
- Central A/C
- Coffee shop
- Common washroom
- 1 allocated car parking
- Firefighting system
- Lease management
- Licensed restaurants
- Maintenance
- Property management
- Spectacular atrium entrance and lounge area joining the residential and office towers
- Visitors parking

Please call us for exclusive viewing

056-2054400/04-3518133

Permit No. 4742

Property Gallery





Property URL



<https://capellaproperties.ae/property/main-sheikh-zayed-road-shell-core-office-freehold-6/>