

Main Sheikh Zayed Road, shell and core offices on a full floor with great views

AED 1,272,810 - ID: I-L-C-SZR-OF-0715-05 - Skeikh Zayed Road - Full Floor Office



Living Area	7714 sq ft
Parking	8
Available From	11-Jul-2015
Half Bath	4
Price/Area	165 sq ft
Posting Date	11/07/2015
View	Sheikh Zayed Road/Burj Khalifa/Sea

BUA 7,714Sq Ft, Main Sheikh Zayed Road, shell and core offices on a full floor with great views

For detailed virtual tours of properties in Dubai, visit www.capellaproperties.ae

Positioned between two metro stations, this spectacular commercial tower with 52 floors of shell and core offices and 8 floors of parking with retail on the ground floor is a perfect place for a work/play lifestyle. The tower is conveniently located within 2 minutes walking distance and only 10 minute drive to Dubai international airport. The building has stunning views of sheikh zayed road, burj khalifa and the sea, close to all major 5 star

hotels this is an office address to have. Other features include multi-storey car parking for 900 cars and a valet service, 8 lifts in service, individual BTU meter in each office and 2 dedicated parking spots for tenants.

Unit features:

- 1 washroom
- 2 parking space
- BUA 7,714Sq Ft
- Built-in kitchenette
- Private washroom

Community features:

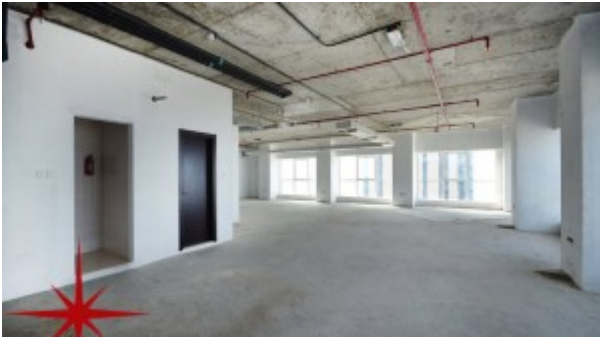
- 24/7 Security
- Central A/C

- Coffee shop
- Firefighting system
- Maintenance
- Prayers services
- Visitors parking

Please call us for exclusive viewing
056-2054400/04-3518133
Permit No. 4742

Property Gallery





Property URL



<https://capellaproperties.ae/property/main-sheikh-zayed-road-shell-and-core-offices-on-a-full-floor-with-great-views-i-l-c-szr-of-0715-05/>