

Latifa Tower, Fully Fitted Office With SZR View

AED 202,582 - ID: LC-SZR-CP-0718-01 - Skeikh Zayed Road - Office



Plot Size	2894 sq ft
Living Area	2894 sq ft
Parking	3
Available From	25-Jul-2018
Price/Area	70+Service Charges sq ft
Posting Date	25/07/2018
View	Main Sheikh Zayed Rd/Sea

BUA 2,894Sq Ft, The ultimate office address in Dubai “Main Sheikh Zayed Road”, located between Fairmont and Shangri-la Hotels on Main Sheikh Zayed Road

Few units have Sheikh Zayed Road Views and are available for both sales and leasing

For detailed virtual tours of properties in Dubai, visit www.capellaproperties.ae
capella properties, Redefining Real Estate in Dubai

Positioned between two metro stations, this spectacular commercial tower with 37 floors of shell and core offices, with retail on the ground and Mezzanine floors is the only freehold building on Main Sheikh Zayed Road

Where you can enjoy the restaurants and hustle & bustle of High Dubai Life, yet at the same time enjoy privacy. The separate dedicated car parking building with sky bridges connecting to the commercial tower is separately located for the convenience of both commercial and residential tower residents and guests

Units features:

- Fully Fitted unit with endless views of SZR
- Unique freehold Property on main Sheikh Zayed Road

Community features:

- 24/7 security
- 7 dedicated high-speed elevators
- Beautiful atrium lobby
- Central A/C

- Coffee shop
- Common washroom
- Dedicated car parking/parking's depending on the selected unit
- Firefighting system
- Lease management
- Licensed restaurants
- Maintenance
- Property management
- Spectacular atrium entrance and lounge areas
- Visitors parking's

Please call us for an exclusive viewing

056-2054400/04-3518133

Permit No. 18950

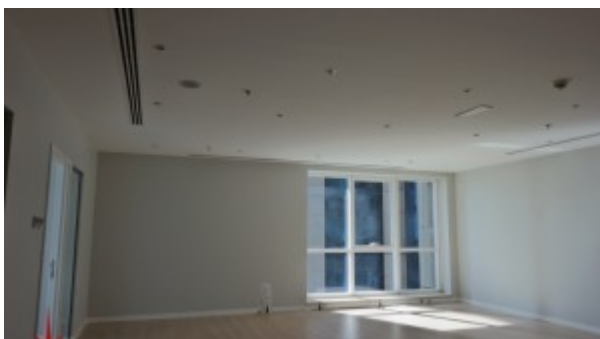
Property Gallery



SAMSUNG CSC



SAMSUNG CSC



SAMSUNG CSC



SAMSUNG CSC



SAMSUNG CSC



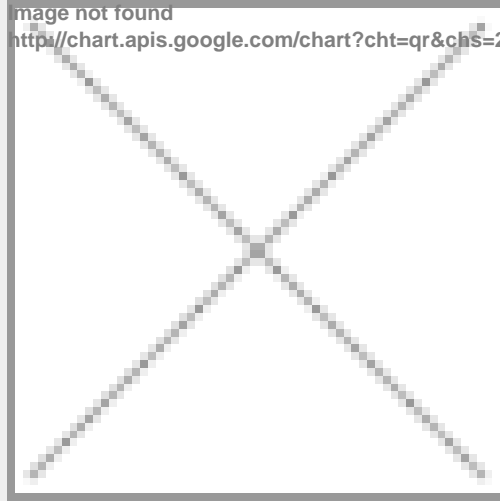
SAMSUNG CSC



SAMSUNG CSC



Property URL



<https://capellaproperties.ae/property/main-sheikh-zayed-road-fully-fitted-office-freehold-lc-szr-cp-0718-01/>