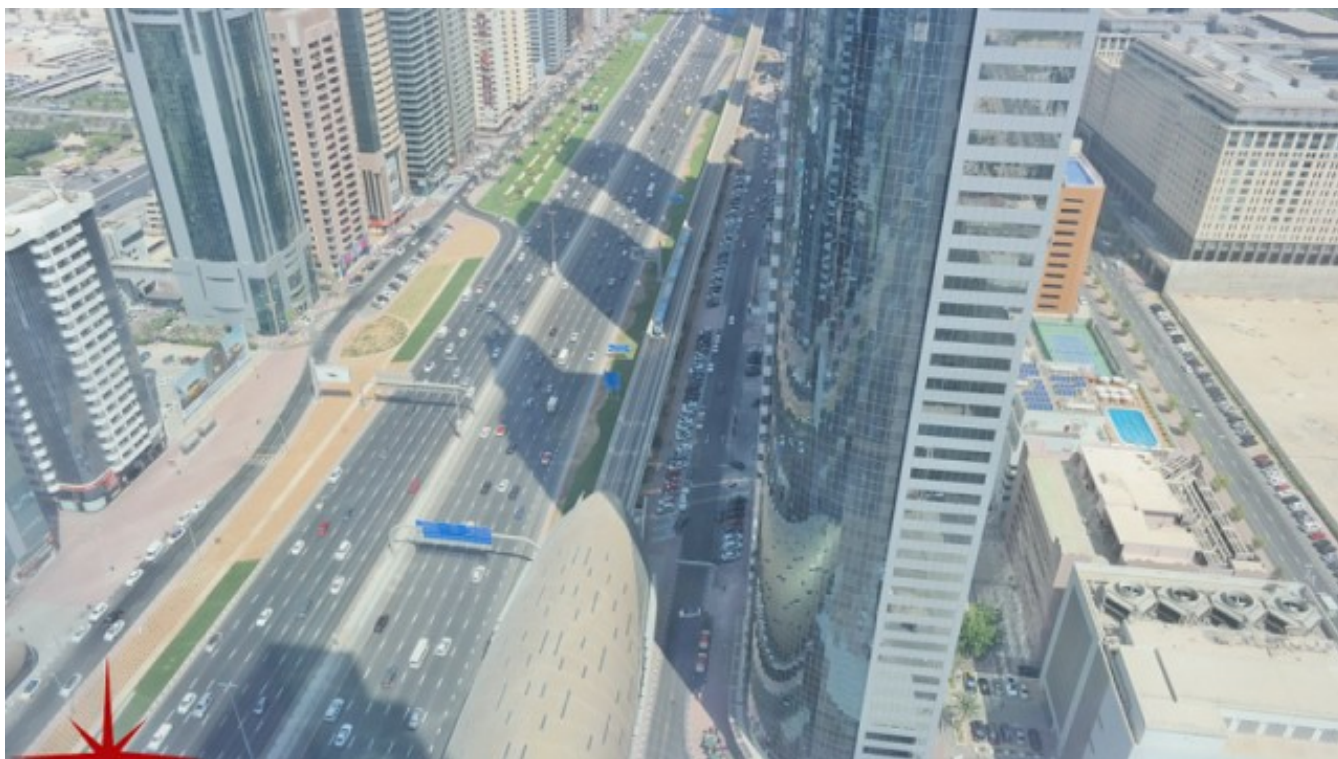


Luxurious 3BR Apt on Higher Floor with Main SZR View

Property is rented - ID: I-L-R-SZR-CP-XX-1016-02 - Skeikh Zayed Road - Apartment



Bedrooms	3
Bathrooms	3
Plot Size	1550 sq ft
Living Area	1550 sq ft
Parking	2
Available From	29-Nov-2016
Ensuite	1
Half Bath	1
Maid Room	1
Maids Bath	1
Price/Area	110 sq ft
Posting Date	29/11/2016
Store	1
View	Main Sheikh Zayed Road

BUA 1,550Sq Ft, Luxurious 3 bedroom apartment on Higher Floor with High-end finishing on Sheikh Zayed Road View

For detailed virtual tours of properties in Dubai, visit www.capellaproperties.ae
capella properties, Redefining Real Estate in Dubai UAE

This shimmering desert mirage Tower is part of the skyscrapers on Dubai's main road. It is positioned between two metro stations with 60 floors that contain luxurious apartments, offices, and retail. Where you can enjoy the restaurants and hustle and bustle of High Dubai Life, yet at the same time enjoy privacy. The separate dedicated car parking building with sky bridges connecting to the tower is separately located for the convenience of both commercial and residential tower residents and guests

Unit features:

- BUA 1,550Sq Ft
- Built-in wardrobes
- Ceramic tiles
- Children's swimming pool
- Wooden Floor
- Laundry room
- Light fittings
- Walk-in Closet

- Maids room
- Store room

Community features:

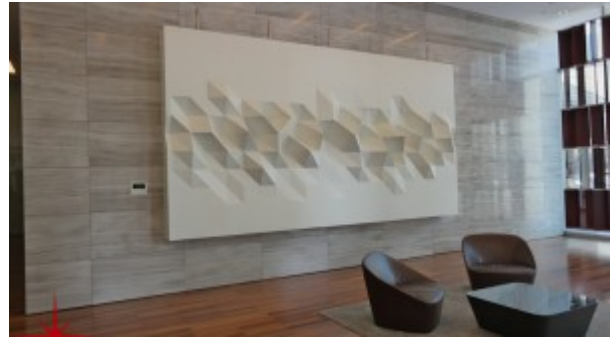
- 24/7 security
- Beautiful atrium lobby
- Central A/C
- 2 allocated car parking
- Firefighting system
- Lease management
- Licensed restaurants
- Maintenance
- Property Management
- Visitor Parking
- Shared Pool
- Shared Gymnasium

Please call us for exclusive viewing
056-2054400/04-3518133
Permit No. 4742

Property Gallery



SAMSUNG CSC



SAMSUNG CSC



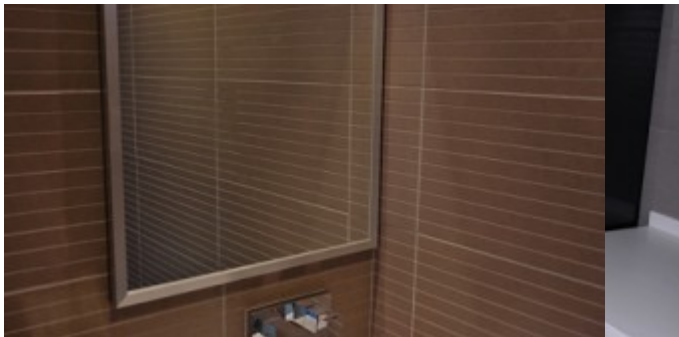
SAMSUNG CSC



SAMSUNG CSC



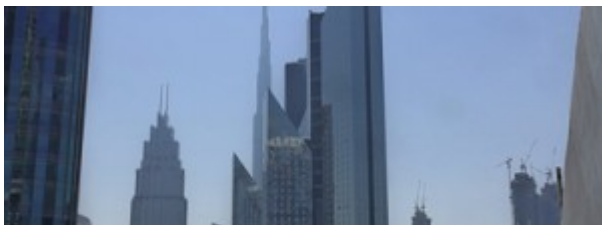
SAMSUNG CSC



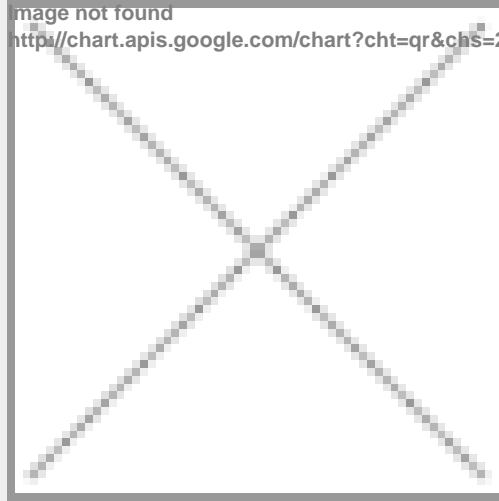
SAMSUNG CSC



SAMSUNG CSC



Property URL



<https://capellaproperties.ae/property/luxurious-3br-apt-on-higher-floor-with-main-szr-view-i-l-r-szr-cp-xx-1016-02/>