

Fitted office | Negotiable | Private Kitchenette in Tiffany, JLT

AED 83,100 - ID: LC-JLT-MP-0318-02 - Jumeirah Lake Towers Tiffany Tower - Office



BUA 1,108 Sq. Ft Fitted office | Negotiable | Private Kitchenette in Tiffany, JLT

Plot Size	1108 sq ft
Living Area	1108 sq ft
Parking	1
Available From	26-Mar-2018
Price/Area	75 sq ft
Posting Date	26/03/2018
View	Lake

For detailed virtual tours of properties in Dubai, visit www.capellaproperties.ae
capella properties, Redefining Real Estate in Dubai UAE

The office is a Fully fitted office with Marble flooring and each room is a customized room with a wooden parquet and offer stunning Lake View.
Tiffany tower is in Cluster W of Jumeirah Lake Towers, one of the busiest clusters with easy access to public transport including the metro. The Tower is a high rise building with a rectangular plan.

It is 43-Storey Skyscraper tower maintained immaculately and was developed by Nakheel – ensuring the high quality of the building.

This Skyscraper at the entrance to the Jumeirah Lake development responds to the clients call for a unique and impressive office building.

The body image can be further illustrating, and the intervening floors can be read as a spine that connects the two primary elements of structure and external wall. The refined upward sweep of the outer layer is carried to an overarching green glazed roof.

Below of the project is a staff restaurant together with a gymnasium which is dedicated for guest suites offering a commercial users repression.

The inhabitants, as well as the working class within the JLT, is benefitted with a wide range of facilities that within the reach such as quiet community areas, cafes terrace, shaded walkways and benches. Addition to that it also includes pavements fountains, lake fountains, garden near to avenues, groves of trees, desert gardens and bespoke sculptural features.

JLT embraces and nurtures both business and community living.

Consisting of regular grocery stores, laundries, cafes and retail outlets Jumeirah Lake Towers caters to the basic need and supply the entire daily requirement for the residents.

The amenities and facilities include the Elegant lobby with security, Medical center, community swimming pool, Recreation deck with gymnasium, Sauna, steam room, Jacuzzi, High-speed internet connections, Seven high-speed elevators, Ample general parking spaces, and Valet parking.

Unit features:

- BUA 1,089 Sq. Ft
- Fitted office with Balcony
- Built-in private washroom
- 1 dedicated parking spaces

Community Features:

- 24/7 Security
- Central A/C
- Basement Parking
- Cafes and Restaurants
- Prayer Area
- Gymnasium
- Property management
- Valet services parking

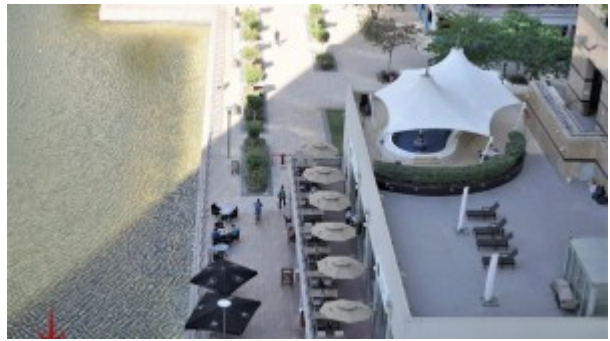
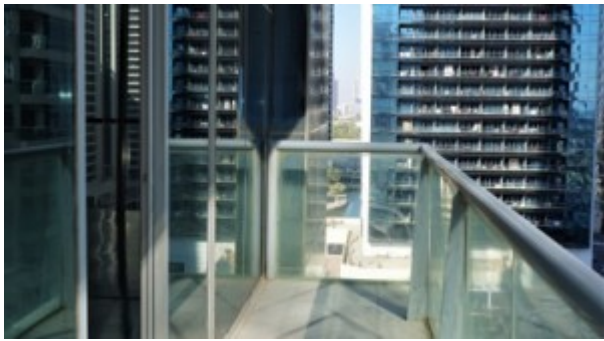
Please call us for an exclusive viewing

056-2054400/04-3518133

Permit No. 18950

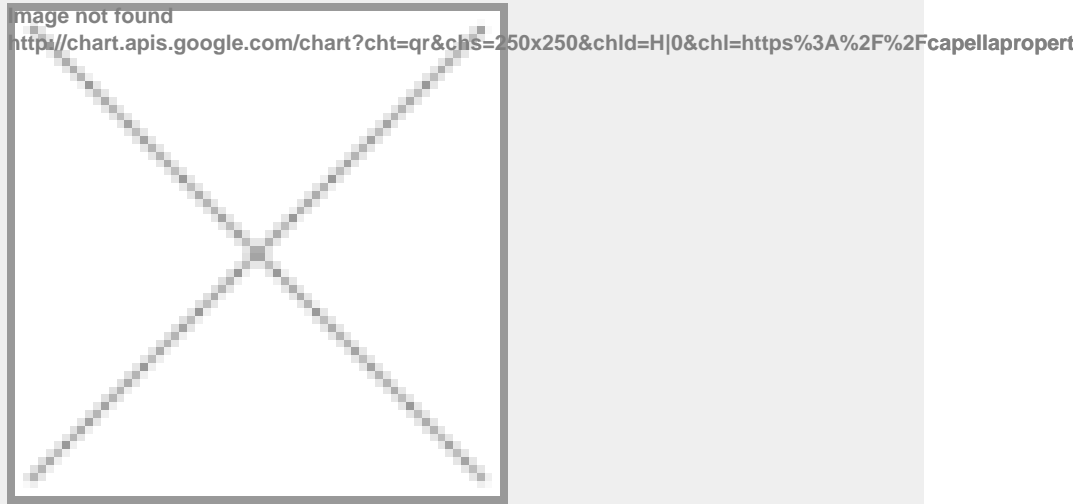
Property Gallery







Property URL



<https://capellaproperties.ae/property/lc-jlt-mp-0318-02/>