

JVC, Stunning 2 Bedrooms with Panoramic Views on Easy Payment Plan, Handover Dec 2016

Price on request - ID: PROP-13098 - Jumeirah Village Circle Jumeirah Village Circle - Apartment



Posting Date 24/01/2015

BUA 1,536Sq Ft Jumeirah Village Circle, stunning 2 bedrooms with panoramic views for sale by a premium developer on easy payment plan of 15 Months to be handed over by the end of 2016, with initial down payment of only 10% i.e.

AED 135,936/= and 50% on handover

1st Instalment on Initial deposit 10% on Booking AED 135,936/=

2nd Instalment, 10% on 6 months from the Initial deposit date After 06 Months AED 135,936/=

3rd Instalment, 10% on 9 months from the Initial deposit date After 9 Months AED 135,936/=

4th Instalment, 10% on 12 months from the Initial deposit date After 12 Months AED 135,936/=

5th Instalment, 10% on 15 months from the Initial deposit date After 15 Months AED 135,936/=

6th Instalment, 50% on handover AED 679,680/=

To be handed over by the end of 2016

* The payment schedule will be subject to change based on the time of purchase

This beautiful development is one of the very few high-rise developments with panoramic views of Jumeirah Village Circle and the Stadium/Golf Course in Dubai Sports City

A community that embodies functional yet stylish lifestyle where the residents will enjoy a unique blend of relaxation,

excitement and convenience through the many amenities on offer, whether it is shopping malls, food and beverage outlets, international schools, hypermarkets, branded boutiques or public parks

Located in Jumeirah Village circle, it is the best option for you. It is the exact kind of Dubai living that most people dream about in the region. Jumeirah Village is the ideal residence for people who love to work, play, and relax all within just a few minutes from each other. With easy access to Sheikh Zayed Road, Al Makhtoum International Airport, Sports city, Dubai International Airport is also only 20 minutes away

Unit features:

- BUA 1,536Sq Ft
- 3 Bathrooms
- Built-in wardrobe
- Ceramic tiles
- Light fittings
- 1 allocated parking space in the basement

Community features:

- 24/7 Security
- 2 Swimming pools
- 2 Gymnasiums
- BBQ area
- Central A/C
- Common washroom
- Children's swimming pool
- Children's play area inside
- Children's play area outside
- Firefighting system
- Leisure deck
- Maintenance
- Pets allowed
- Powder room for the guests
- Prayers services
- Tennis court
- Visitors parking

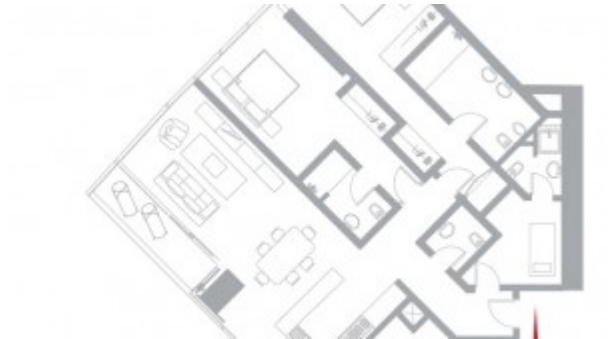
Please call us for exclusive viewing

056-2054400/04-3518133

Permit No. 18285

Property Gallery





Property URL



http://chart.apis.google.com/chart?cht=qr&chs=250x250&chld=H|0&chl=https%3A%2F%2Fcapellaproperty

<https://capellaproperties.ae/property/jumeirah-village-circle-stunning-1-bedroom-with-panoramic-views-on-easy-payment-plan-2-3/>