

# Jumeirah Park, 3 En-suite BR, Single Lane In front of the Park, Landscapped Garden, Legacy Large

Property is rented - ID: I/L/R/JPK/CP/0614/01 - Jumeirah Park Legacy - Villa



Bedrooms	3
Bathrooms	4
Plot Size	6679 sq ft
Living Area	3527 sq ft
Parking	2
Available From	2-Jul-14
Ensuite	3
Half Bath	1
Maid Room	1
Maid Bath	1
Price/Area	37 sq ft
Posting Date	02/07/2014
View	SZR, Skyline View

**BUA 3,527Sq Ft – Plot size is 6,679Sq Ft, (Large Plot) this Jumeirah Park Villa – Legacy, Large Villa has been well designed to optimize the Back Garden, with 3 En-suite Bedrooms with well-Equipped Kitchen, Storeroom + Laundry Room with fitted Washing Machine + Maids Room with Attached Bath+ Storeroom and Large Living Room on the Lower Level and Midsize Living Room at the Upper Level is ideal for family living!**

For detailed virtual tours of properties in Dubai, visit [www.capellaproperties.ae](http://www.capellaproperties.ae)

Jumeirah Park is strategically located alongside Sheikh Zayed Road, at the heart of Dubai and is one of the most desirable residential district spreading over 350 hectares. The community features more than 2,500 properties and combines well-crafted villas with the richness of expansive parks, eco-friendly green spaces and family orientated amenities

It is a family orientated development and one of the most desirable residential communities throughout Dubai. This fantastic area provides all the amenities a family would require including a day care center and play areas for the younger residents, while schools from primary through secondary grades offer quality education

This villa offers spacious living areas and excellent finishing throughout the villa. Large lounge downstairs and TV room and pantry upstairs with all 3 en-suite bedrooms. Fully equipped kitchen with a store, maids room and laundry area.

#### Unit Features:

- BUA 3,527Sq Ft
- 3 en-suite bedrooms
- Built-in wardrobes
- Central A/C
- Ceramic tiles
- Fitted washing machine with hot and cold lines in separate laundry area
- Laundry room with fitted washing machine with hot & cold lines
- Light fittings
- Maids room with attached bath
- One powder room for the guests
- Store room
- Terrace
- Two covered parking
- Fully equipped kitchen with storage area
  - o Large Fridge/freezer
  - o Stove/oven

#### Community Amenities

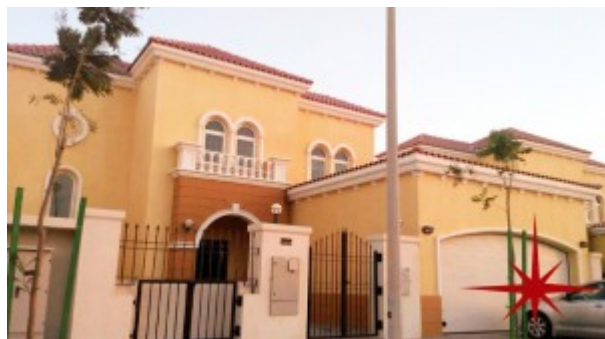
- 24/7 Security
- Bank
- Children's play area outside
- Coffee shops
- Day care center
- Firefighting system
- Pets allowed
- Post office
- Restaurants
- Shopping center including large Spinneys
- Visitors parking

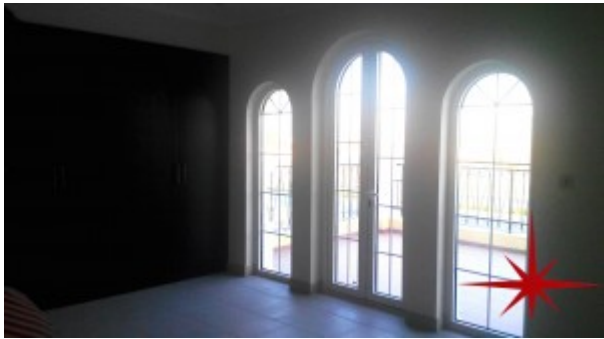
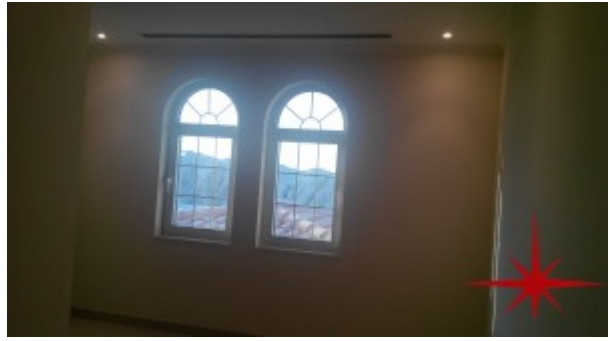
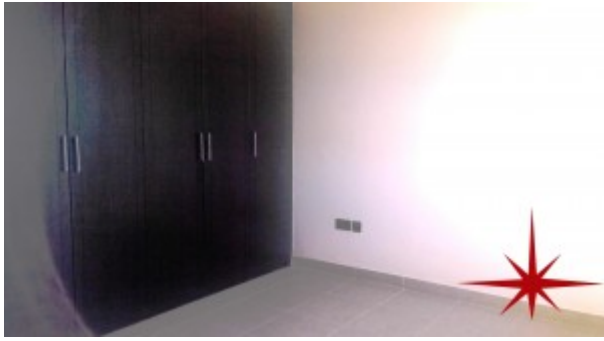
**Please call us for exclusive viewing**

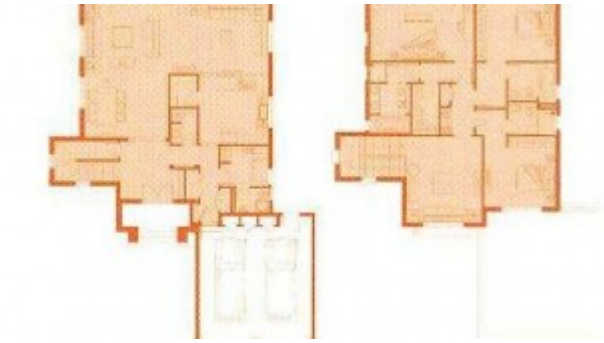
**056-2054400/04-3518133**

**Permit No. 4742**

## Property Gallery







## Property URL



http://chart.apis.google.com/chart?cht=qr&chs=250x250&chld=H|0&chl=https%3A%2F%2Fcapellaproperty

<https://capellaproperties.ae/property/jumeirah-park-legacy-large-gorgeous-3-en-suite-br-villa/>