

# JLT, Shell And Core Office on Mid Level Floor with Lake / Community Views, JBC 3

**AED 84,000** - ID: I-L-C-JLT-IA-1113-04 - Jumeirah Business Centre Jumeirah Lake Towers - Office



**BUA 1,103Sq Ft, Shell and Core Office on Higher Floor with Comforting Lake / Community Views is available for lease, Jumeirah Business Centre 3#, Jumeirah Lake Tower#**

|                |                    |
|----------------|--------------------|
| Plot Size      | 1103 sq ft         |
| Living Area    | 1103 sq ft         |
| Parking        | 1                  |
| Available From | 1-Dec-13           |
| Half Bath      | 1                  |
| Price/Area     | 76 sq ft           |
| Posting Date   | 01/12/2013         |
| View           | Lake and Community |

Jumeirah Business Centre 3 (JBC 3) is located at the entrance of the Community. This 39 stories commercial tower has some of the best views in the Jumeirah Lake Towers Community Including two world-class golf courses, the Montgomerie and Emirates. Some of Dubai's most iconic landmarks, such as Burj Al Arab and Palm Jumeirah are in the vicinity. Easy accessible due to Dubai's metro provides short hassle-free commutes to Dubai International Airport among other major business hubs

The tower has been designed with convenience in mind including a state of the art gymnasium and an exotic health spa

This offices can be customized according to your requirements!

JLT is surrounded by four calming artificial lakes, landscaped gardens and meandering waterways, spread over two hundred hectares of land. Conveniently located along main Sheikh Zayed Road, JLT is easily assessable by two Metro stations – Dubai Marina and JLT – Jumeirah Lake Towers is a large development consisting of seventy-nine towers with both residential and commercial projects

JLT is a free-zone as well as a free-hold, an ideal place for living, working, shopping and dining with five children playgrounds, and other facilities complementing the high-life Dubai living  
JLT embraces and nurtures both business and community living

**Unit features:**

- Shell & core unit
- 1 allocated parking
- Built-in kitchenette
- Built-in wash room

**Community Features:**

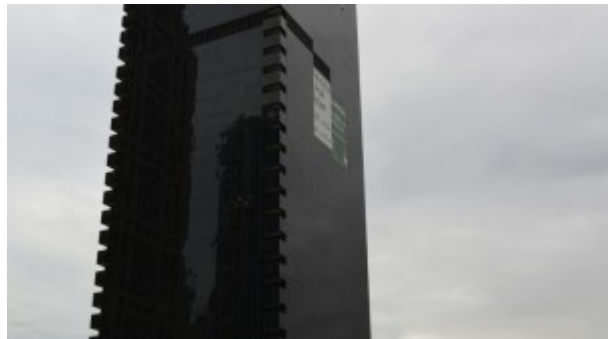
- 24/7 security
- Central A/C
- Coffee shop
- Common washroom
- Firefighting system
- Gymnasium
- Licensed restaurant
- Maintenance
- Prayers services
- Visitors parking

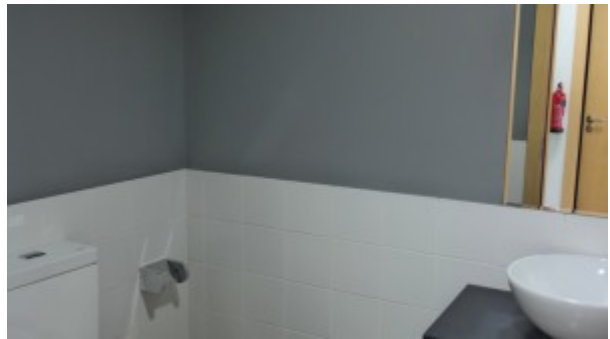
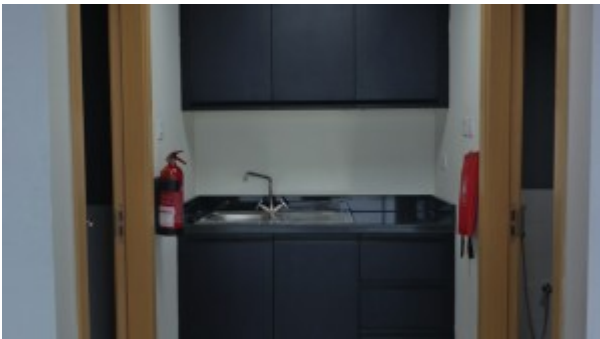
**Please call us for exclusive viewing**

**056-2054400/04-3518133**

**Permit No. 4742**

## **Property Gallery**





## Property URL



<https://capellaproperties.ae/property/jlt-shell-core-office-on-mid-level-floor-with-lake-community-views-jbc-3/>