

# JLT – Shell & Core Office on Higher Floor with Panoramic Views – JBC 4

Property is sold - ID: I-S-C-JLT-IA-1113-06 - Jumeirah Business Centre Jumeirah Lake Towers - Office



Plot Size	2465 sq ft
Living Area	2465 sq ft
Parking	1
Available From	1-Dec-13
Half Bath	2
Price/Area	1250 sq ft
Posting Date	01/12/2013
View	Lake, Jumeirah Island & Community

**Shell & Core office on Higher Floor with Panoramic 360 Views of Sea, Lake, Jumeirah Island & Community, Covered area 2,465 – JBC 4# JLT# Jumeirah Lake Towers#**

Jumeirah Business Centre 4 (JBC 4) with its impressive 5 floor atrium lobby is conveniently located close to other key business clusters as well as two metro stations

With easy access to Sheikh Zayed road linking Dubai to Abu Dhabi and with other key business hubs in close proximity JBC 4 is an ideal choice to open your business in Dubai

Overlooking the Jumeirah Village residential community, the 39 stories JBC 4 offers a great environment to work-in

This offices can be customized according to your requirements!

JLT is surrounded by four calming artificial lakes, landscaped gardens and meandering waterways, spread over two hundred hectares of land. Conveniently located along main Sheikh Zayed Road, JLT is easily assessable by virtue of two Metro stations – Dubai Marina and JLT – Jumeirah Lake Towers is a large development consisting of seventy nine towers with both residential and commercial projects

JLT is a free-zone as well as a free-hold, an ideal place for living, working, shopping and dining with five children playgrounds, and other facilities complementing the high-life Dubai living  
JLT embraces and nurtures both business and community living

**Unit features:**

- Balcony
- 1 parking
- Built-in Kitchenette
- 2 washrooms

**Community features:**

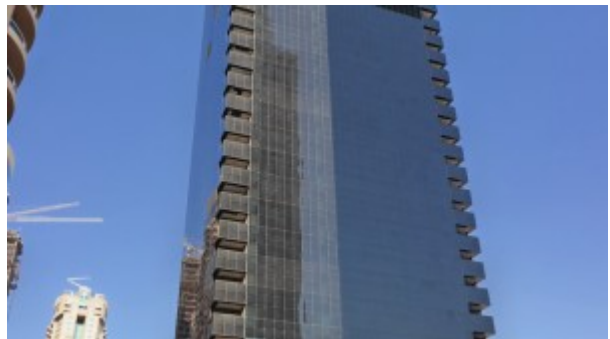
- 24/7 security
- Central A/C
- Firefighting System
- Maintenance
- Prayers services
- Visitors parking

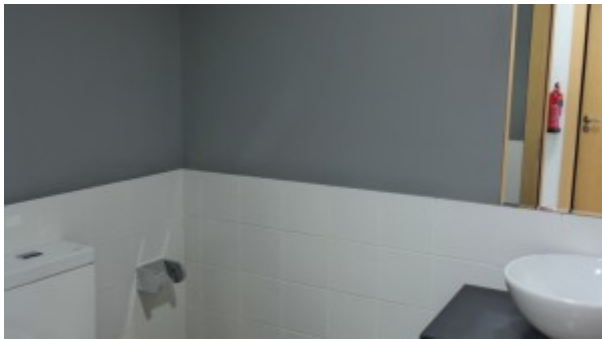
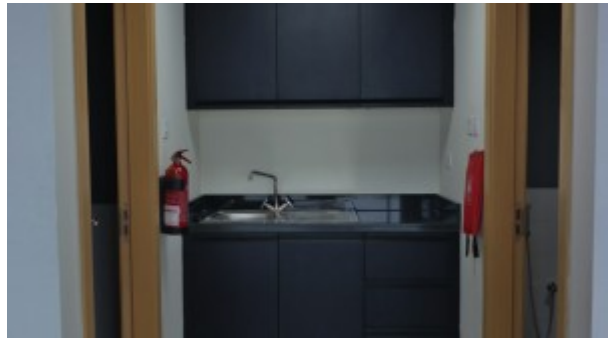
**Please call us for exclusive viewing**

**056-2054400/04-3518133**

**Permit No. 4742**

## **Property Gallery**





## Property URL



<https://capellaproperties.ae/property/jlt-shell-core-office-on-higher-floor-with-panoramic-views-jbc-4/>