

# JLT, Saba Tower 2, Fully Furnished 2 BR Duplex with Stunning View

Property is sold - ID: I-S-R-JLT-HK-1215-01 - Jumeirah Lake Towers Saba Tower - Apartment



Bedrooms	2
Bathrooms	3
Plot Size	1567 sq ft
Living Area	1567 sq ft
Parking	2
Available From	9-Dec-2015
Ensuite	2
Furnished	Fully Furnished
Half Bath	1
Price/Area	1269 sq ft
Posting Date	09/12/2015
View	Marina Tram and SZR

## BUA 1,567Sq Ft, JLT, Saba Tower 2,Fully Furnished2 BR Duplex with Stunning View

For detailed virtual tours of properties in Dubai, visit [www.capellaproperties.ae](http://www.capellaproperties.ae)  
capella properties, Redefining Real Estate in Dubai UAE

JLT is surrounded by four calming artificial lakes, landscaped gardens and meandering waterways, spread over two hundred hectares of land. Conveniently located along main Sheikh Zayed Road, JLT is easily assessable by virtue of two Metro stations – Dubai Marina and JLT – Jumeirah Lake Towers is a large development consisting of seventy nine towers with both residential and commercial projects

JLT is a free-zone as well as a free-hold, an ideal place for living, working, shopping and dining with five children playgrounds, and other facilities complementing the high-life Dubai living  
JLT embraces and nurtures both business and community living. Saba Towers, which are Saba Tower 2 and Saba Tower 3, are two identical high-rise towers being developed in the Jumeirah Lake Towers development. Saba Towers are each 36-storey residential towers with over 700 freehold

apartments from studios to 5 bedroom penthouses

### Unit features:

- BUA 1,567Sq Ft
- Built-in Wardrobes

- Built in Kitchenette
  - o Fridge
  - o Microwave
  - o Washing machine
  - o Oven
- Ceramic Tiles
- Light fittings

**Community features:**

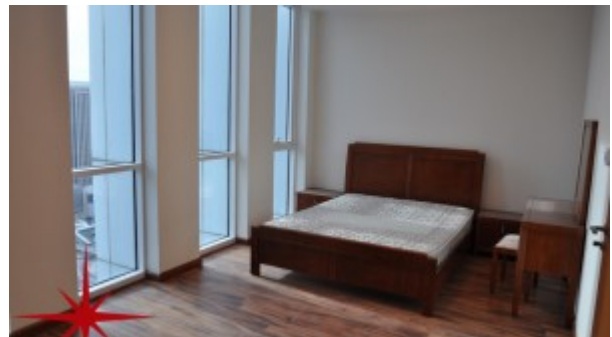
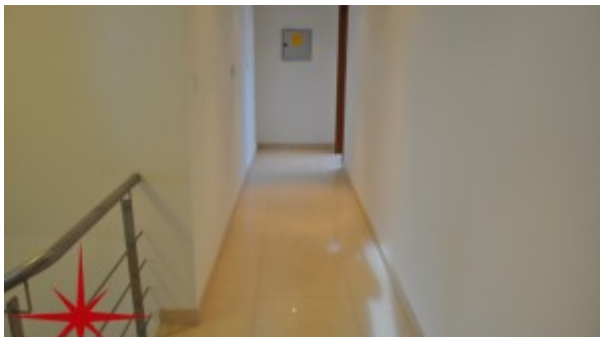
- 24/7 Security
- Central A/C
- Children's swimming pool
- Children's play area inside
- Firefighting system
- Fitness club
- Gymnasium
- Licensed restaurant
- Maintenance
- Swimming pool
- Visitors parking

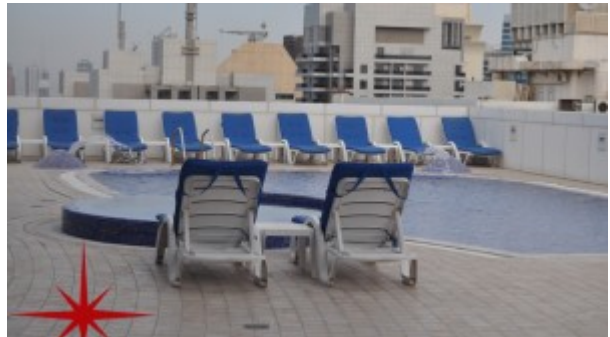
**Please call us for exclusive viewing**

**056-2054400/04-3518133**

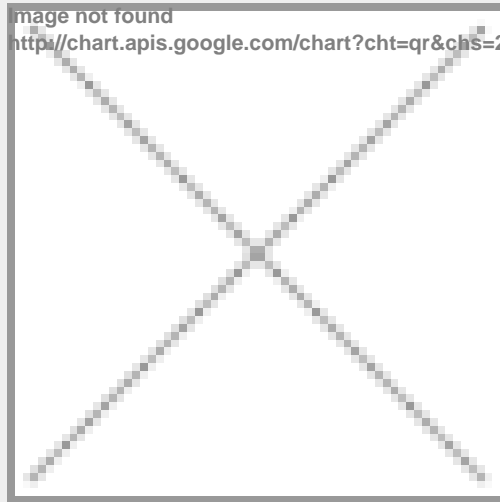
**Permit No. 4742**

## Property Gallery





## Property URL



<https://capellaproperties.ae/property/jlt-saba-tower-2-fully-furnished-2-br-duplex-with-stunning-view/>