

# JLT, SabaTower 3, 3 BR Penthouse with Maids Rooms and Marina View

Property is sold - ID: I-S-R-JLT-HK-1215-04 - Jumeirah Lake Towers Saba Tower - Apartment



Bedrooms	3
Bathrooms	4
Plot Size	3593 sq ft
Living Area	3593 sq ft
Parking	2
Available From	10-Dec-2015
Ensuite	3
Half Bath	1
Maid Room	1
Maids Bath	1
Price/Area	1363 sq ft
Posting Date	10/12/2015
View	Marina Tram and SZR

BUA 3,593Sq Ft, JLT, SabaTower 3, 3 BR Penthouse with Maids Rooms and Marina View

For detailed virtual tours of properties in Dubai, visit [www.capellaproperties.ae](http://www.capellaproperties.ae)  
capella properties, Redefining Real Estate in Dubai UAE

JLT is surrounded by four calming artificial lakes, landscaped gardens and meandering waterways, spread over two hundred hectares of land. Conveniently located along main Sheikh Zayed Road, JLT is easily assessable by virtue of two Metro stations, Damac Metro Station and JLT Metro Station. Jumeirah Lake Towers is a large development consisting of seventy nine towers with both residential and commercial projects

JLT is a free-zone as well as a free-hold, an ideal place for living, working, shopping and dining with five children playgrounds, and other facilities complementing the high-life Dubai living

JLT embraces and nurtures both business and community living. Saba Towers, which are Saba Tower 2 and Saba Tower 3, are two identical high-rise towers being developed in the Jumeirah Lake Towers development. Saba Towers are each 36-storey residential towers with over 700 freehold apartments from studios to 5 bedroom penthouses

## Unit features:

- BUA 3,593Sq Ft

- Balcony
- Built-in Wardrobes
- Ceramic Tiles
- Light fittings

**Community features:**

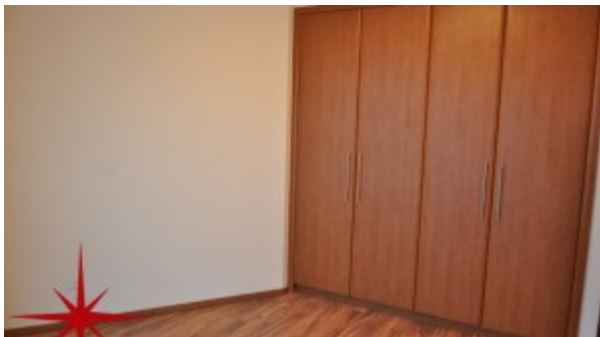
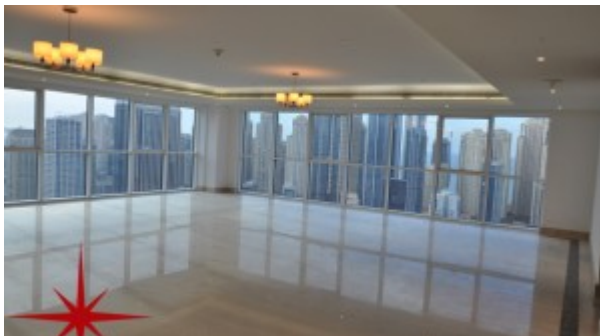
- 24/7 Security
- Central A/C
- Children's swimming pool
- Children's play area inside
- Common washroom
- Firefighting system
- Fitness club
- Gymnasium
- Licensed restaurant
- Maintenance
- Swimming pool
- Visitors parking

**Please call us for exclusive viewing**

**056-2054400/04-3518133**

**Permit No. 4742**

## Property Gallery





## Property URL



http://chart.apis.google.com/chart?cht=qr&chs=250x250&chld=H|0&chl=https%3A%2F%2Fcapellaproperty

<https://capellaproperties.ae/property/jlt-saba-tower-2-fully-furnished-2-br-duplex-with-stunning-view-2-2-2/>