

Fully Fitted Open Plan Office in Tiffany Towers

Property is sold - ID: I-S-C-JLT-OF-0615-03 - Jumeirah Lake Towers Tiffany Tower - Office



BUA 1,181Sq Ft JLT, Fully Fitted Open Plan Office in Tiffany Towers

Living Area	1182 sq ft
Parking	1
Available From	16-Jun-2015
Half Bath	1
Price/Area	1225 sq ft
Posting Date	16/06/2015
View	Lake

For detailed virtual tours of properties in Dubai, visit www.capellaproperties.ae

Tiffany towers is located in Cluster W of Jumeirah Lake towers, one of the busiest clusters with easy access to public transport including the metro. The tower is maintained immaculately and was developed by Nakheel – ensuring the high quality of the building.

JLT is surrounded by four calming artificial lakes, landscaped gardens and meandering waterways, spread over two hundred hectares of land. Conveniently located along main Sheikh Zayed Road, JLT is easily assessable by virtue of two

Metro stations – Dubai Marina and JLT – Jumeirah Lake Towers is a large development consisting of seventy nine towers with both residential and commercial projects

JLT is a free-zone as well as a free-hold, an ideal place for living, working, shopping and dining with five children playgrounds, and other facilities complementing the high-life Dubai living

JLT embraces and nurtures both business and community living.

Unit features:

- 1 washroom
- 1 parking space
- BUA 1,181Sq Ft
- Built-in kitchenette
- Partition
- Private washroom

- Wooden flooring

Community features:

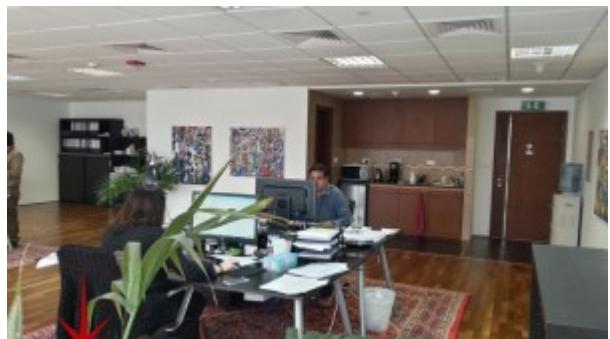
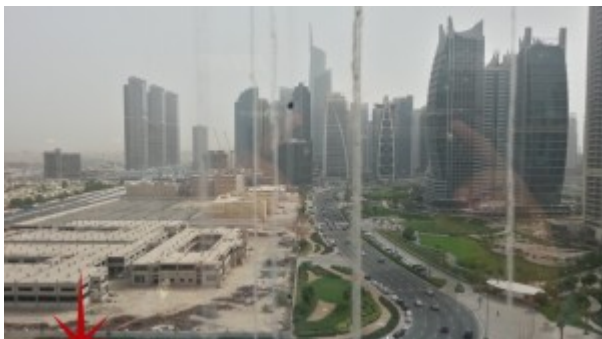
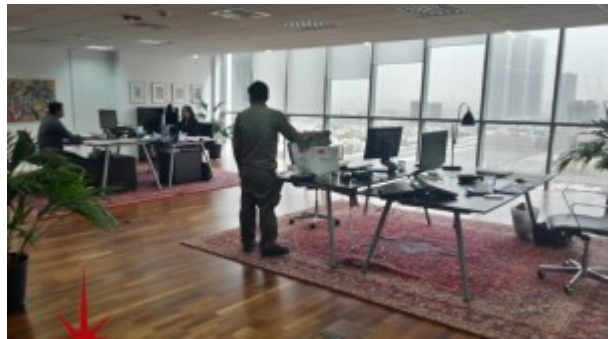
- 24/7 Security
- Central A/C
- Coffee shop
- Firefighting system
- Maintenance
- Prayers services
- Visitors parking

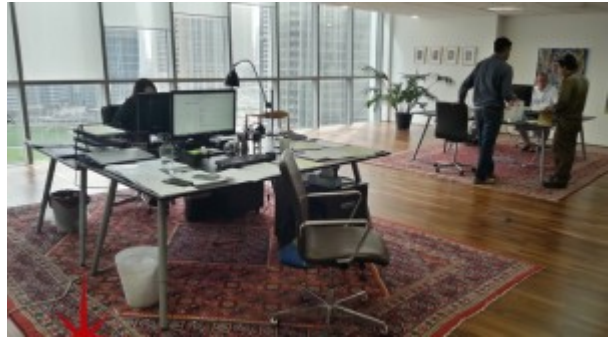
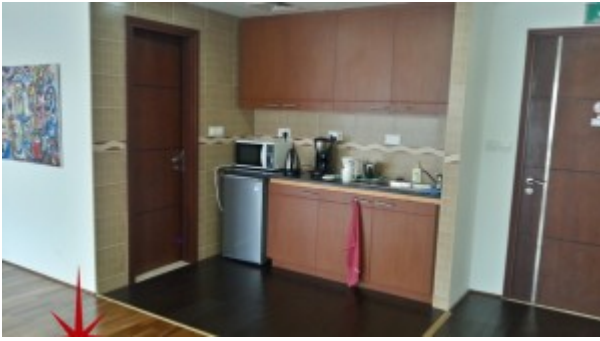
Please call us for exclusive viewing

056-2054400/04-3518133

Permit No. 4742

Property Gallery





Property URL



<https://capellaproperties.ae/property/jlt-fully-fitted-office-with-partition-available-for-sale-i-s-c-jlt-of-0615-03/>