

# JLT, Fully Fitted Office near Metro Station on a Higher Floor with Sheikh Zayed Road View

Property is rented - ID: I/L/C/JLT/SZ/0514/02 - HDS Tower Jumeirah Lake Towers - Office



Bathrooms	2
Living Area	1089 sq ft
Parking	1
Available From	04-Jun-14
Furnished	Fully furnished, with glass partitions and conference room
Price/Area	101 sq ft
Posting Date	04/06/2014
View	Sheikh Zayed Road

**BUA 1,089 Sq Ft, This unit is fully furnished and fitted with glass partitions and conference room, with conference table etc.**

This 39-storey commercial and retail project in the Jumeirah Lakes Towers was successfully delivered in 2008. All the office units are intricately designed. The interiors feature the finest finishes. They also provide captivating views of Lakes, Emirates Living, and the Shaikh Zayed Road

The fine touches are not just confined to the design and finishes. The technological functionality is evident with the provision of high-speed internet connectivity, Wi-Fi Hotspots and hi-tech intelligent building management systems. This ensures all tenants operating their businesses in solitude, 24 hours a day and seven days a week

The Tower also features solar reflective loading, passive and active shading devices together with innovative fabric materials. The tower is being built in compliance with structural standards such as the Uniform Building Code, International Building Code, The International Design Standards and as per the requirements of the National Fire Protection Agency

For detailed virtual tours of properties in Dubai, visit  
[www.capellaproperties.ae](http://www.capellaproperties.ae)

Unit Features:

- BUA 1,089Sq Ft

- Ceramic tiles
- Fully furnished, with glass partitions and conference room
- Light fittings

**Community Features:**

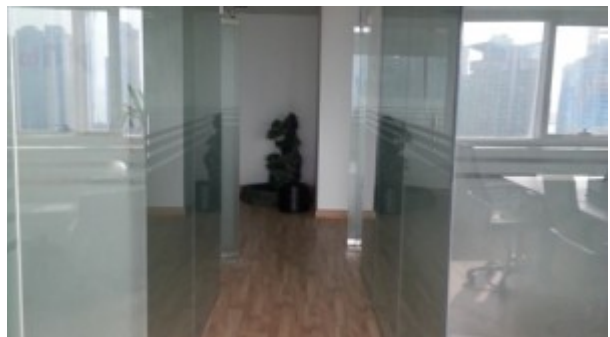
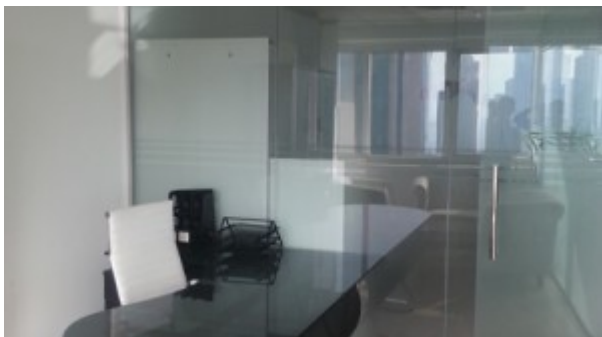
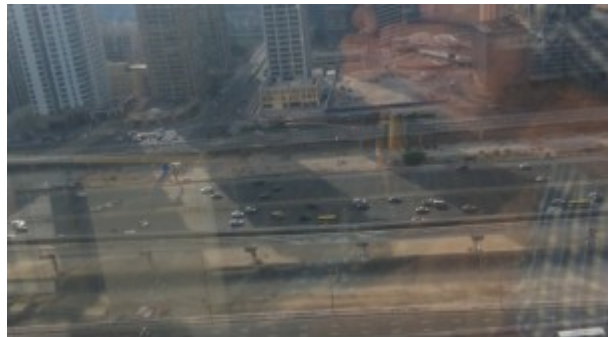
- 24/7 Security
- Central A/C
- Coffee shop
- Community center
- Common washroom
- Dedicated basement parking for 1 vehicle
- Firefighting system
- Fitness club
- Maintenance
- Prayers services
- Visitors Parking

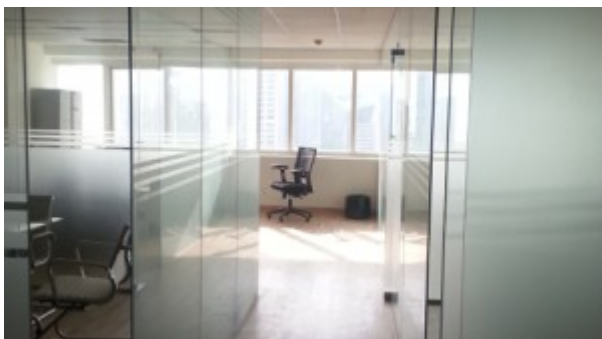
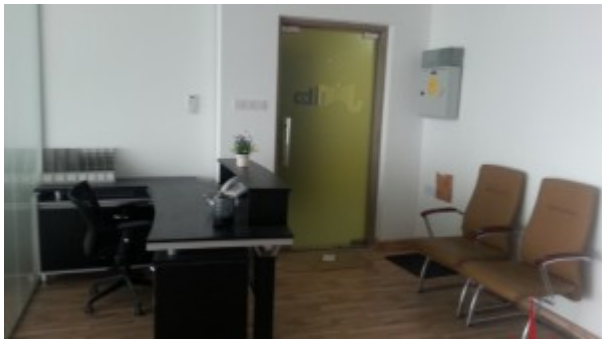
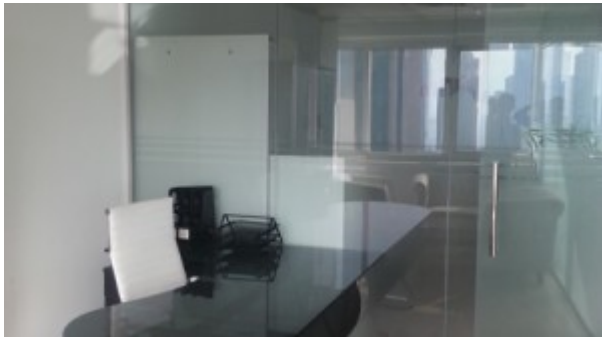
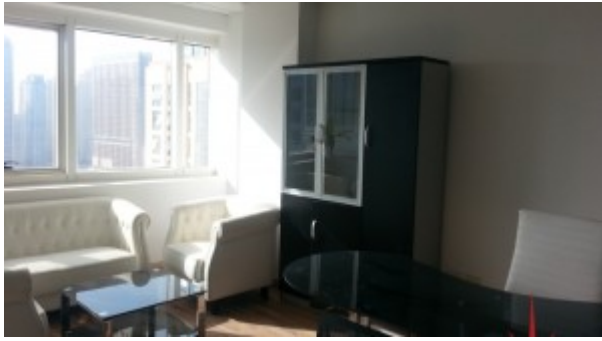
**Please call us for exclusive viewing**

**056-2054400/04-3518133**

**Permit No. 4742**

## **Property Gallery**





## Property URL



<https://capellaproperties.ae/property/jlt-fully-fitted-office-near-metro-station-on-a-higher-floor-with-sheikh-zayed-road-view/>