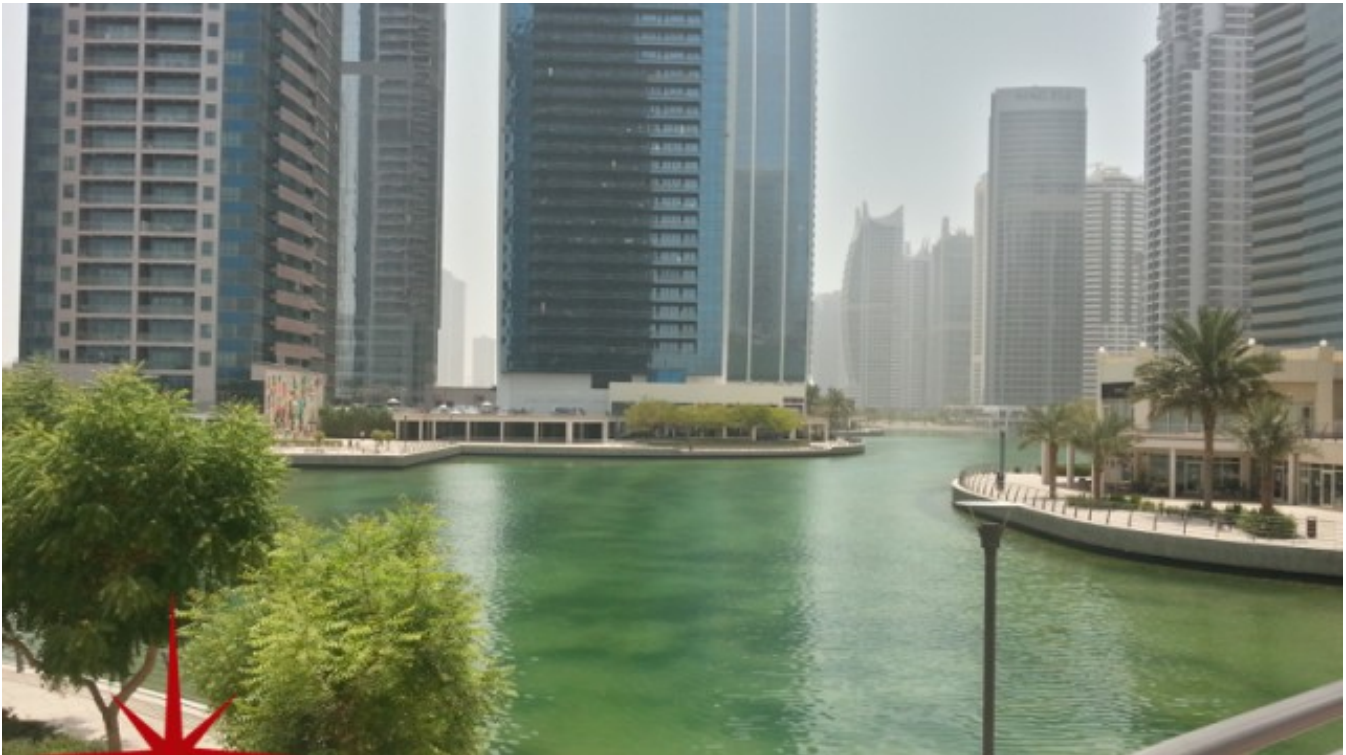


JLT, Fully Fitted Office in X 2 Tower with Great Views Available for Lease

Property is rented - ID: I-L-C-JLT-OF-0715-01 - Jumeirah Bay X2 Jumeirah Lake Towers - Office



Bathrooms	1
Living Area	1021 sq ft
Parking	1
Available From	1-Aug-15
Price/Area	95 sq ft
Posting Date	01/08/2015
View	Golf Course

BUA 1,021Sq Ft JLT, fully fitted office in X-2 Tower with Great Views Available for Lease

For detailed virtual tours of properties in Dubai, visit www.capellaproperties.ae

X-2 Tower is located in Cluster X of Jumeirah Lake towers, busy cluster with easy access to public transport including the metro. The tower is maintained immaculately.

JLT is surrounded by four calming artificial lakes, landscaped gardens and meandering waterways, spread over two hundred hectares of land. Conveniently located along main Sheikh Zayed Road, JLT is easily assessable by virtue of two

Metro stations – Dubai Marina and JLT – Jumeirah Lake Towers is a large development consisting of seventy nine towers with both residential and commercial projects

JLT is a free-zone as well as a free-hold, an ideal place for living, working, shopping and dining with five children playgrounds, and other facilities complementing the high-life Dubai living

JLT embraces and nurtures both business and community living.

Unit features:

- 1 parking space
- BUA 1,021Sq Ft
- Built-in kitchenette
- Private washroom

- Wooden flooring

Community features:

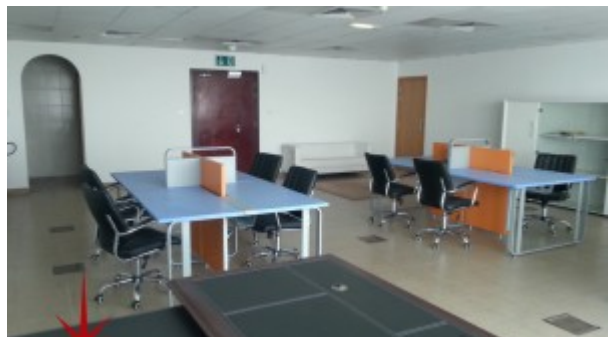
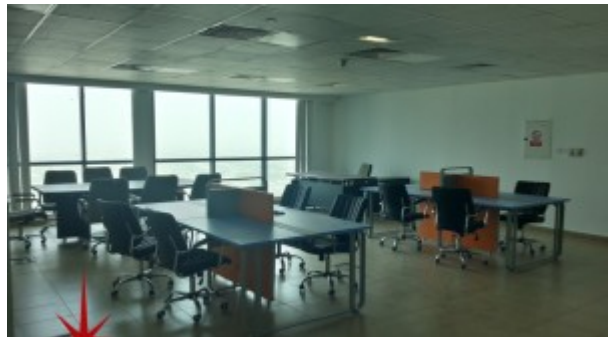
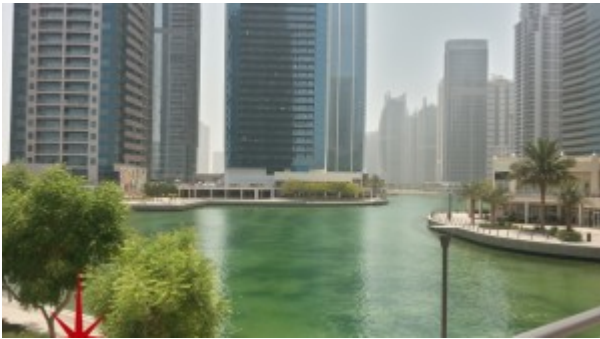
- 24/7 Security
- Central A/C
- Coffee shop
- Firefighting system
- Maintenance
- Prayers services
- Visitors parking

Please call us for exclusive viewing

056-2054400/04-3518133

Permit No. 4742

Property Gallery





Property URL



image not found
<http://chart.apis.google.com/chart?cht=qr&chs=250x250&chld=H|0&chl=https%3A%2F%2Fcapellaproperty>

<https://capellaproperties.ae/property/jlt-fully-fitted-office-in-x-2-tower-with-great-views-available-for-lease-i-l-c-jlt-of-0715-01/>