

JLT – Shell And Core Office at Lower Level in JBC 4 with Lake View

AED 82,056 - ID: I-L-C-JLT-IA-1213-05 - Jumeirah Business Centre Jumeirah Lake Towers - Office



Bathrooms	1
Plot Size	1052 sq ft
Living Area	1052 sq ft
Parking	1
Available From	17-Dec-13
Price/Area	78 sq ft
Posting Date	17/12/2013
View	Lake/Sheikh Zayed Road

BUA 1,052Sq Ft Shell and Core Office with Lake and Sheikh Zayed Road View in #JBC 4#JLT#Jumeirah Lake Towers

Jumeirah Business Centre 4 (JBC 4) with its impressive 5-floor atrium lobby is conveniently located close to other key business clusters as well as two metro stations

With easy access to Sheikh Zayed road linking Dubai to Abu Dhabi and with other key business hubs in close proximity JBC 4 is an ideal choice to open your business in Dubai

Overlooking the Jumeirah Village residential community, the 39 stories JBC 4 offers a great environment to work in

JLT is surrounded by four calming artificial lakes, landscaped gardens and meandering waterways, spread over two hundred hectares of land. Conveniently located along main Sheikh Zayed Road, JLT is easily assessable by virtue of two Metro stations – Dubai Marina and JLT – Jumeirah Lake Towers is a large development consisting of seventy-nine towers with both residential and commercial projects

JLT is a free-zone as well as a freehold, an ideal place for living, working, shopping and dining with five children playgrounds, and other facilities complementing the high-life Dubai living

JLT embraces and nurtures both business and community living

Unit Features:

- Built-in Kitchenettes

- Ceramic Tiles
- Light fittings
- 1 parking
- 1 washroom

Community Features:

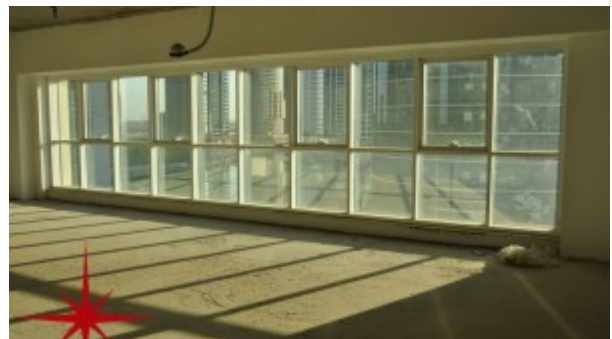
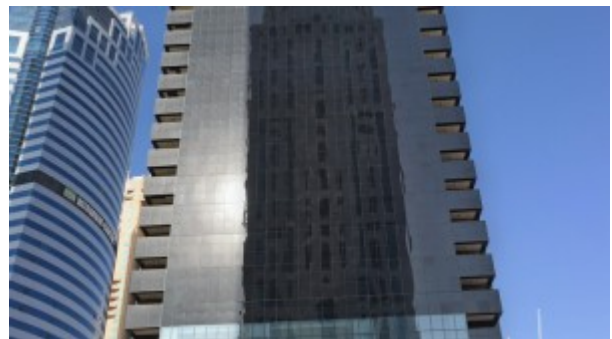
- 24/7 security
- Central A/C
- Common washroom
- Firefighting System
- Maintenance
- Prayers services
- Visitors parking

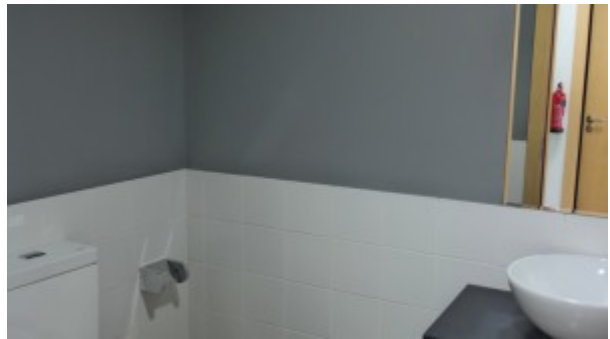
Please call us for an exclusive viewing

056-2054400/04-3518133

Permit No. 4742

Property Gallery





SAMSUNG CSC

Property URL



<https://capellaproperties.ae/property/jlt-fitted-office-at-lower-level-in-jbc-4-with-lake-view/>