

JBR – Large 2 En-suite BR apt with Full Marina & Partial Sea View

Property is sold - ID: I/S/R/JBR/NN/0114/01 - Bahar Jumeirah Beach Residence - Apartment



For detailed virtual tours of properties in Dubai, visit www.capellaproperties.ae

Bedrooms	2
Bathrooms	3
Living Area	1300 sq ft
Parking	1
Available From	25-Jan-14
Ensuite	2
Half Bath	1
Price/Area	2076 sq ft
Posting Date	24/01/2014
View	Full Marina & Partial Sea View

This gorgeous two bedroom unit is located on a higher floor in Bahar 1, with absolutely magnificent view of The Marina and has partial Sea View. It has two large en-suite bedrooms, living/dining room, and powder room for the guests, a balcony and a kitchen with beautiful cabinetry

Bahar 1, is one of the towers among the six building clusters within the (JBR) Jumeirah Beach Residence Development and comprises of 1,2,3 and 4 bedroom apartments of different layouts to cater to various budgets and preferences. It is modern designed from building façade, interior finishing and furnishings. It's the perfect Marina address with beach just at a walking distance and the leisure hubs surrounding you would satisfy your culinary cravings and retail needs, although the highlight of living in the Dubai Marina district is the quiet prestigious neighborhood and the relaxing atmosphere

Jumeirah Beach Residence (JBR) is a 1.7 kilometers long, 2 square kilometers gross floor area waterfront community located against the Persian Gulf Marina, United Arab Emirates. It is the largest single phase residential development in the world and contains 40 towers (35 are residential and 5 are hotels).

JBR can accommodate about 15,000 people, living in its apartments and hotel rooms. The Project has 6,917 apartments. The developer, Dubai Properties (a subsidiary of Dubai Holdings), launched JBR in August 2002, this AED 6 billion project was completed in 2007.

"The Walk at JBR" restaurant and shopping strip, which is adjacent to the beach behind JBR, is a very popular location for Al Fresco Dining (Outdoors dining).

There are five hotels, rated as 5 star or 4 star, four of which are purpose-built hotels, while one is a converted residential tower.

Unit features:

- Balcony
- BUA 1,300Sq Ft
- Built-in wardrobes
- Ceramic tiles
- Kitchen with beautiful cabinetry – Fridge/Freezer, Electric – Stove/Oven
- Light fittings
- Powder room for the guests
- Two en-suite bedrooms

Community features:

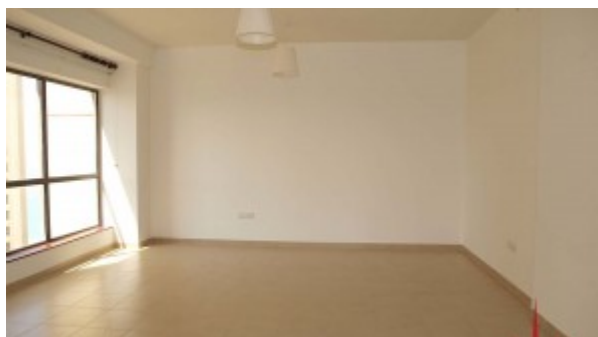
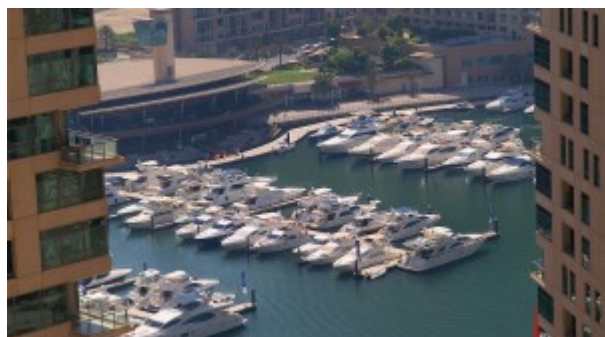
- 24/7 security
- Central A/C
- Firefighting system
- Gymnasium
- Licensed restaurants
- Maintenance
- Prayers services
- Pets Allowed
- Property management
- Swimming pool
- Tennis court
- Visitors parking

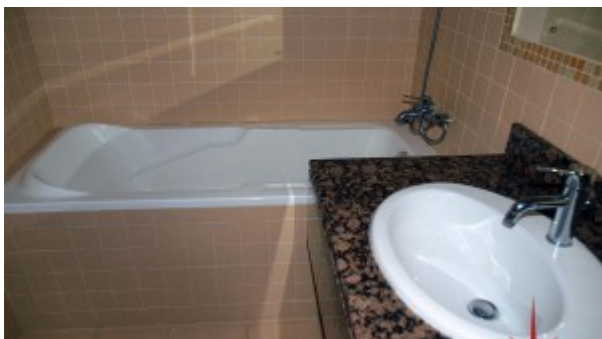
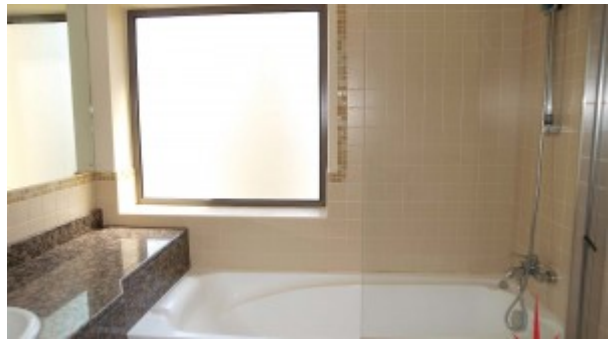
Please call us for exclusive viewing

056-2054400/04-3518133

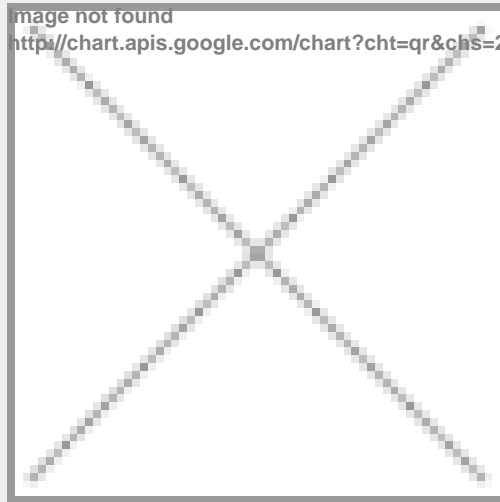
Permit No. 4742

Property Gallery





Property URL



http://chart.apis.google.com/chart?cht=qr&chs=250x250&chld=H|0&chl=https%3A%2F%2Fcapellaproperty

<https://capellaproperties.ae/property/jbr-large-2-en-suite-br-apt-with-full-marina-partial-sea-view/>