

Immerse in the Paradise – 3 BR Townhouse With Garden View – No Commission

AED 2,325,000 - ID: SR-JGE-HB-0218-05 - Jumeirah Golf Estate Jumeirah Golf Estates - Townhouse



BUA 2,012 SqFt, Jumeirah Golf Estate, 3 BR Premium Townhouse delivered in 2019

Bedrooms	3
Bathrooms	3
Plot Size	1911 sq ft
Living Area	2012 sq ft
Parking	2
Built in	Q4 2019
Available From	14-Feb-2018
Ensuite	1
Furnished	No
Half Bath	1
Price/Area	1155 sq ft
Posting Date	14/02/2018
Store	1
View	Community Gardens

For detailed virtual tours of properties in Dubai, visit www.capellaproperties.ae
capella properties, Redefining Real Estates in Dubai UAE

The Master Community – Jumeirah Golf Estate is a contemporary golf enthusiast dream come true, offering luxury homes and leisure facilities amidst two internationally-acclaimed golf courses Fire and Earth creating an unmatched lifestyle experience in the heart of **new Dubai**.

Set across 1,119 hectares of lush green landscape, the development is an unrivalled destination offering attractive opportunities and world-class amenities, offering stunning golf course views of 4 champion courses, 6 hectares of open space, 2 clubhouses, extraordinary foliage, five water features, boutique hotel, 5 Andalusian inspired heritage sites, retail shops and restaurants and 2 swimming pool.

Jumeirah Luxury is an exclusive and contemporary residential project made up of 291 attached villas and townhouses. It is a striking new residential development infused with the beauty of nature, the spectacular surroundings will become an integral part of your everyday lifestyle. Expertly designed homes, ranging from three to five bedrooms, are built directly on the Fire Course

Thoughtfully designed with couples and families in mind, the townhouse features a delightful garden and pool. The spacious

interior leads outside via a connected deck and you have direct access to the stunning commercial gardens, with children's play areas, outdoor games, and water features, with views on the golf course.

A new metro line will pass through this community, making it even more convenient to commute.

Payment Plan:

- **50% During Construction and 50% upon Handover (Q4-2019)**

Remaining 50% on delivery of the project (Q4 2019)

Unit Features:

- BUA 2012 SqFt
- 2 allocated parking space
- 3 En-suite Bedroom
- 1 Guest Toilet
- Built-In Wardrobes
- Swimming Pool with Pool Deck
- 2 balconies

Community Features:

- 2 Golf Courses
- 24/7 Security
- 1 clubhouse
- Restaurants
- Coffee Shop
- Bar/Lounge
- Children's play area inside /outside
- Fitness club
- 5-star sports and leisure activities
- Central A/C
- Firefighting system
- Maintenance
- Prayers services

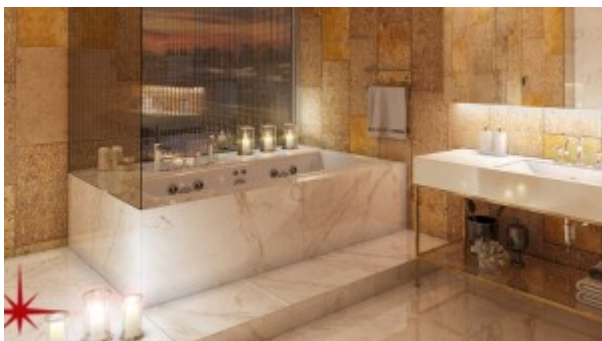
Please call us for exclusive viewing

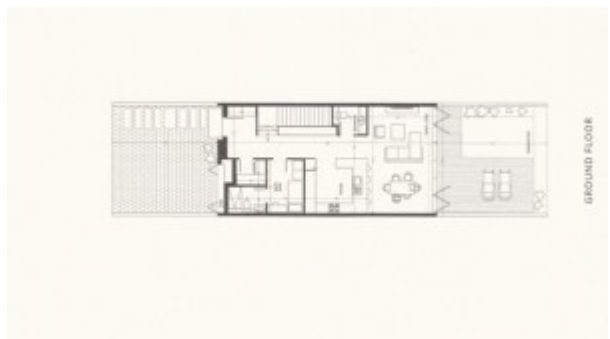
056-2054400/04-3518133

Permit No. 18285

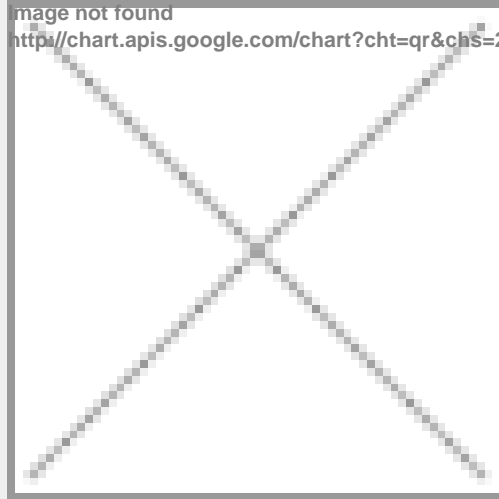
Property Gallery







Property URL



<https://capellaproperties.ae/property/immerse-in-the-paradise-garden-view-sr-jge-hb-0218-05/>