

LAKE VIEW | NO COMMISION | SMART HOME

AED 3,250,000 - ID: SR-JGE-HB-0218-04 - Fire Jumeirah Golf Estate Jumeirah Golf Estates - Townhouse



Bedrooms	4
Bathrooms	4
Plot Size	1911 sq ft
Living Area	3414 sq ft
Terrace	1 sq ft
Parking	2
Built in	Q4 2019
Available From	14-Feb-2018
Ensuite	3
Furnished	No
Half Bath	1
Maid Room	1
Maid's Bath	1
Price/Area	952 sq ft
Posting Date	14/02/2018
Store	1
View	Golf Course

BUA 3,414 SqFt, Jumeirah Golf Estate, 4 BR Premium Townhouse delivered in 2019

For detailed virtual tours of properties in Dubai, visit www.capellaproperties.ae
capella properties, Redefining Real Estates in Dubai UAE

The Master Community – Jumeirah Golf Estate is a contemporary golf enthusiast dream come true, offering luxury homes and leisure facilities amidst two internationally-acclaimed golf courses Fire and Earth creating an unmatched lifestyle experience in the heart of **new Dubai**.

Set across 1,119 hectares of lush green landscape, the development is an unrivalled destination offering attractive opportunities and world-class amenities, offering stunning golf course views of 4 champion courses, 6 hectares of open space, 2 clubhouses, extraordinary foliage, five water features, boutique hotel, 5 Andalusian inspired heritage sites, retail shops and restaurants and 2 swimming pool.

Jumeirah Luxury is an exclusive and contemporary residential project made up of 291 attached villas and townhouses. It is a striking new residential development infused with the beauty of nature, the spectacular surroundings will become an integral part of your everyday lifestyle. Expertly designed homes, ranging from three to five bedrooms, are built directly on the Fire Course

This townhouse features a large private garden with pool deck and lush plant life, as well as full views of golf course and lake from the spacious first-floor terrace and roof garden. Direct access to the championship golf course and lake brings you even

closer to nature in these exceptional surroundings.

A new metro line will pass through this community, making it even more convenient to commute.

Payment Plan:

- **50% During Construction and 50% upon Handover (Q4-2019)**

1st – 5% on booking plus 4% for the Oqood

2nd – 5% May 2018

3rd – 5% August 2018

4th – 5% November 2018

5th – 5% February 2019

6th – 5% May 2019

7th – 10% August 2019

8th – 10% November 2019

Remaining 50% on delivery of the project(Q4 2019)

Unit Features:

- BUA 3414 SqFt
- 2 allocated parking space
- 2 En-suite Bedroom
- 1 Half Bathroom
- En-Suite Maid's Room
- 1 Guest Toilet
- Built-In Wardrobes
- Swimming Pool with Pool Deck
- 2 balconies
- Terrace
- Private Garden

Community Features:

- 2 Golf Courses
- 24/7 Security
- 1 clubhouse
- Restaurants
- Coffee Shop
- Bar/Lounge
- Children's play area inside /outside
- Fitness club
- 5-star sports and leisure activities
- Central A/C
- Firefighting system
- Maintenance

- Prayers services

Please call us for exclusive viewing

056-2054400/04-3518133

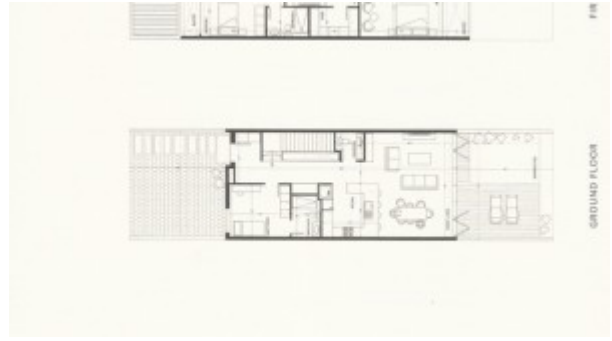
Permit No. 18285

Property Gallery









Property URL



<https://capellaproperties.ae/property/immerse-in-the-paradise-exquisite-golf-course-lake-view-sr-jge-hb-0218-04/>