

# 3 BR with 2 Balconies and 1 Terrace Facing Canal

AED 3,604,000 - ID: I-S-R-AJD-HK-0616-09 - Al Jaddaf Al Jaddaf - Apartment



## BUA 1,779 Sq Ft, Culture Village, 3 BR with Canal View Mins Away From Jaddaf Metro

Bedrooms	3
Bathrooms	4
Plot Size	2188 sq ft
Living Area	1779 sq ft
Parking	2
Built in	March 2017
Available From	20-July-2016
Price/Area	1647 sq ft
Posting Date	25/07/2016
View	Canal View

Payment Plan  
Booking 20%  
Delivery 80%

For detailed virtual tours of properties in Dubai, visit [www.capellaproperties.ae](http://www.capellaproperties.ae)  
capella properties, Redefining Real Estate in Dubai UAE

Dubai Creek is a saltwater creek that ends at Ras Al Khor Wildlife Sanctuary, a new development along the creek is Dubai Wharf.

Dubai wharf is a mixed used development set within the heart of the Dubai creek, opposite Al Jaddaf metro station making the access extremely easy to the residential complexes.

This multi-storey mixed-use development was conceived as a contemporary Arabesque town on the waterfront. Stretching along the banks of the creek, the development will become the heart of a destination primarily known for embracing culture, heritage and art through the modern architecture of its residences and the diversity of its retail offerings.

Residents can choose between studios, 1, 2 and 3 bedroom apartments. Visitors and residents alike can live and shop in modern luxury in a setting that pays homage to tradition. The wide walkway fronting directly onto the waters of Dubai Creek features a long series of boutiques—from international luxury brands to local flavors.

Adjacent to the Palazzo Versace Dubai which is an address to reckon with on Dubai creek along with scenic views of the

creek. This project is tied up with Sheikh Mohammad's wider plan for Dubai creek development, including Dubai creek golf club and Dubai opera.

**Unit features:**

- BUA 1,779Sq Ft
- Balcony 02
- Built-in Wardrobes
- Ceramic Tiles
- Light fittings
- Laundry Room
- Ironing Room
- Store room
- Terrace 01
- Walk-in Closet

**Community features:**

- 24/7 Security
- Central A/C
- Children's swimming pool
- Children's play area inside
- Coffee Shop
- Firefighting system
- Gymnasium
- Maintenance
- Pets allowed
- Swimming pool
- Visitors parking

**Please call us for exclusive viewing**

**056-2054400/04-3518133**

**Permit No. 18285**

## Property Gallery



SAMSUNG CSC



SAMSUNG CSC



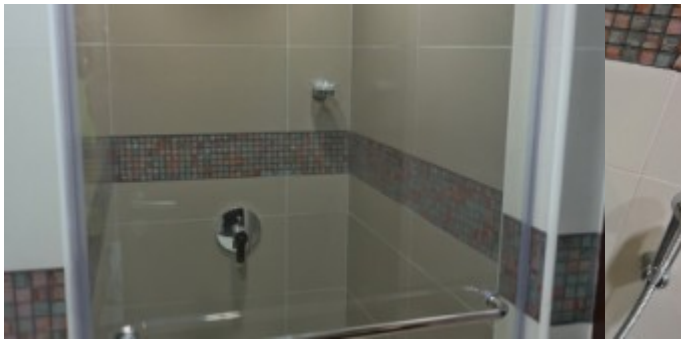
SAMSUNG CSC



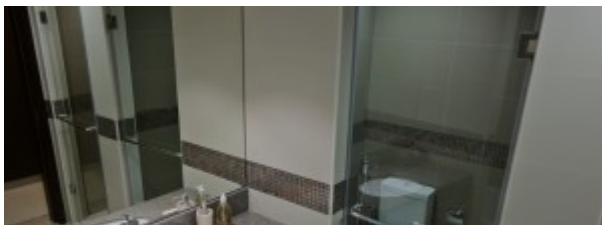
SAMSUNG CSC



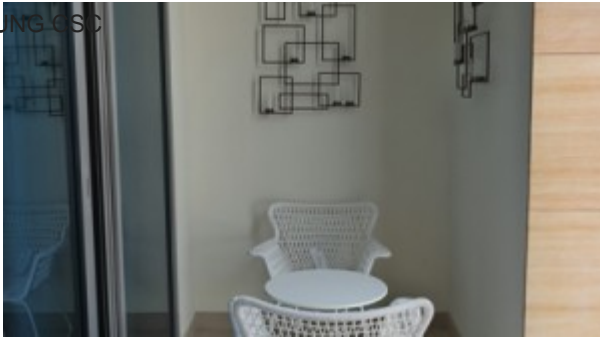
SAMSUNG CSC



SAMSUNG CSC



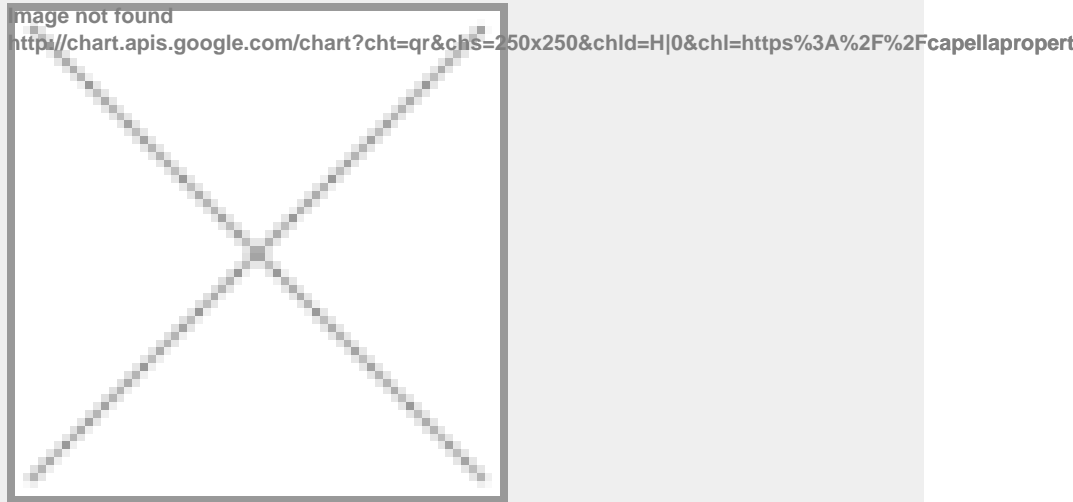
SAMSUNG CSC



SAMSUNG CSC



## Property URL



<https://capellaproperties.ae/property/i-s-r-ajd-hk-0616-09/>