

Fully Fitted Office with Glass and Wooden Partition

Property is rented - ID: I-L-C-DIN-OF-0216-03 - Dubai Internet City - Office



Plot Size	1184 sq ft
Living Area	1184 sq ft
Parking	2
Available From	13-Feb-2016
Price/Area	165 sq ft
Posting Date	13/02/2016
View	Palm, SZR, Burj UI Arab, arina, JLT, Golf Course

BUA 1,184 Sq Feet, Fully Fitted Office with Glass and Wooden Partition

For detailed virtual tours of properties in Dubai, visit www.capellaproperties.ae
capella properties, Redefining Real Estate in Dubai UAE

Glass partitioned office with wooden floors ready to move in office, customized to your need with private pantry. Dubai internet city is an information technology park created by the government of Dubai as a free economic zone and a strategic base for companies targeting regional emerging markets.

About 25 kilometers south of downtown Dubai city, on Sheikh Zayed Road between Dubai and Abu Dhabi. It is located adjacent to Dubai Marina, Jumeirah Beach Residence and the well-known Palm Jumeirah, areas which are rapidly becoming three of the most exclusive (and expensive) residential areas of Dubai. Dubai Internet City is less than 1 km from the sea coast and is near several five star hotel

Unit features:

- 2 Parking Spaces
- BUA 1,184 sq feet
- Property management
- Shared Toilet
- Pantry

Community features:

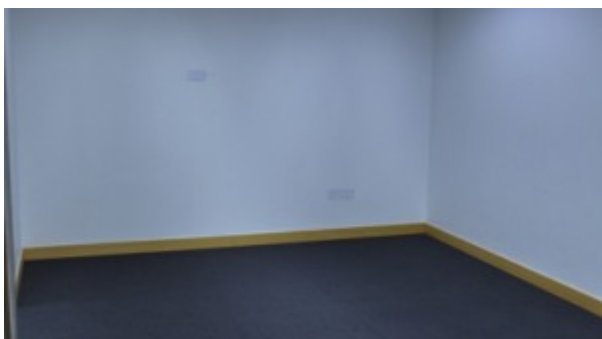
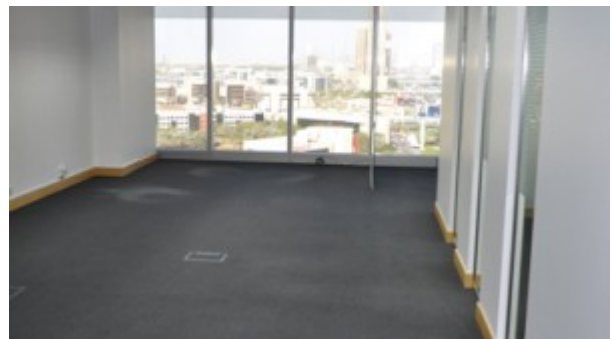
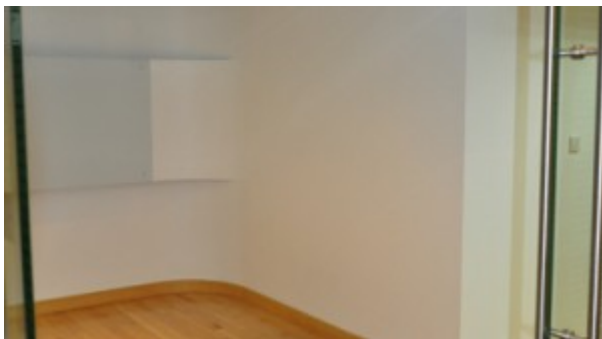
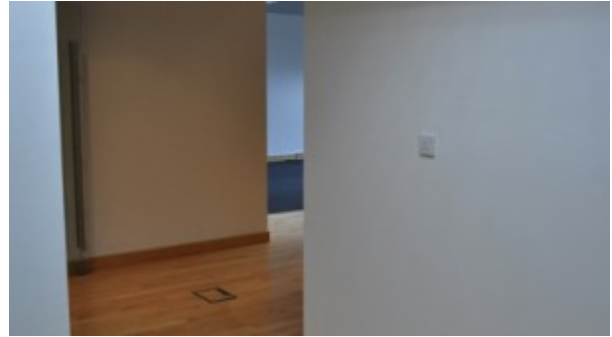
- 24/7 Security
- Central A/C
- Firefighting system
- Maintenance
- Visitors parking

Please call us for exclusive viewing

056-2054400/04-3518133

Permit No. 4742

Property Gallery





Property URL



<https://capellaproperties.ae/property/i-l-c-din-of-0216-03/>