

2 BR Apt with Community Views

Property is rented - ID: I-L-R-MDF-HK-0317-04 - Mirdif Shorouq - Apartment



BUA 1,255 Sq ft, 2 BR Apartment with Community Views

Bedrooms	2
Bathrooms	3
Plot Size	1255 sq ft
Living Area	1255 sq ft
Parking	1
Available From	4-May-2017
Ensuite	1
Half Bath	1
Price/Area	63 sq ft
Posting Date	04/05/2017
View	Community View

For detailed virtual tours of properties in Dubai, visit www.capellaproperties.ae
capella properties, Redefining Real Estate in Dubai UAE

Mirdif is a residential area located in Dubai, United Arab Emirates. Mirdif is well-connected to the whole city including business districts such as Business Bay, Dubai World Trade Centre, and Dubai Festival City. It consists of elegant and sophisticated gated communities. It consists of high-end stylish communities and European style villas. Mirdif consists mainly of villa developments, or single privately held villas. The Mirdif district comprises of main areas, such as, Uptown Mirdif, Warqaa, and Khawaneej.

This community offers high-quality Western style townhouses & Apartments in a good location

Unit Features:

- BUA 1,255 Sq Ft
- Balcony

- Built-in Wardrobes
- Ceramic Tiles
- Light fittings
- Parking 1

Community Features:

- 24/7 Security
- Central A/C

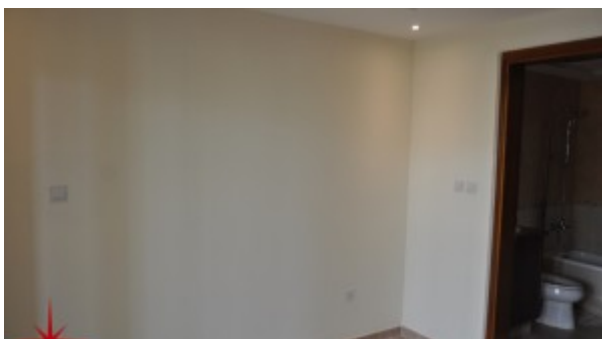
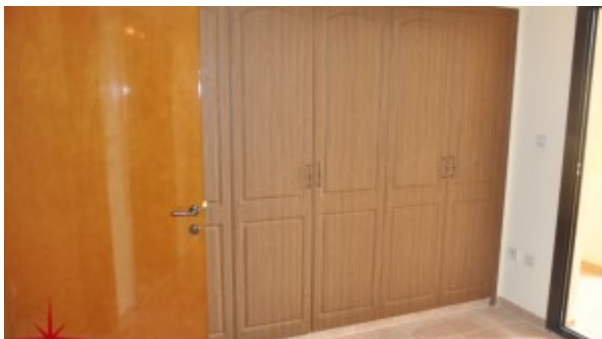
- Children's swimming pool
- Children's play area inside
- Children's play area outside
- Community centre
- Common washroom
- Firefighting system
- Gymnasium
- Maintenance
- Prayer services
- Swimming pool
- Tennis court
- Visitors parking

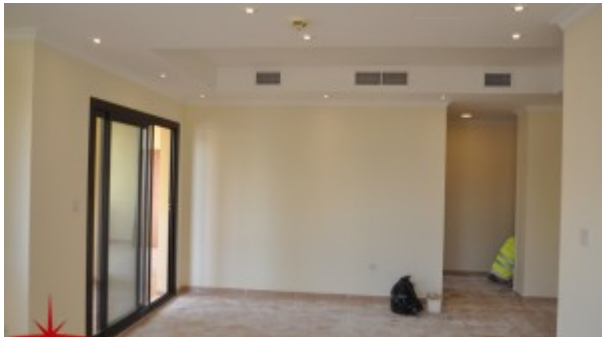
Please call us for exclusive viewing

056-2054400/04-3518133

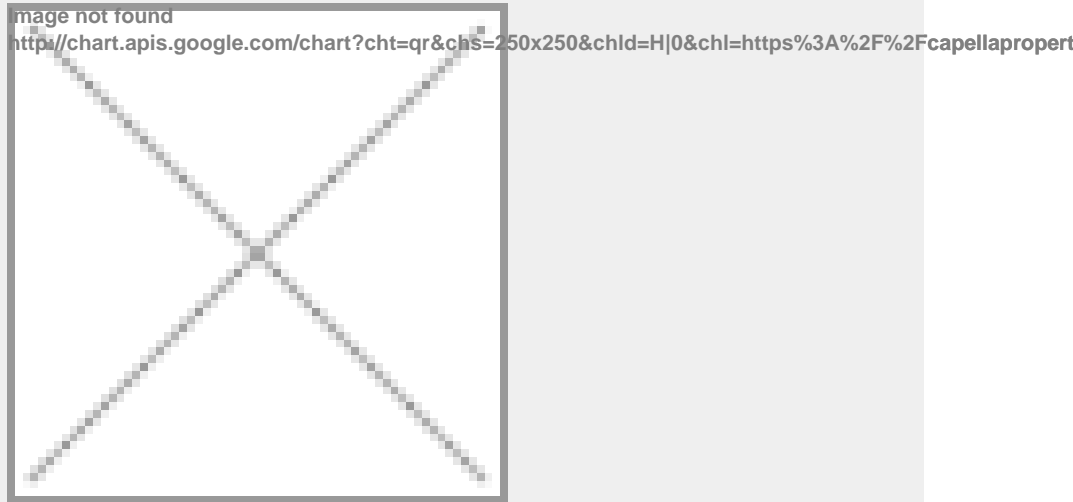
Permit No. 4742

Property Gallery





Property URL



<https://capellaproperties.ae/property/garden-view-2-br-apt-in-mirdif-i-l-r-mdf-hk-0317-04/>