

# Furnished Offices On Higher Floor with SZR and Lake View Close To Metro Station

Property is sold - ID: I-S-C-JLT-CP-0116-02 - Indigo Tower Jumeirah Lake Towers - Office



## BUA 5,436Sq Ft, Furnished Offices On Higher Floor with Sheikh Zayed Road and Lake View Close To Metro Station

Bathrooms	2
Plot Size	5436 sq ft
Living Area	5436 sq ft
Parking	4
Available From	6-Feb-2016
Furnished	Fully Furnished
Price/Area	1200 sq ft
Posting Date	06/02/2016
View	JLT Lake/ SZR

For detailed virtual tours of properties in Dubai, visit [www.capellaproperties.ae](http://www.capellaproperties.ae)  
apella properties, Redefining Real Estate in Dubai UAE

JLT is surrounded by four calming artificial lakes, landscaped gardens and meandering waterways, spread over two hundred hectares of land. Conveniently located along main Sheikh Zayed Road, JLT is easily assessable by virtue of two Metro stations, Dubai Marina and Damac. Jumeirah Lake Towers is a large development consisting of seventy nine towers with both residential and commercial projects

JLT is a free-zone as well as a free-hold, an ideal place for living, working, shopping and dining with five children playgrounds, and other facilities complementing the

high-life Dubai living

JLT embraces and nurtures both business and community living

Indigo Icon is a 35 storey commercial tower, it is easily accessible to Sheikh Zayed Road with a walking distance to Damac Metro Station. The commercial part of the tower comprises 68 offices over 8 floors. The residential and commercial floors have separate entrances, ensuring residents have total privacy.

### Unit features:

- BUA 5,436Sq Ft
- 4 parking spaces

- Panoramic view of SZR and JLT lake
- Pantry 02
- Washrooms 02

**Community features:**

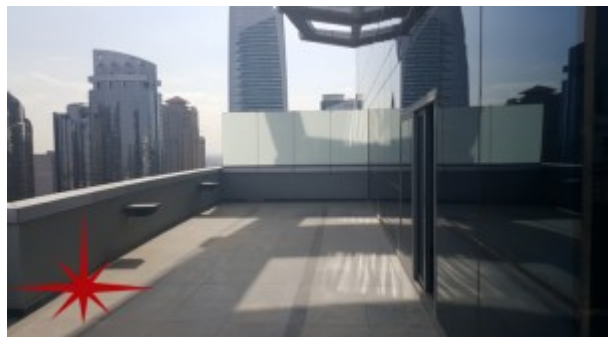
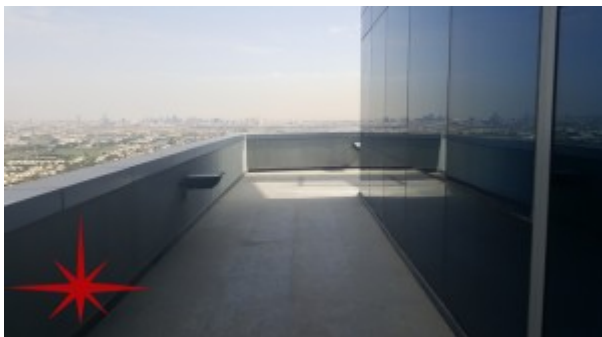
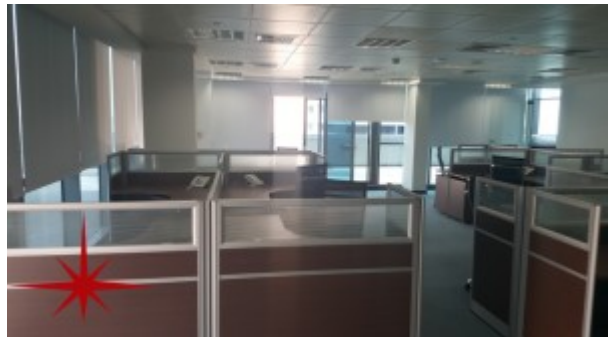
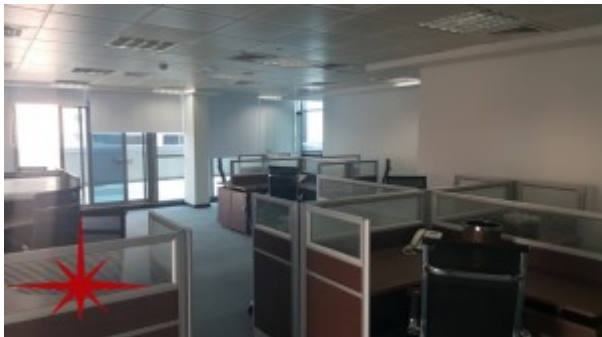
- 24/7 Security
- Central A/C
- Coffee Shop
- Community center
- Firefighting system
- Lease management
- Licensed restaurant
- Maintenance
- Visitors parking
- Property management
- Prayer services

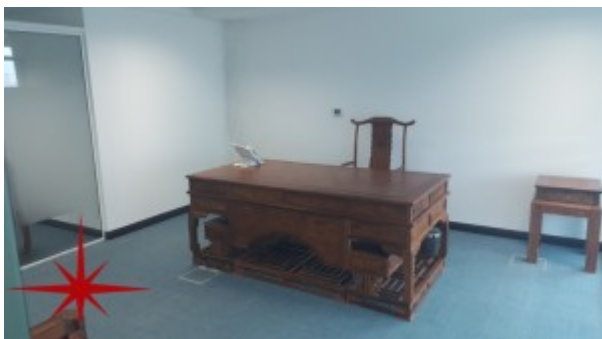
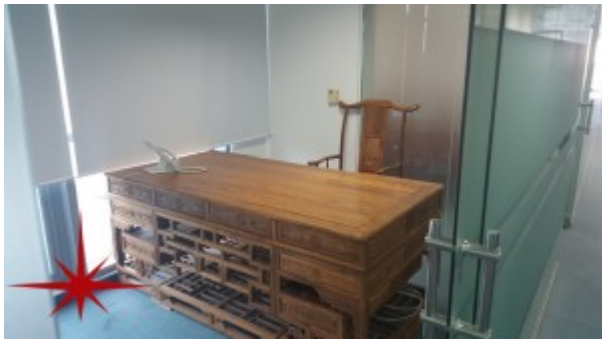
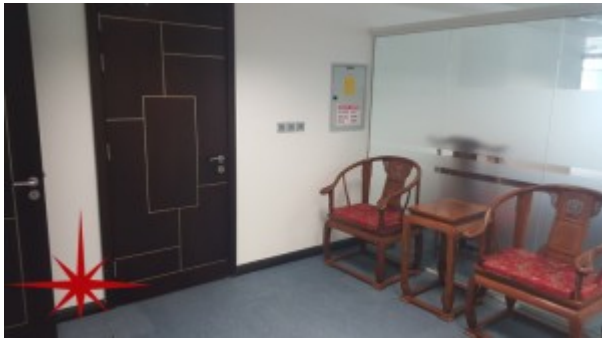
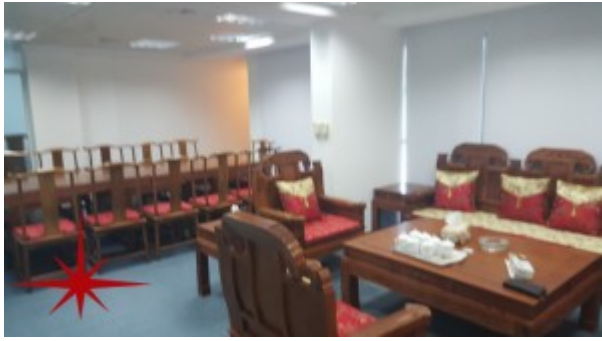
**Please call us for exclusive viewing**

**056-2054400/04-3518133**

**Permit No. 4742**

## Property Gallery





## Property URL



http://chart.apis.google.com/chart?cht=qr&chs=250x250&chld=H|0&chl=https%3A%2F%2Fcapellaproperty

<https://capellaproperties.ae/property/furnished-offices-on-higher-floor-with-szr-and-lake-view-close-to-metro-station-i-s-c-jlt-cp-0116-02/>