

Fully fitted offices with glass partition for lease

AED 434,930 - ID: LC-JLT-MP-0218-01 - Jumeirah Business Centre Jumeirah Lake Towers - Office



BUA 3,782Sq.ft Fully fitted offices with glass partition for lease

Plot Size	3782 sq ft
Living Area	3782 sq ft
Parking	4
Available From	7-Mar-2018
Half Bath	1
Price/Area	115 sq ft
Posting Date	07/03/2018
View	Meadows View

For detailed virtual tours of properties in Dubai, visit www.capellaproperties.ae
capella properties, Redefining Real Estate in Dubai UAE

Jumeirah Business Centre 3 (JBC 3) is located at the entrance to the Community. This 39 stories commercial tower has some of the best views of the Jumeirah Lake Towers Community Including two world-class golf courses, the Montgomerie and Emirates. Some of Dubai's most iconic landmarks, such as Burj Al Arab and Palm Jumeirah are in the vicinity. Easy accessible due to Dubai's metro provides short hassle-free commutes to Dubai International Airport among other major business hubs

This office can be customized according to your requirements!

Four calming artificial lakes surround JLT, landscaped gardens and meandering waterways, spread over two hundred hectares of land. Conveniently located along main Sheikh Zayed Road, JLT is easily assessable by two Metro stations – Dubai Marina and Damac – Jumeirah Lake Towers is a large development consisting of seventy-nine towers with both residential and commercial projects

JLT is a free-zone as well as a freehold, an ideal place for living, working, shopping and dining with five children playgrounds, and other facilities complementing the high-life Dubai living

JLT embraces and nurtures both business and community life!

Unit Features:

o BUA 3,782 Sq. Ft

- o Fitted, Glass partitioned office.
- o Built-in private washroom
- o 4 dedicated parking spaces available.

Community Features:

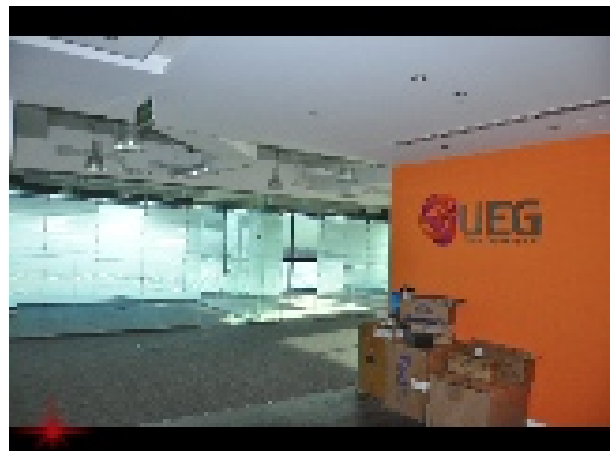
- o 24/7 Security
- o Central A/C
- o Basement Parking
- o Cafes and Restaurants
- o Male and Female Prayer rooms
- o Gymnasium
- o Property management
- o Valet services parking

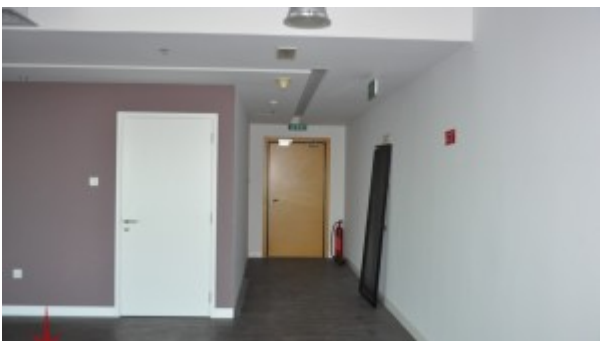
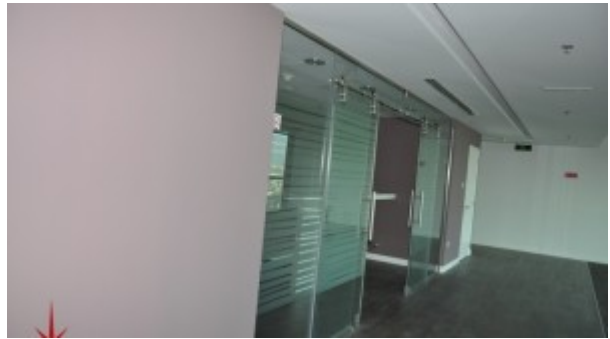
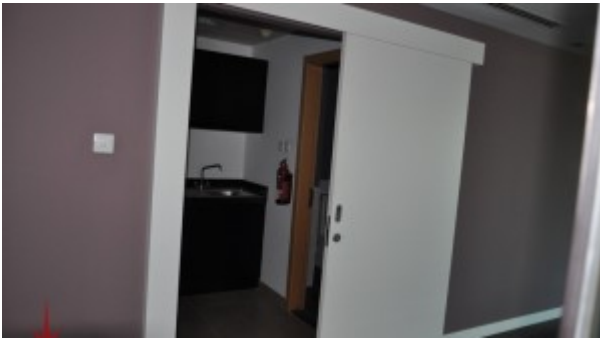
Please call us for an exclusive viewing
056-2054400/04-3518133
Permit No. 18950

Property Gallery

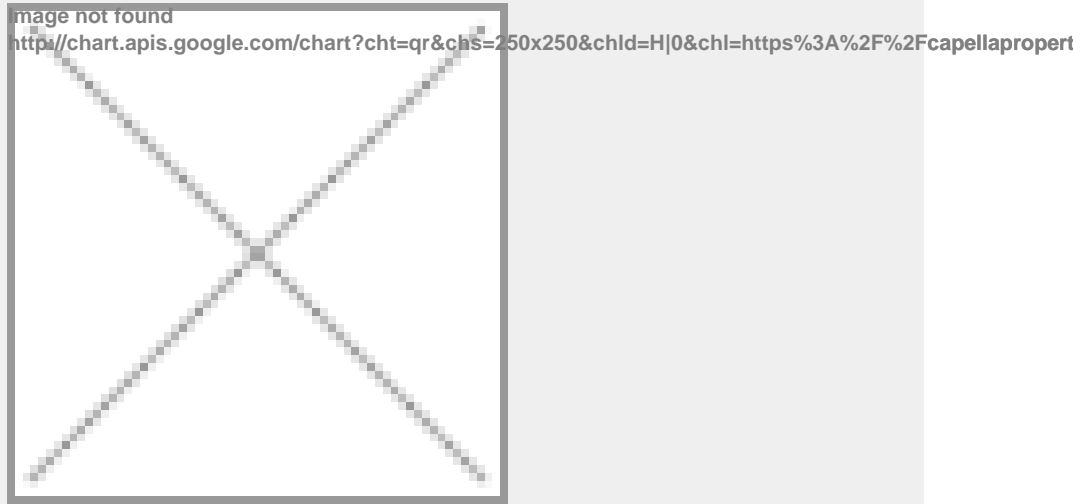


SAMSUNG CSC





Property URL



<https://capellaproperties.ae/property/fully-fitted-offices-with-glass-partition-for-lease-lc-jlt-mp-0218-01/>