

Fully Fitted Office/Retail in Park Towers

Property is rented - ID: LC-DIF-AD-1017-01 - DIFC DIFC - Shop/Showroom/Restaurant



BUA 827.20 Sq.Ft, Fully Fitted Office/Retail in Park Towers, an ideal location for either having an option of an office

Plot Size	827.20 sq ft
Living Area	827.20 sq ft
Parking	1
Available From	16-Oct-2017
Price/Area	170 sq ft
Posting Date	17/10/2017
View	Community

For detailed virtual tours of properties in Dubai, visit www.capellaproperties.ae
capella properties, Redefining Real Estate in Dubai UAE

This commercial unit is conveniently located in DIFC, Dubai. It has easy access to Sheikh Zayed Road and Al Khail Road

Park Tower, winner of the best mixed-used development in the world at the international property awards, Park Towers is a two-tower residential and commercial project in the heart of DIFC. Already an architectural icon, Park tower

has quickly become recognized as one of the most architecturally impressive real estate projects. First five floors of both towers have been set aside for commercial/office space.

Park Tower at DIFC offers panoramic views of the financial hub and provides the ultimate exclusivity and comfort, each tower is 49-storeys high

Dubai International Financial Centre (DIFC) is an on-Shore economic hub strategically located in Downtown Dubai, which provides a secure and efficient base for business and financial institutions. Surrounded by hotels, and with over 40 cafes and restaurants and 12 art galleries, DIFC has quickly established itself as one of the most fashionable addresses in Dubai

Unit features:

- BUA 827.20Sq Ft
- Fully Fitted

Community features:

- 24/7 Security
- Central A/C
- Common washroom
- Firefighting system
- Lease management
- Licensed restaurant
- Maintenance
- Visitors parking

Please call us for exclusive viewing
056-2054400/04-3518133
Permit No. 4742

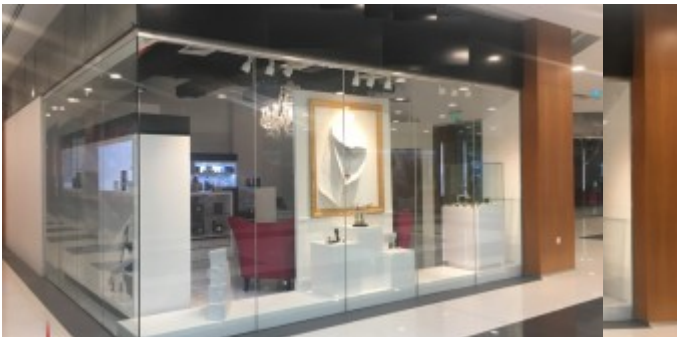
Property Gallery



SAMSUNG CSC



SAMSUNG CSC





Property URL



<https://capellaproperties.ae/property/fully-fitted-officeretail-in-park-towers-lc-dif-ad-1017-01/>