

Fully Fitted Office with Partition And Canal Views

Property is rented - ID: I-L-C-BSB-HK-0416-01 - Business Bay Business Bay - Office



BUA 872Sq Ft, Business Bay, Fully Fitted Office with Partition And Canal Views

| | |
|----------------|-------------|
| Plot Size | 865 sq ft |
| Living Area | 865 sq ft |
| Parking | 1 |
| Available From | 23-Mar-2016 |
| Price/Area | 103 sq ft |
| Posting Date | 20/04/2016 |
| View | Canal View |

For detailed virtual tours of properties in Dubai, visit www.capellaproperties.ae
capella properties, Redefining Real Estate in Dubai UAE

This commercial unit is conveniently located on the main road in the centre of Business Bay, Dubai. It has easy access to Sheikh Zayed Road, Al Khail Road and the Business Bay Metro Station

Business bay is a central business district in Dubai, United Arab Emirates. The district features numerous skyscrapers located in an area where Dubai Creek is to be extended. Business Bay will eventually have upwards of 240 buildings, comprising commercial and residential developments. Business Bay will be a new 'city' within the city of Dubai and is being built as a commercial, residential and business cluster along a new extension of Dubai Creek extending from Ras Al Khor to Sheikh Zayed Road. Covering an area of 64,000,000 square feet (5,900,000 m2), once completed it will comprise office and residential towers set in landscaped gardens with a network of roads, pathways and canals. It is on its way to becoming the region's business capital as well as a freehold city.

Unit features:

- BUA 872Sq Ft
- Ceramic Tiles
- Light fittings
- Parking

Community features:

- 24/7 Security

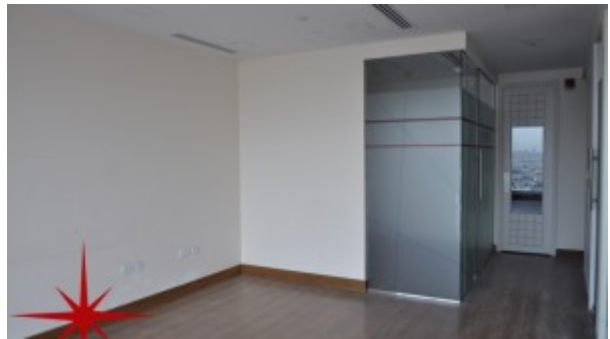
- Central A/C
- Common washroom
- Firefighting system
- Lease management
- Licensed restaurant
- Maintenance
- Visitors parking

Please call us for exclusive viewing

056-2054400/04-3518133

Permit No. 4742

Property Gallery





Property URL



<https://capellaproperties.ae/property/fully-fitted-office-with-partition-and-canal-views-i-l-c-bsb-hk-0416-01/>