

Jumeirah Lake Towers (JLT) – Fully Fitted Office with Built-in Kitchenette on a High Floor with Meadows/Community View in X2 Tower

Property is sold - ID: I/S/C/JLT/IA/**/0713/03 - Jumeirah Bay X2 Jumeirah Lake Towers - Office



Bathrooms	1
Plot Size	1236 sq ft
Parking	1
Available From	28-08-2013
Price/Area	1100 sq ft
Posting Date	30/08/2013
View	Meadows/Community

Fully Fitted Office with Built-in Kitchenette on a High Floor with Meadows/Community View in X2 Tower

Jumeirah Lake Towers is a large development consisting of seventy nine towers with residential and commercial properties surrounded by four calming artificial lakes, landscaped gardens and meandering waterways, spread over two hundred hectares of land. Conveniently located along main Sheikh Zayed Road, JLT is easily assessable by virtue of two Metro stations – Dubai Marina and JLT

JLT's commercial towers is an exceptional investment opportunity

JLT is a free-zone as well as a free-hold, an ideal place for living, working, shopping and dining with five children playgrounds, and other facilities complementing the high-life Dubai living
JLT embraces and nurtures both business and community living

Features

- 01 washroom
- 01 allocated parking
- Visitors Parking
- Light fittings
- Ceramic tiles
- 24 hour security
- Lease management

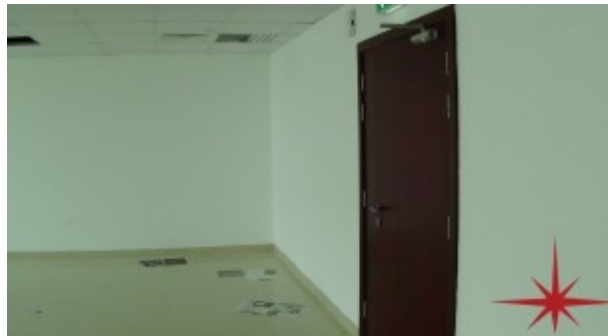
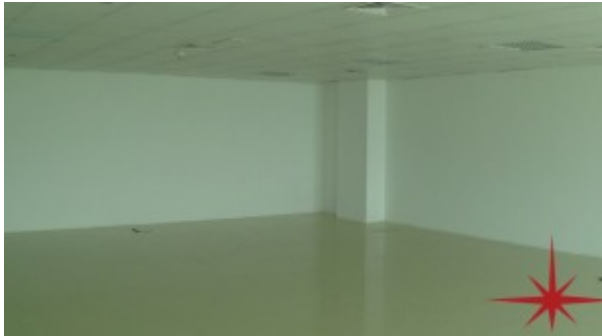
- Licensed Restaurant
- Central A/C
- Landscape internal courtyards
- Maintenance
- Property Management
- Common washroom on the floor
- Firefighting system

Please call us for exclusive viewing

056-2054400/04-3518133

Permit No. 4742

Property Gallery



Property URL



http://chart.apis.google.com/chart?cht=qr&chs=250x250&chld=H|0&chl=https%3A%2F%2Fcapellaproperty

<https://capellaproperties.ae/property/fully-fitted-office-with-built-in-kitchenette-on-a-high-floor-with-meadows-community-view-in-x2-tower/>