

Office on Main SZR with Multiple Cabins, Tiled Floor & Fittings

AED 250,337 - ID: LC-SZR-OF-0118-05 - Skeikh Zayed Road - Office



BUA 2,003 Sq Feet Office on main SZR with multiple cabins, tiled floor, and fittings

Plot Size	2003 sq ft
Living Area	2003 sq ft
Parking	2
Available From	22-Jan-2018
Price/Area	125 sq ft
Posting Date	22/01/2018
View	Sheikh Zayed Road

For detailed virtual tours of properties in Dubai, visit www.capellaproperties.ae
capella properties, Redefining Real Estate in Dubai UAE

Positioned between two metro stations, this is a spectacular commercial tower with 20 floors of fitted offices, with retail on the ground on Main Sheikh Zayed Road

Where you can enjoy the restaurants and hustle and bustle of High Dubai Life, yet at the same time enjoy privacy. The dedicated car parking building connecting to commercial tower is separately located for the convenience of

commercial tower and guests

Fitted with 7 cabins, a tiled floor, full pantry. Perfect for a small-medium enterprise.

Unit Features:

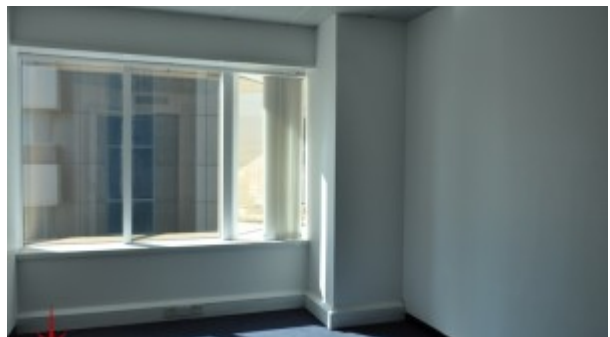
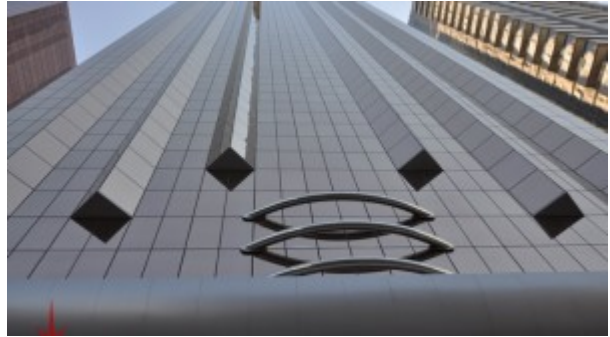
- " 2 parking space
- " BUA 2,003 sq feet
- " 7 cabins
- " Multiple cabins
- " Server room
- " Shared toilet
- " pantry

Community Features:

- " 24/7 Security
- " Central A/C
- " Firefighting system
- " Maintenance
- " Visitors parking

Please call us for exclusive viewing
056-2054400/04-3518133
Permit No. 18950

Property Gallery





Property URL



<https://capellaproperties.ae/property/fitted-office-on-main-szr-with-easy-access-to-metro-lc-szr-of-0118-05/>