

Fitted Office with Partition & Carpeted floor on Mid-Floor Next to Metro

AED 222,295 - ID: LC-SZR-OF-0118-02 - Skeikh Zayed Road - Office



BUA 1,933 Sq Ft Fitted office with partition and carpeted floor on mid-floor next to metro

Plot Size	1933 sq ft
Living Area	1933 sq ft
Parking	2
Available From	22-Jan-2018
Price/Area	115 sq ft
Posting Date	22/01/2018
View	Sheikh Zayed Road

For detailed virtual tours of properties in Dubai, visit www.capellaproperties.ae
capella properties, Redefining Real Estate in Dubai UAE

Positioned between two metro stations, this is a spectacular commercial tower with 20 floors of fitted offices, with retail on the ground on Main Sheikh Zayed Road

Where you can enjoy the restaurants and hustle and bustle of High Dubai Life, yet at the same time enjoy privacy. The dedicated car parking building connecting to commercial tower is separately located for the convenience of

commercial tower and guests

The unit is located on a mid-floor, fitted out with a carpeted look, it has multiple cabins for companies that like privacy.

Unit Features:

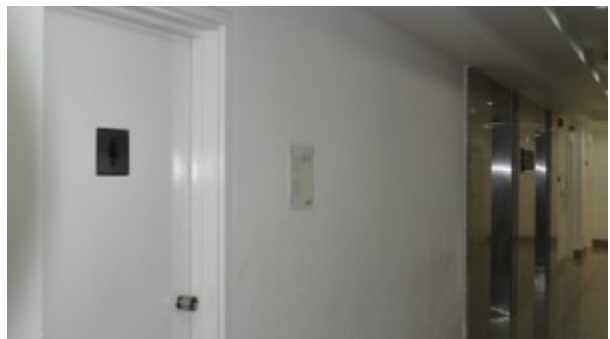
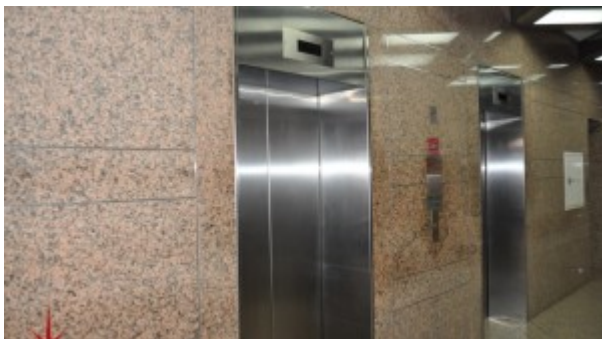
- " 2 parking spaces
- " BUA 1'933sq feet
- " Multiple cabins
- " Server room
- " Shared toilet
- " pantry

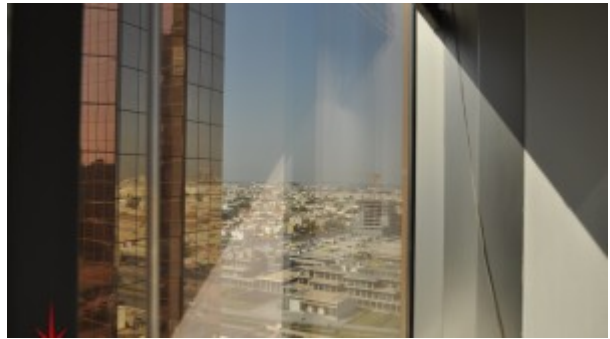
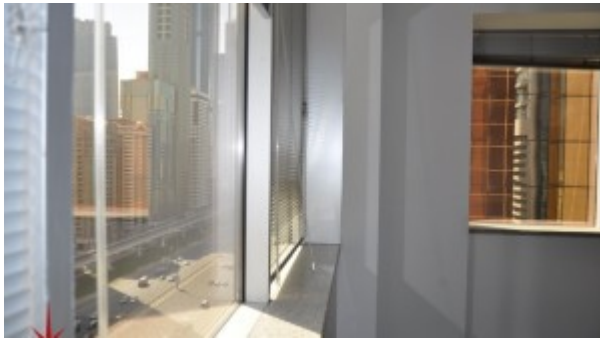
Community Features:

- " 24/7 Security
- " Central A/C
- " Firefighting system
- " Maintenance
- " Visitors parking

Please call us for exclusive viewing
056-2054400/04-3518133
Permit No. 18950

Property Gallery





Property URL



<https://capellaproperties.ae/property/fitted-office-on-main-szr-with-easy-access-to-metro-lc-szr-of-0118-02/>