

Fitted office on Main SZR with Easy Access to Metro

AED 184,000 - ID: LC-SZR-OF-0118-01 - Skeikh Zayed Road - Office



BUA 1,600 Sq Feet Fitted office on the main SZR with easy access to metro

Plot Size	1600 sq ft
Living Area	1600 sq ft
Parking	2
Available From	22-Jan-2018
Price/Area	115 sq ft
Posting Date	22/01/2018
View	Sheikh Zayed Road

For detailed virtual tours of properties in Dubai, visit www.capellaproperties.ae
capella properties, Redefining Real Estate in Dubai UAE

Positioned between two metro stations, this is a spectacular commercial tower with 20 floors of fitted offices, with retail on the ground on Main Sheikh Zayed Road

Where you can enjoy the restaurants and hustle and bustle of High Dubai Life, yet at the same time enjoy privacy. The dedicated car parking building connecting to commercial tower is separately located for the convenience of commercial tower and guests

The units itself is positioned on a lower floor, the restrooms are shared by the offices on the floor. The building is structured in a way where there are only 4 units on the same floor.

Unit Features:

- 1 parking space
- BUA 1600 sq feet
- Shared toilet
- Shared pantry

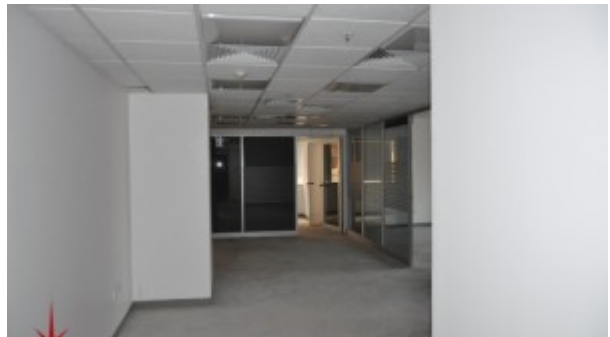
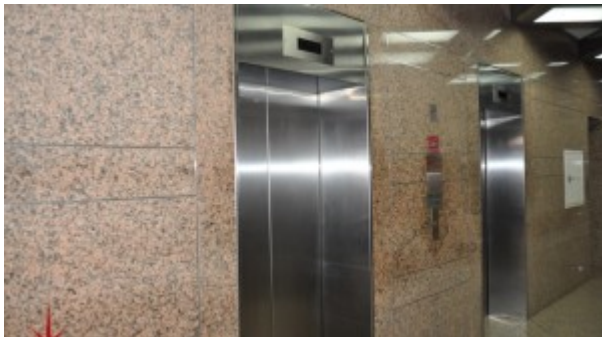
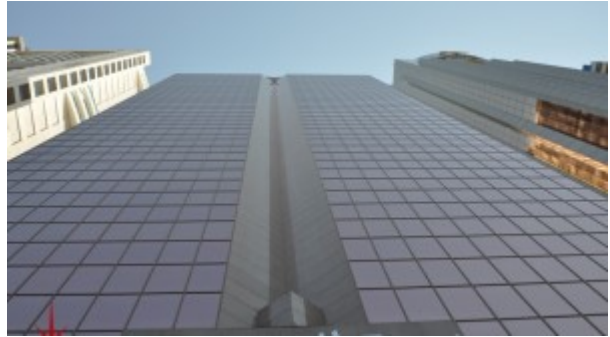
Community Features:

- 24/7 Security
- Central A/C
- Firefighting system

Maintenance
Visitors parking

Please call us for exclusive viewing
056-2054400/04-3518133
Permit No. 18950

Property Gallery





Property URL



http://chart.apis.google.com/chart?cht=qr&chs=250x250&chld=H|0&chl=https%3A%2F%2Fcapellaproperty

<https://capellaproperties.ae/property/fitted-office-on-main-szr-with-easy-access-to-metro-lc-szr-of-0118-01/>