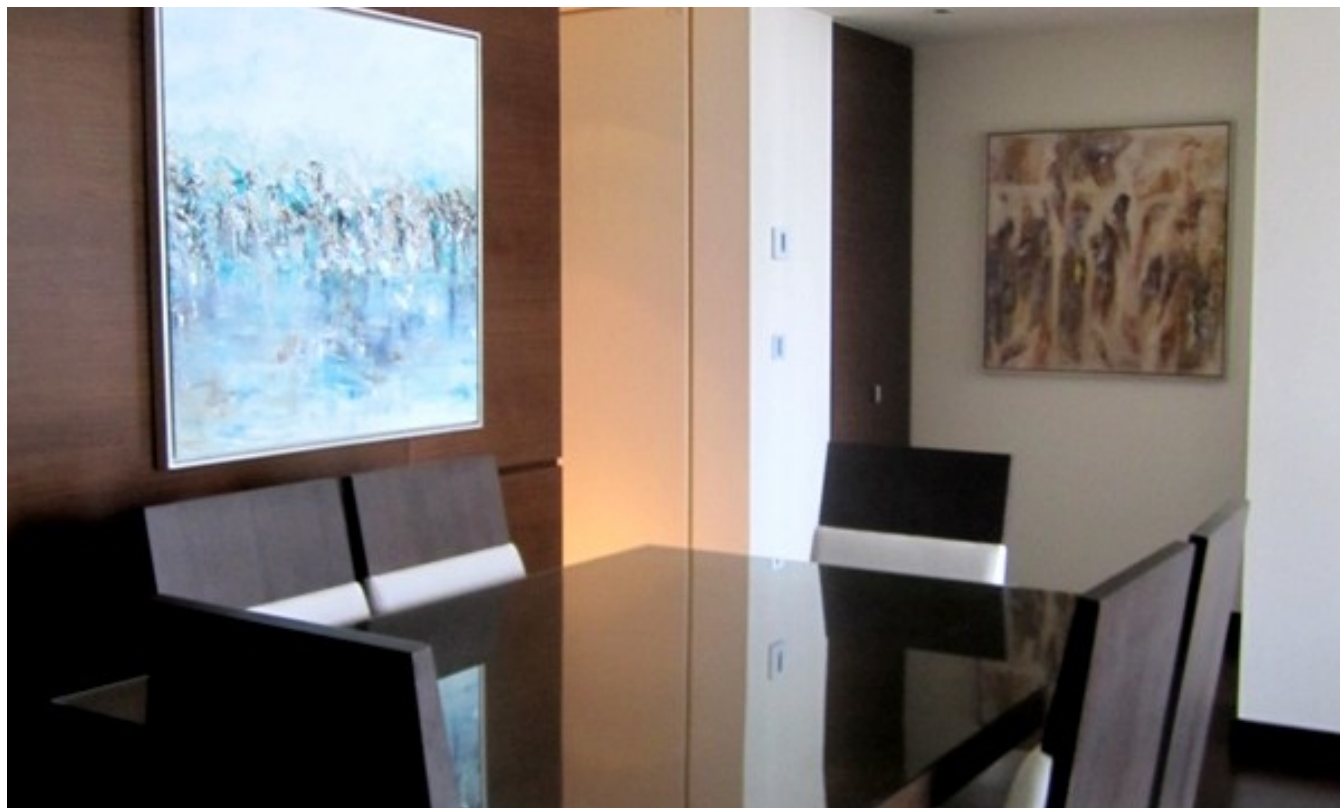


Downtown, Exquisite 2 Bedroom Apt with Sea, Lake & Shk Zayed Road View

Property is rented - ID: I-L-R-DTD-PZ-XX-0813-07 - Burj Khalifa Downtown Dubai - Apartment



Bedrooms	2
Bathrooms	2
Plot Size	1639 sq ft
Parking	1
Available From	10-09-13
Ensuite	1
Half Bath	1
Posting Date	09/09/2013
View	Sea/Fountain/Shk Zayed
Agent's Name	Abigel
Agent's Mobile No	0561156850
Agent's Email Address	properties@faqihient.com

Exquisite 2 Bedroom Apt with Sea, Lake & Shk Zayed Road View

Burj Khalifa – The World's tallest man-made structure was completed in 2009. The beautifully designed eco-friendly gigantic tower is located at the core of an integrated township Downtown Burj Khalifa, which features several more developments apart from the main tower. It includes developments know as Downtown Dubai, Old Town, Boulevard and Residences and numerous other projects that has made Downtown very attractive for investors and tourists

These developments have luxury Residential suits and serviced apartments. This area hosts a wide selection of luxury and boutique hotels such as Burj Khalifa Lake Hotel & Serviced Apartments, the Address Hotels, Al Manazel, The Palace Hotel and many more world renowned hotels

The world's largest mall The Dubai Mall and an eco-friendly landscape carrying the man-made Burj Khalifa Lake makes Downtown to shop by day and play by night. The tower has direct

access to The Dubai Mall, which is the largest shopping and entertainment center in the world. And it's also close to the Souq Al Bahar, where you are sure to enjoy the atmosphere and the variety of restaurants to watch the amazing fountain dance from the ground

The spiraling Burj Khalifa, on its part, offers exclusive corporate offices, residential apartments, four lavish swimming pools, one cigar club, one observation deck, lounge, gymnasium, library and several other amenities, such as restaurants, to enhance its aura. An Armani Hotel, the first of its kind, occupies the first 37 floors and 700 private apartments have been allotted from floor number 45 to 108. The spire, measuring 200m in this 818m high building, has house communication equipment's of various kinds

Last but not the least, Burj Khalifa is the ultimate tower to live and enjoy life!!

Features:

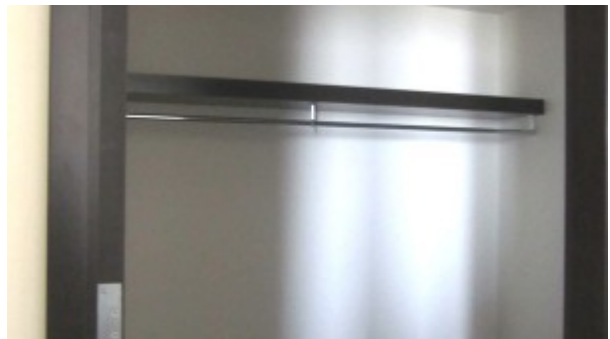
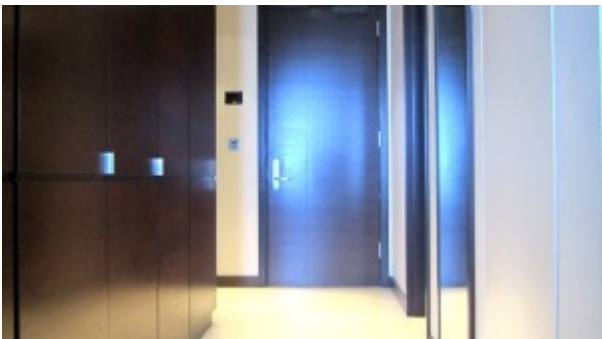
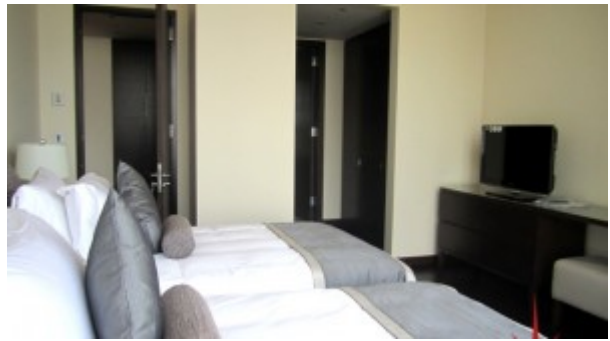
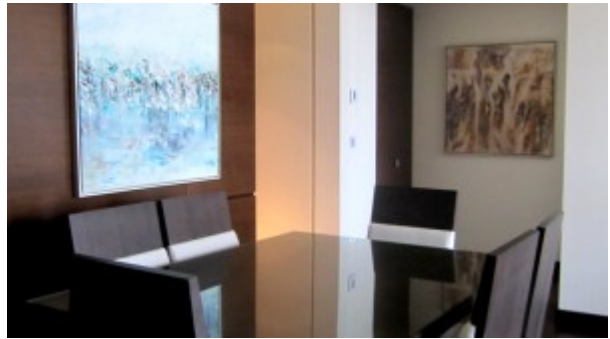
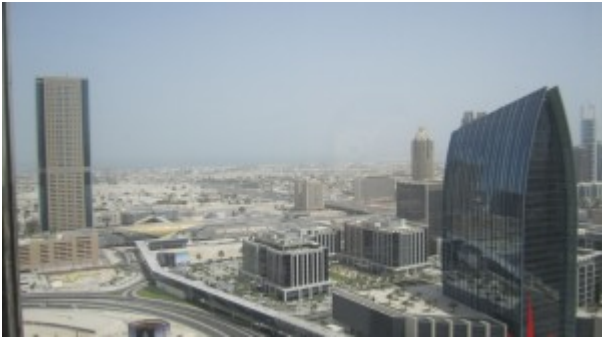
- 1 en-suite bedroom
- Luxury furnished by Emaar
- 1 powder room
- Covered area 1,639 Square Feet
- 1 allocated parking space
- Built-in closet
- Walk-in closet
- Laundry room
- Study
- Pets allowed
- Coffee shop
- Super market
- Electric stove/oven
- Fridge/freezer
- Dishwasher
- Washing machine
- Microwave
- Prayers services
- Gymnasium
- Children swimming pool
- Swimming Pool
- 24 hours security
- Central A/C
- Landscaped Internal Courtyards
- Maintenance
- Property Management
- Visitors Parking
- Firefighting system
- Light fittings
- Ceramic tiles

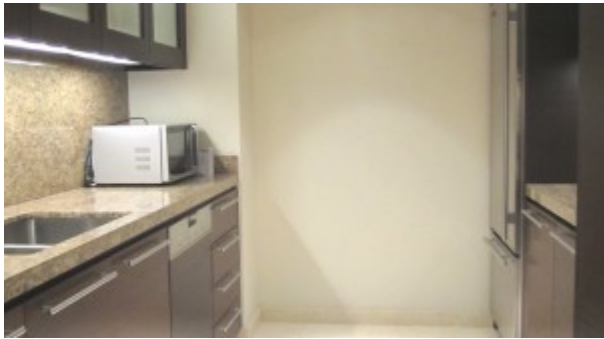
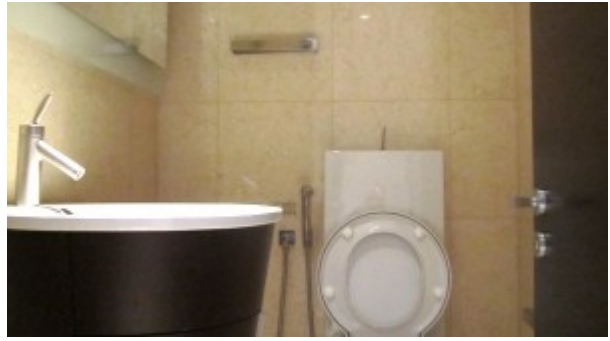
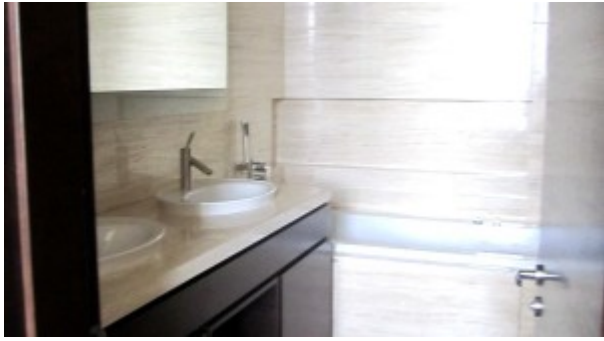
Please call us for exclusive viewing

056-2054400/04-3518133

Permit No. 4742

Property Gallery





Property URL



<https://capellaproperties.ae/property/exquisite-2-bedroom-apt-with-sea-lake-shk-zayed-road-view-i-l-r-dtd-pz-xx-0813-07/>