

Duplex Apt in Burj Daman with Spectacular Views of DIFC in 1 Cheque

Property is rented - ID: I-L-R-DIF-OF-0616-01 - DIFC DIFC - Apartment



BUA 1,598Sq Ft, Duplex apartment in Burj Daman with spectacular views of DIFC in 1 cheque

Bedrooms	2
Bathrooms	3
Plot Size	1598 sq ft
Living Area	1598 sq ft
Parking	2
Available From	4-Jun-2016
Half Bath	1
Price/Area	112 sq ft
Posting Date	04/06/2016
View	Community

For detailed virtual tours of properties in Dubai, visit www.capellaproperties.ae
capella properties, Redefining Real Estate in Dubai UAE

The Dubai International Financial Centre (DIFC) is a federal financial free zone situated in the Emirate of Dubai, United Arab Emirates. The DIFC occupies a physical territory of approximately 110 acres. It has its own legal system and courts distinct from those of the wider UAE, with jurisdiction over corporate, commercial, civil, employment, trusts and securities law matters.

The DIFC aims to provide a platform for business and financial institutions to reach into and out of the emerging markets of the region. It was established to create an environment for growth, progress and economic development in the UAE and the wider region by providing the needed legal and business as well as physical infrastructure benchmarked against international standards.

Dubai International Financial Centre is also home to art galleries which showcase

both local and international art

The galleries showcase works by Middle Eastern and international artists, and frequently host events to present new works from different artists. Some of the galleries also act as auction houses. There is a variety of 42 cafes and restaurants located in this area featuring local and international chains; the selection of eateries includes everything from fast food outlets to dining options. A wide variety of cuisines can be found here.

Within the DIFC complex are located a variety of retail shops and convenience stores along with business services outlets. Within the DIFC one can find hair salons for men and women, nail salons, fitness facilities, a cobbler, a tailor, flower shops, electronic stores, gift shops, a medical clinic, etc

Unit features:

- BUA 1,598Sq Ft
- 2 allocated parking space in the basement
- 2 en-suite apartment
- Built-in wardrobe
- Ceramic tiles
- Dishwasher
- Electric stove
- Electric Oven
- Fridge
- Light fittings
- Maids room with attached bathroom
- Terrace
- Washing Machine

Community features:

- 24/7 Security
- Central A/C
- Pets allowed
- Firefighting system
- Fitness club
- Maintenance
- Prayers services
- Restaurants
- swimming pools
- Visitors parking

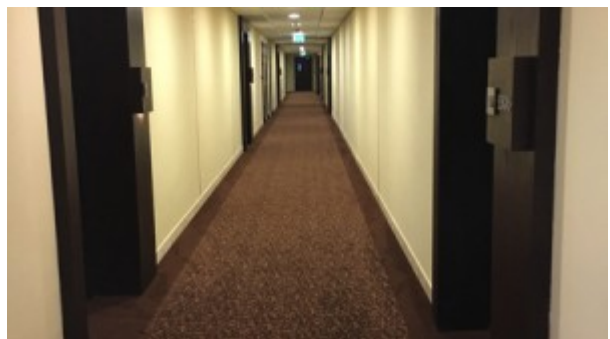
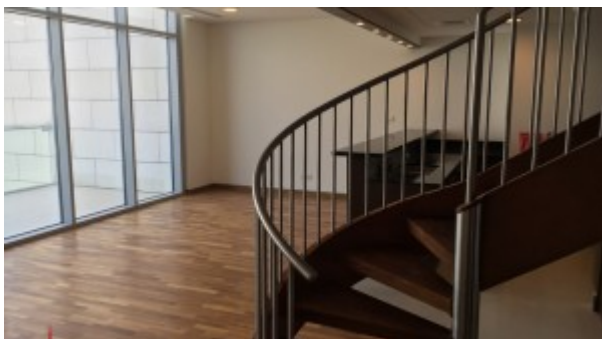
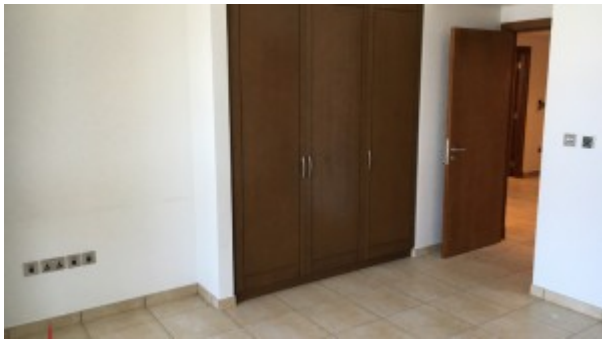
Please call us for exclusive viewing

056-2054400/04-3518133

Permit No. 4742

Property Gallery





Property URL



<https://capellaproperties.ae/property/duplex-apt-in-burj-daman-with-spectacular-views-of-difc-in-1-cheque-i-l-r-dif-of-0616-01/>