

Jumeirah Lake Towers (JLT) – Duplex Apartment 2 En-suite Bedrooms on a Higher Floor with Spectacular Views of Golf Course, Em Hills & SZR

Property is rented - ID: I-L-R-JLT-SZ-1013-01 - Jumeirah Bay X2 Jumeirah Lake Towers - Apartment



Bedrooms	2
Bathrooms	3
Plot Size	1970 sq ft
Parking	2
Available From	07-10-13
Ensuite	2
Half Bath	1
Maid Room	1
Maids Bath	1
Posting Date	07/10/2013
Store	1
View	Golf Course/Emirates Hills/Sheikh Zayed

Duplex Apartment 2 En-suite Bedrooms on a Higher Floor with Spectacular Views of Golf Course, Emirates Hills & Sheikh Zayed Road

JLT is surrounded by four calming artificial lakes, landscaped gardens and meandering waterways, spread over two hundred hectares of land. Conveniently located along main Sheikh Zayed Road, JLT is easily assessable by virtue of two Metro stations – Dubai Marina and JLT. Jumeirah Lake Towers is a large development consisting of seventy nine towers with both residential and commercial projects

JLT is a free-zone as well as a free-hold, an ideal place for living, working, shopping and dining with five children playgrounds, and other facilities complementing the high-life Dubai living
JLT embraces and nurtures both business and community living

Jumeirah X1 Tower is conveniently located making an easy access to Sheikh Zayed Road and is located close to Marina Metro Station, it has beautiful entrance and a lobby, apartments are designed to allow maximum natural light, high quality fittings and fixtures, kitchens are equipped with modern breakfast bar, marble vanity counters are placed in both kitchen and bathrooms. The other features include storage, family room and maid's room, separate gymnasium for ladies and gents, large swimming pool, sauna Jacuzzi and steam room, controlled

building and parking access, lake side promenade with retail shopping and restaurants

Please call us for exclusive viewing

Unit's Features

- Duplex Apartment – An apartment having rooms on two floors that are connected by a staircase
- Located close to Marina Metro Station
- BUA 1,970 square feet
- 2 en-suite bedrooms
- 2 Kitchens – one downstairs and other upstairs with elegant cabinetry and granite
- Maids Room with attached bathroom
- Balcony
- Built-in wardrobes
- Large store room
- Allocated parking for two vehicles
- Light fittings
- Ceramic tiles

Community Features

- Maintenance
- Property management
- Five lifts
- One service lift
- Large swimming pool
- Sauna & Jacuzzi
- Steam room
- Separate gymnasium for ladies & gents
- 24 hours security
- Controlled building and parking access
- Visitors parking
- Prayers services
- Central A/C
- Pets Allowed
- Lake side promenade with retail shopping & restaurants

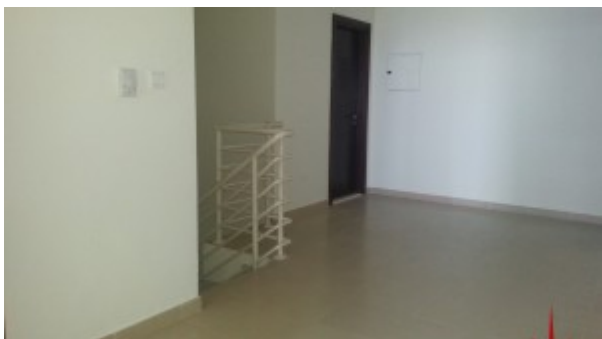
Please call us for exclusive viewing

056-2054400/04-3518133

Permit No. 4742

Property Gallery







Property URL



http://chart.apis.google.com/chart?cht=qr&chs=250x250&chld=H|0&chl=https%3A%2F%2Fcapellaproperty

<https://capellaproperties.ae/property/duplex-apartment-2-en-suite-bedrooms-on-a-higher-floor-with-spectacular-views-of-golf-course-emirates-hills-sheikh-zayed-road-i-l-r-jlt-sz-1013-01/>