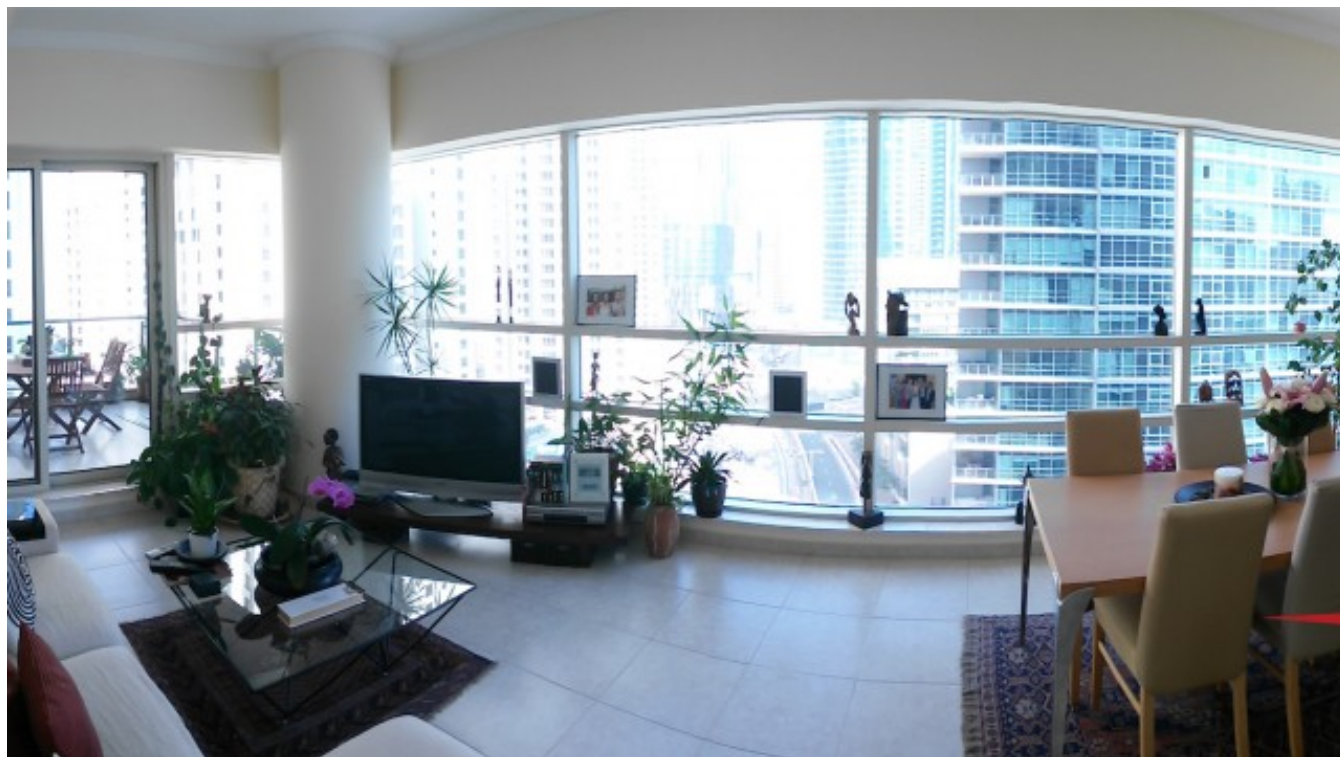


Dubai Marina – Al Sahab 2 –2 BR Apt with Partial Marina, Sea View

Property is rented - ID: I-L-R-DMR-NB-1113-04 - Al Sahab Dubai Marina - Apartment



Bedrooms	2
Bathrooms	2
Living Area	1351 sq ft
Parking	1
Available From	8-Dec-13
Ensuite	1
Half Bath	1
Posting Date	08/12/2013
Store	1
View	Partial Sea / Marina

Al Sahab 2 is a spectacular waterfront 44 floors twin tower which directly overlooks the largest bay of water at Dubai Marina. From the level three Marina homes upwards, all residents have unparalleled views over Dubai Marina

Dubai Marina is an artificial canal city which includes vast amount of residential buildings, built along the shore-line of Persian Gulf. It is situated near Jebal Ali Sea Port, Dubai Internet City, Dubai Media City and American University of Dubai. It is one of the few places in Dubai where people from Western Europe live in majority

It has a seven kilometers long pedestrian walkway with cafe's and restaurants along the waterfront. Marina provides breathtaking views of the city and the marina with top of the line yachts and boats, as well as entertainment and other leisure activities to make your living, visit or stay pleasurable

Unit features:

- Balcony
- Built-in wardrobes

- Ceramic tiles
- Light fittings
- Storeroom
- Large terrace
- Fully equipped kitchen with:
 - o Dishwasher
 - o Fridge/freezer
 - o Microwave

- o Washing machine
- o Electric stove/oven

Community features:

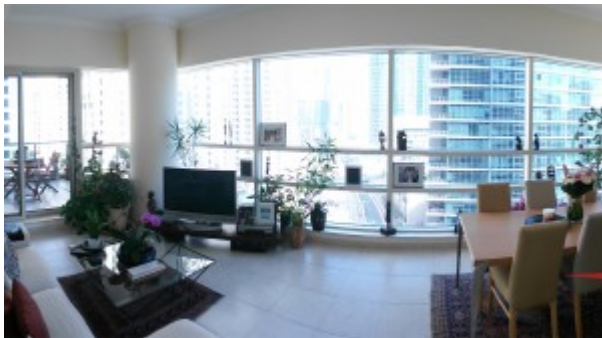
- 24/7 security
- Central A/C
- Firefighting system
- Gymnasium
- Maintenance
- Squash court
- Swimming pool
- Covered parking
- Multi-function rooms
- Meeting rooms

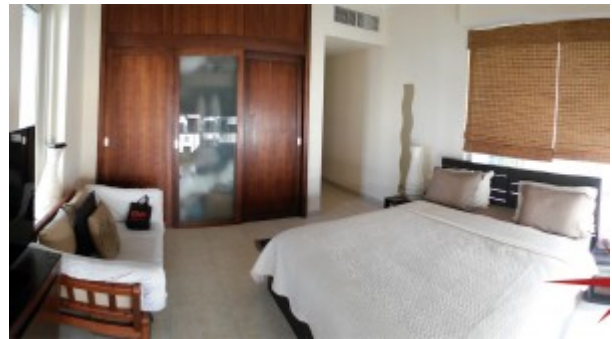
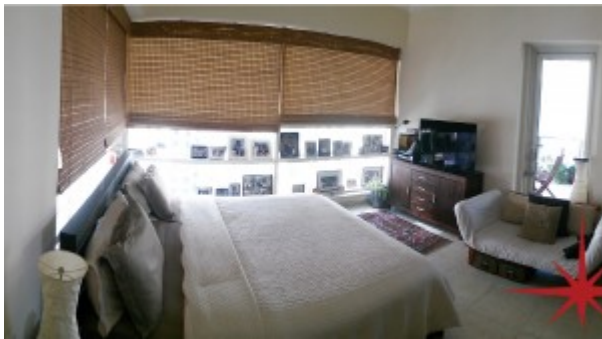
Please call us for exclusive viewing

056-2054400/04-3518133

Permit No. 4742

Property Gallery





Property URL



<https://capellaproperties.ae/property/dubai-marina-al-sahab-2-2-br-apt-with-partial-marina-sea-view/>