

Business Bay, shell and core retail space with easy access on 2 year fixed rent contract

Property is rented - ID: I-L-C-BSB-OF-0815-02 - Business Bay Business Bay - Shop/Showroom/Restaurant



BUA 4,619 Sq Feet Business Bay, Shell and Core Retail Space with Easy Access on 2 Years Fixed Rent Contract

Living Area	4619 sq ft
Parking	8
Available From	13-Aug-15
Price/Area	176 sq ft
Posting Date	13/08/2015
View	Community

For detailed virtual tours of properties in Dubai, visit www.capellaproperties.ae

This tower is known for its reputation and is located exactly on the entrance of business bay from Al-khail Road. The retail space makes it a perfect location for pharmacies, nursery or businesses that require foot fall. With easy access, it makes it easy to enter and exit business bay.

Business bay is a central business district in Dubai, United Arab Emirates. The district features numerous skyscrapers located in an area where Dubai Creek is to be extended. Business Bay will eventually have upwards of 240 buildings, comprising commercial and residential developments. Business Bay will be a new 'city' within the city of Dubai and is being built as a commercial, residential and business cluster along a new extension of Dubai Creek extending from Ras Al Khor to Sheikh Zayed Road. Covering an area of 64,000,000 square feet (5,900,000 m²), once completed it will comprise office and residential towers set in landscaped gardens with a network of roads, pathways and canals. It is on its way to becoming the region's business capital as well as a freehold city.

Unit features:

- 8 parking space
- BUA 4,619 sq feet

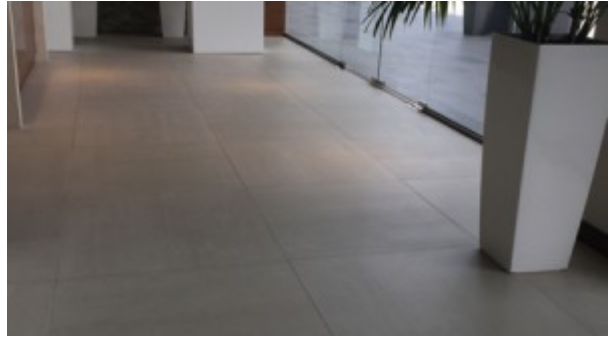
Community features:

- 24/7 Security
- Central A/C

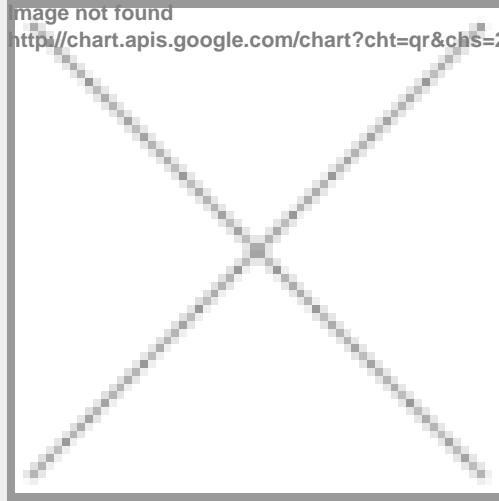
- Coffee shop
- Firefighting system
- Maintenance
- Visitors parking

Please call us for exclusive viewing
056-2054400/04-3518133
Permit No. 4742

Property Gallery



Property URL



<https://capellaproperties.ae/property/business-bay-shell-core-retail-space-easy-access-and-high-roi-for-leasee-i-l-c-bsb-of-0815-02/>