

Business Bay – Shell & Core Office on Higher Floor in Business Tower By Damac

AED 952,850 - ID: I-S-C-BSB-IA-1113-02 - Business Bay Business Bay - Office



BUA 1,003Sq Ft, Business Tower by Damac – Business Bay

| | |
|----------------|---------------|
| Plot Size | 1003 sq ft |
| Living Area | 1003 sq ft |
| Parking | 2 |
| Available From | 7-Dec-13 |
| Price/Area | 950 sq ft |
| Posting Date | 07/12/2013 |
| View | Al Khail/Lake |

A symbol of dynamism and growth, Business Tower in the Burj Area is a signature commercial building which stands out amongst other properties in Dubai

Work in an ambiance designed to add magnificence to your business. Brainstorm in a highly conducive environment that inspires and empowers. Experience success beyond your dreams at Business Bay Located in the business capital of the region, this unique tower houses state-of-the-art business centers and offices that embodies luxurious comforts and convenience

Unit features:

- Covered area 1,003Sq Ft

- 2 allocated parking's

Community features:

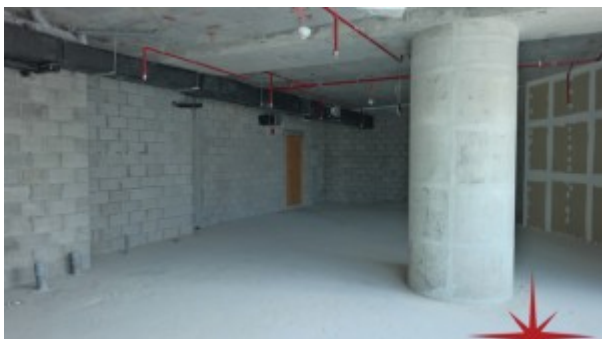
- 24/7 security & security cameras
- Swipe access
- Gymnasium
- Multilevel car parking
- Central A/C
- Maintenance
- Prayers services
- Visitors parking
- Common washroom
- Firefighting system

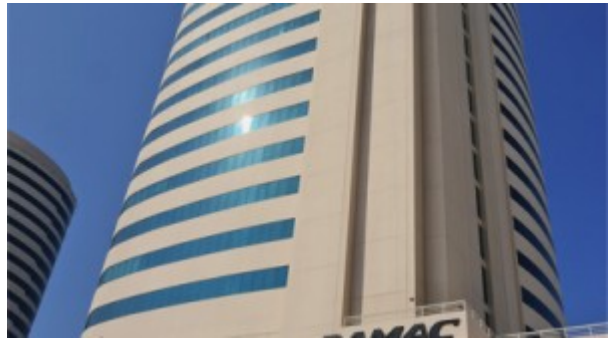
Please call us for exclusive viewing

056-2054400/04-3518133

Permit No. 4742

Property Gallery





Property URL



http://chart.apis.google.com/chart?cht=qr&chs=250x250&chld=H|0&chl=https%3A%2F%2Fcapellaproperty

<https://capellaproperties.ae/property/business-bay-shell-core-office-on-higher-floor-in-business-tower-by-damac-i-s-c-bsb-ia-1113-02/>