

Business Bay, Shell and Core Office Floor in the most Prestigious Business Tower

Property is sold - ID: I/S/C/BSB/OF/0114/04 - Business Bay Business Bay - Full Floor Office



Living Area	9306 sq ft
Parking	12
Available From	1-Feb-14
Price/Area	2100 sq ft
Posting Date	01/02/2014
View	Panoramic B Khalifa, Beach, Stables, SZR

9,306Sq Ft – Shell and Core Office Floor with Stables, Sheikh Zayed & Al Khail Road View

For detailed virtual tours of properties in Dubai, visit www.capellaproperties.ae

Work in an ambiance designed to add brilliance to your business. Brainstorm in a highly conducive environment that inspires and empowers. Experience success beyond your dreams at this designer office tower at Business Bay! "The Business Capital of the Region"

Conveniently located in the centre of Business Bay – Dubai, with easy access to Sheikh Zayed Road and the Dubai Metro

This office tower has a unique blend of quiet efficiency and state-of-the-art technology. Located at the entrance of Business Bay, makes it an ideal location for business. Business Bay is the renowned home to the world's tallest building and prestigious offices, developments, high-end residential towers and hotels

Designed and planned by world-class architects and consultants, this development stands apart, distinct from other buildings. The commercial tower benefits from flexible planning of office space, since floors which can be divided into four offices may be sold as a single unit, separate units or mixed units as per the requirements of each buyer.

Unit features:

- BUA 9,306Sq Ft
- 9 allocated parking

Community features:

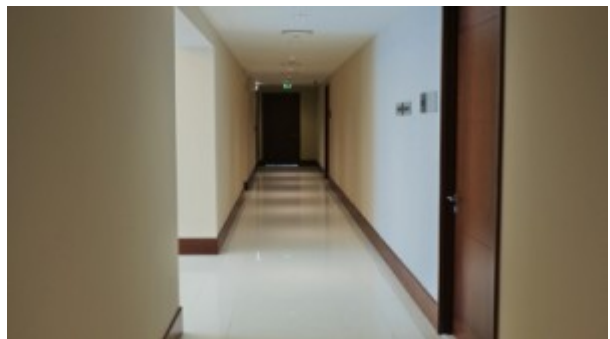
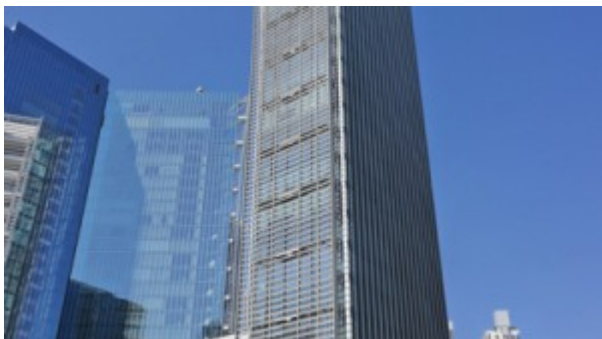
- 24/7 security
- Central A/C
- Common washroom
- Firefighting system
- Landscaped internal courtyards
- Licensed restaurant
- Maintenance
- Prayers services
- Visitors parking

Please call us for exclusive viewing

056-2054400/04-3518133

Permit No. 4742

Property Gallery





Property URL



<https://capellaproperties.ae/property/business-bay-shell-core-office-floor-4/>