

Breathtaking 2 Bedroom Apt on Higher/F with Full B. Khalifa, Old Town, Partial Fountain View

Property is rented - ID: I/L/R/DTD/CP/1013/01 - Downtown Dubai Dubai - Apartment



Bedrooms	2
Bathrooms	3
Plot Size	1485 sq ft
Parking	1
Available From	5 Oct 13
Ensuite	2
Half Bath	1
Posting Date	05/10/2013
View	Full Burj Khalifa/Old Town & Partial Fountain View

Breathtaking 2 Bedroom Apt on Higher/F with Full B. Khalifa, Old Town, Partial Fountain View

Driving down the heart of Dubai – Down-town!! The Boulevard, land-mark buildings with state of the art architecture located on either side. It is a wonderful location encompassing all elements that are ideal for commercial and residential purposes

Down-town Dubai is the center of luxury living, you are surely getting an apartment that says more than just comfort, convenience and efficiency. This is a spacious one bedroom apartment located in Burj Views. Enjoy this apartment with great 360 views of Business Bay Lake and Dubai Mall

This apartment has two en-suite bedrooms, separate powder room, enchanting terrace and a large lounge. A well equipped kitchen, finished in stainless steel and wood with built-in closets complementing its surroundings

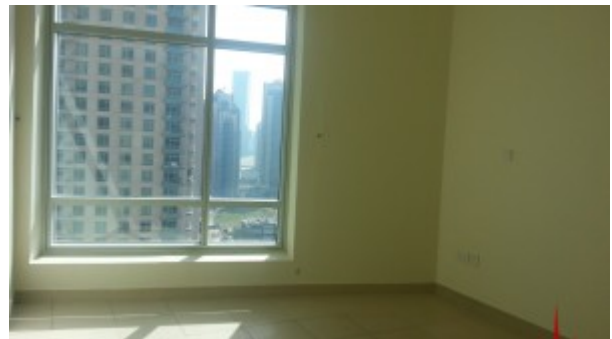
Features:

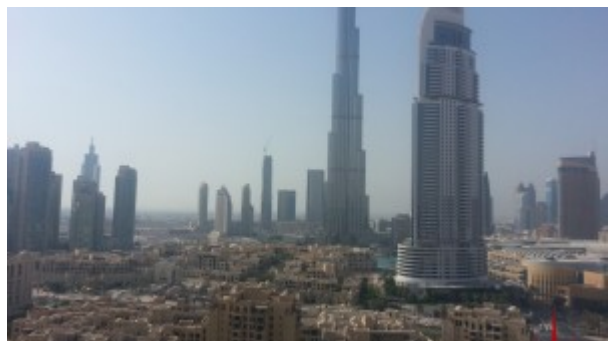
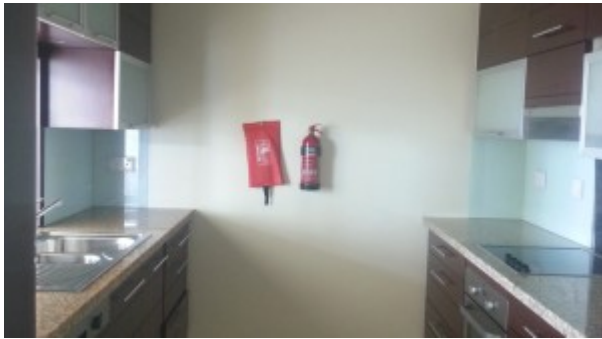
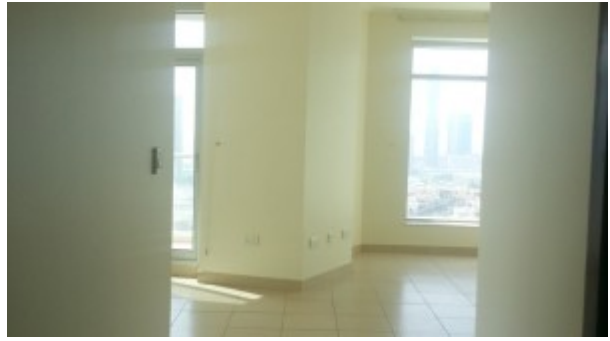
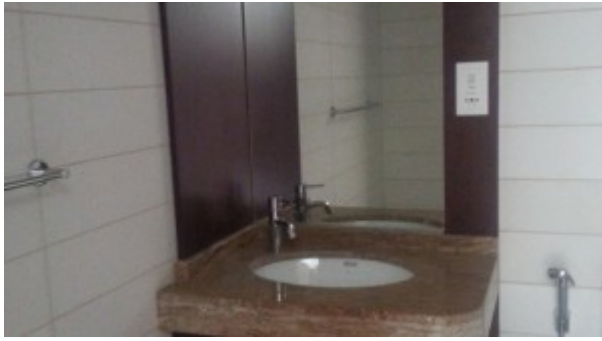
- 2 en-suite bedrooms
- 1 powder room
- Terrace
- Covered area 1,485 square feet
- 1 allocated parking space
- Built-in closets
- Electric stove/oven

- Fridge/freezer
- Dishwasher
- Washing machine
- Coffee shop
- Super market
- Gymnasium
- Swimming Pool
- 24 hours security
- Central A/C
- Landscaped Internal Courtyards
- Maintenance
- Property Management
- Visitors Parking
- Firefighting system
- Light fittings
- Ceramic tiles

Please call us for exclusive viewing
056-2054400/04-3518133
Permit No. 4742

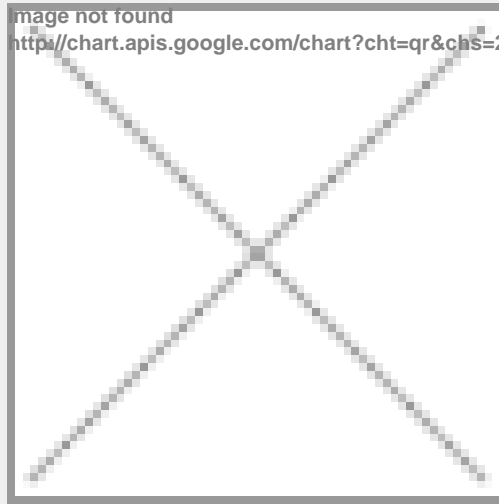
Property Gallery







Property URL



<https://capellaproperties.ae/property/breathtaking-2-bedroom-apt-on-higherf-with-full-b-khalifa-old-town-partial-fountain-view/>