

# 20% Return On Investment For 2 years, 2 BR in 150 Years Old Legacy

**AED 3,880,976** - ID: I-S-R-DTD-OF-0616-03 - Burj Khalifa District - Apartment



Bedrooms	2
Bathrooms	3
Plot Size	1517 sq ft
Living Area	1517 sq ft
Parking	1
Built in	March 2020
Available From	11-Jun-2016
Ensuite	2
Furnished	Fully Furnished and Serviced Apartments
Half Bath	1
Price/Area	2558 sq ft
Posting Date	11/06/2016
View	Creek / Burj Khalifa

**BUA 1,517 Sq Ft – 20% return on investment for 2 years, 2 BR in 150 years old Legacy**

For detailed virtual tours of properties in Dubai, visit [www.capellaproperties.ae](http://www.capellaproperties.ae)  
capella properties, Redefining Real Estate in Dubai UAE

On Signing Reservation Contract – 5% of AED 3,880,976/- = AED 194,048/- June 2016

On Signing SPA – 5% of AED 3,880,976/- = AED 194,048/- July 2016

1st Instalment – 10% of AED 3,880,976/- = AED 388,097/- – December 2017

Completion of G + 2 – 10% of AED 3,880,976/- = AED 388,097/- October 2017

Completion of G + 14 – 10% of AED 3,880,976/- = AED 388,097/- August 2018

Completion of Roof floor – 10% of AED 3,880,976/- = AED 388,097/- Feb 2019

On Completion date – 50% of AED 3,880,976/- = AED 1,940,488/- Q1 2020

Staying true to the legacy of Langham Hotel, the first grand luxury hotel in London, 1865. These serviced apartments bring to Dubai 150 years of hospitality. Langham Place Residences Downtown Dubai is a modern embodiment of the trusted Langham philosophy, elegance in design, excellence in hospitality and unsurpassed luxury services. The development will span a built up area of circa 700,000

square feet, and will encompass a 5-star hotel and residences, offering a signature modern luxury lifestyle experience and adding a total of 406 units to the hospitality sector in Dubai upon completion.

**Unit features:**

- BUA 1,517
- 2 allocated parking space in the basement
- 2 en-suite bathroom
- Ceramic tiles
- Powder room
- Study
- Walk-in closet
- Branded white goods

**Inclusive services:**

- Reception
- Service Stylist
- Concierge
- Valet parking
- Housekeeping
- Security
- Sauna and steam facilities
- Fitness Studio and gymnasium
- Children's facilities
- Children's swimming pool
- Serviced swimming pool with life guards
- Manicured landscape and water feature zones
- Change of day Ritual

**A la carte services:**

- Pay per view television and internet services
- In-room housekeeping room service
- Food and beverage room service
- In room à la carte chef services
- Terms and conditions apply
- Business center services
- Spa services
- Dry cleaning services
- Car cleaning
- Baby sitting

**Community features:**

- 24/7 Security
- Access to hotel pool, gym and exercise facility
- Access to hotel rooftop lounge
- Central Air conditioned
- Childrens club and pool
- Chuan body + soul spa
- Common washroom
- Concierge
- Dedicated lobby for Residents
- Firefighting system
- Maintenance
- Prayers services

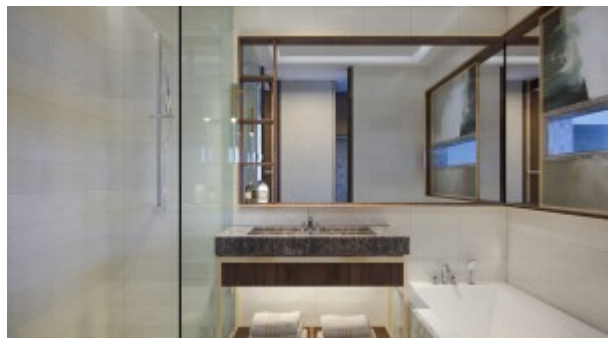
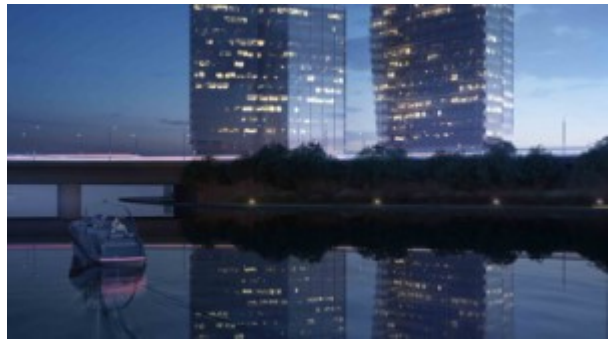
- Visitors parking

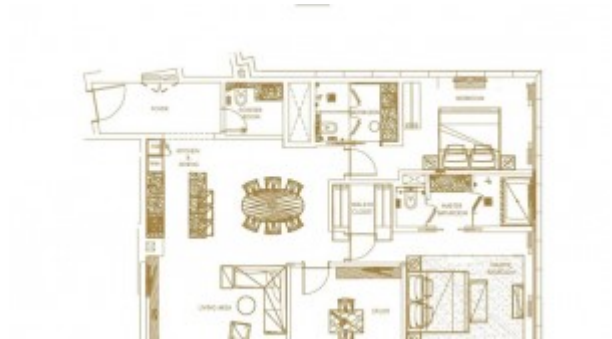
**Please call us for exclusive viewing**

**056-2054400/04-3518133**

**Permit No. 18285**

## **Property Gallery**





## Property URL



http://chart.apis.google.com/chart?cht=qr&chs=250x250&chld=H|0&chl=https%3A%2F%2Fcapellaproperty

<https://capellaproperties.ae/property/20-return-on-investment-for-2-years-2-br-in-150-years-old-legacy-i-s-r-dtd-of-0616-03/>