

capella properties

Panoramic Views of The Lake, A 3 BR That Stands Out in The Downtown Skyline

AED 3,650,000 - ID: SR-DTD-OF-0118-03 - Down Town Dubai - Apartment



Bedrooms	3
Bathrooms	4
Plot Size	2050 sq ft

Living Area	2050 sq ft
Terrace	1 sq ft
Parking	2
Built in	Q2, 2020
Available From	3-Feb-2019
Ensuite	3
Half Bath	1
Maid Room	1
Maids Bath	1
Price/Area	1707 sq ft
Posting Date	03/02/2018
Store	1
View	Downtown/Burj Khalifa/Business Bay lake

BUA 2,050 Sq. Ft, Panoramic Views of The Lake, A 3 Bedroom That Stands Out in The Downtown Skyline

For detailed virtual tours of properties in Dubai, visit www.capellaproperties.ae
capella properties, Redefining Real Estate in Dubai UAE

Stunning 3 bedrooms with panoramic view of the lake/Burj Khalifa located between 15th to 24th floor, all the 3 bedrooms come with the top grade quality used across the board in the development of The Imperial Avenue. The quality of the fixtures is evident in the beautiful images on this link, the white goods are by the renowned Italian brand Miele, every other detail has been paid attention to, from the marble flooring to the water taps in the bathroom. 3 bedroom comes with three different types of layouts.

Shapoorji Palonji comes with a history like no other in the line of developers in Dubai, very have the body of work that comes at par with their work. Already an established name in India, the journey of the developer began in 1937 with Brabourne cricket stadium in Mumbai leading up to the

Sultan of Oman's palace in the 70s, Airport in Nice in the 80s, project contractor for Emaar and Dubai properties and closing with landmark building in Dubai Marina in 2016 (a customized project for the landmark group)

Imperial Avenue is a complete package, truly, in essence, a lifestyle choice with 13 hi-speed elevators, a 10,000 sq feet lobby area which resembles a five-star luxury hotel, the façade of the tower has been designed by the same architect for Armani hotel, Dubai.

The tower hosts an in-house theater, squash court, an infinity pool on 26th floor sky deck overlooking the grandeur of Burj Khalifa, an infinity pool on the 9th floor for families, a grand landscaped podium with a jogging track, dedicated pool for kids and with an easy access a retail section. You will not want to leave.

Another star attraction of the project is an eco-sustainable development using solar panels to provide hot water, grey water harvesting unit and water purifiers making the maintenance fees easily 30% lesser than the surrounding towers.

Payment Plan:

Project Completion Date Q2, 2020

- 3 Year Post Completion Payment Plan: 20% – 80%
- 10% on booking + 4% DLD Fee
- 10% On Completion
- 80% Over a period of 3 years

Unit Features:

- BUA 2,050 sq feet
- 2 parking's
- Built-in wardrobe
- Maids room
- Miele refrigerator
- Miele cooking range

- Miele oven
- Kitchen island
- Laundry room
- State of the art exhaust
- stove
- Walk-in closet

Community Features:

- Landscaped podium
- Dedicated children's pool
- Infinity pool on 26th floor (sky lounge)
- Infinity pool on the 9th floor (for families)
- In-house theater
- 13 high-speed elevator
- 10,000 sq feet lobby area
- Gym
- Laundry services
- Cleaning services
- Work space
- Common landscape area/ lobby lounges
- Security

Please call us for exclusive viewing

056-2054400/04-3518133

Permit No. 18285

Property Gallery



SAMSUNG CSC



SAMSUNG CSC



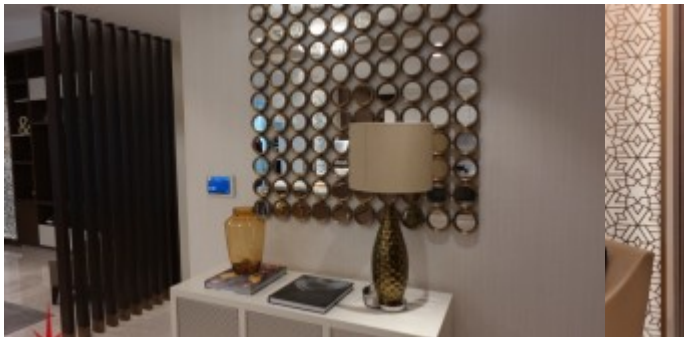
SAMSUNG CSC



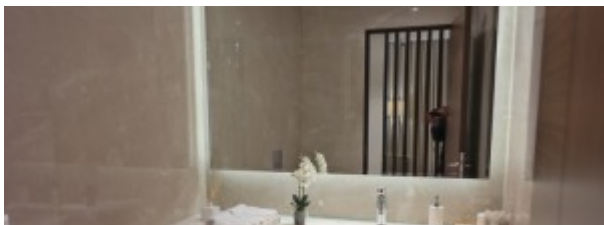
SAMSUNG CSC



SAMSUNG CSC



SAMSUNG CSC



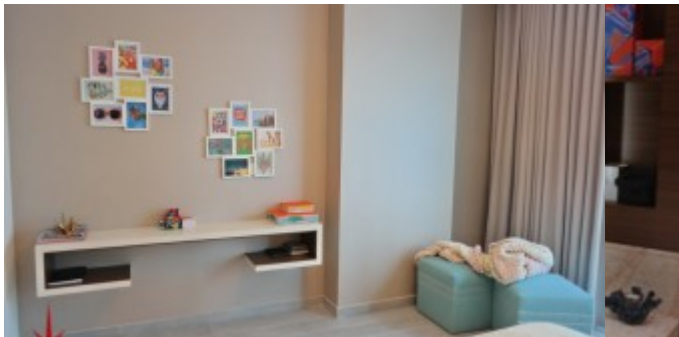
SAMSUNG CSC



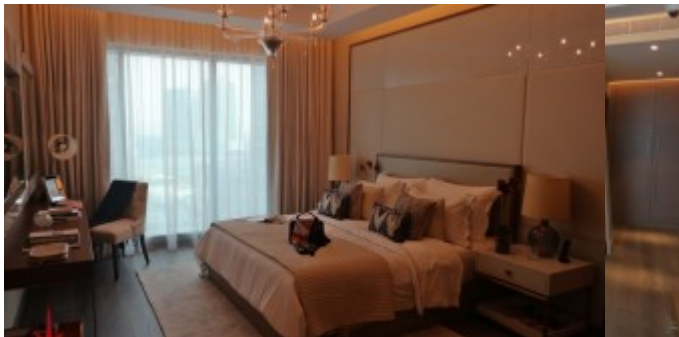
SAMSUNG CSC



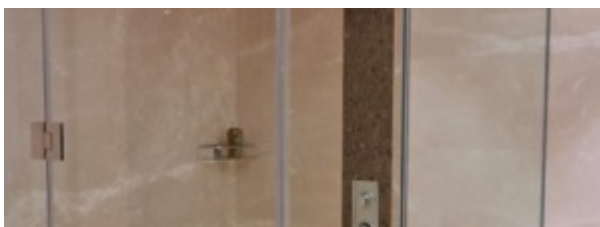
SAMSUNG CSC



SAMSUNG CSC



SAMSUNG CSC



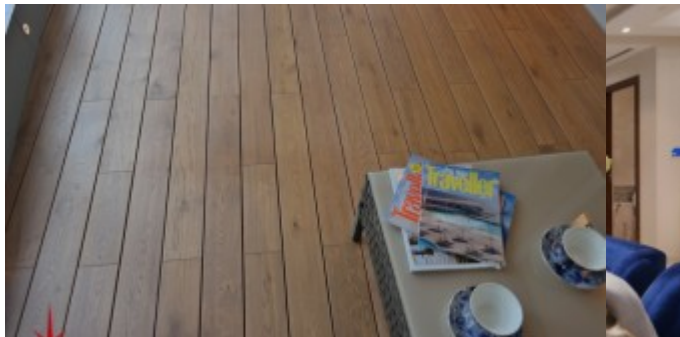
SAMSUNG CSC



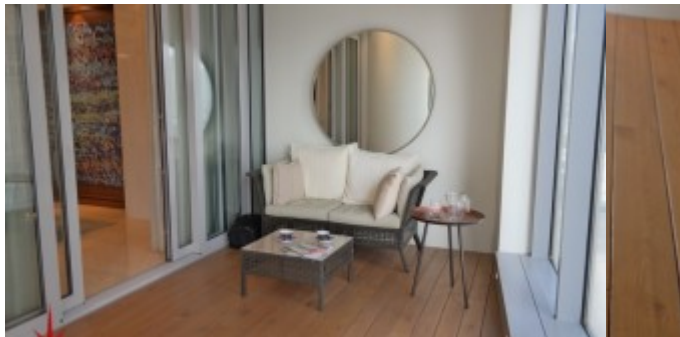
SAMSUNG CSC



SAMSUNG CSC



SAMSUNG CSC



SAMSUNG CSC



Property URL



http://chart.apis.google.com/chart?cht=qr&chs=250x250&chld=H|0&chl=https%3A%2F%2Fcapellaproperty

<https://capellaproperties.ae/lifestyle/property/panoramic-views-of-the-lake-a-3-br-that-stands-out-in-the-downtown-skyline-sr-dtd-of-0118-03/>