

# capella properties

**Palm Jumeirah, Luxurious 2 BR's Apartment with Palm View and a Maids Room on Attractive Payment Plan**

**AED 3,963,000** - ID: I/S/R/PMJ/CP/0515/07 - Palm Jumeirah The Crescent - Apartment



Bedrooms	2
Bathrooms	3
Living Area	1263 sq ft

Parking	1
Built in	Off Plan
Available From	18-May-2015
Ensuite	2
Half Bath	1
Maid Room	1
Maids Bath	1
Price/Area	2906 sq ft
Posting Date	18/05/2015
View	Sea

### **BUA 1,255Sq Ft, Type 2A Palm Jumeirah View with Maids Room**

This unit has an open plan kitchen with large dining area, powder room for the guests, laundry room and a balcony. Two large en-suite bedrooms that are designed for lots of sunlight, master bedroom is designed with a walk-in closet. This units also has a maid's room with washroom.

The Palm Jumeirah continues to lead the market in property value retention. While 45,000 new residential units are scheduled for completion by the end of 2015, only 4% of these projects will take place on the Palm Jumeirah, ensuring real estate in these areas continues to be highly sought. Its limited residential opportunities combined with its unique settings have placed it at the forefront of rental yields as well with Palm Jumeirah apartments and villas commanding a significant premium over other affluent areas

A home on Palm Jumeirah is not an address, it is a destination unto itself; an enviable station reached in one's life. It inspires awe. Exudes success. Embodies elegance. A home on Palm Jumeirah speaks volumes without uttering a single word.

This project is specifically designed to be seductive. Sleek and undeniably sophisticated with ushering in a new era of design to the world's most famous manmade island. Strikingly at odds with its traditional sandstone surroundings,

The Palm extends 6.5 kilometres into the Arabian Peninsula, and is surrounded by an 11 kilometre-long crescent shaped breakwater built with over 7 million tons of rock and sand. It adds 60 kilometres of beach to the coast of the UAE and will be used for private beach residences and around 30 five star hotels

Unparalleled luxury, individual attention to detail, breadth of villas can be yours amid amazing surroundings and world-class amenities.

The Palm is primarily a retreat and residential area for living, relaxation, and leisure. It contains themed boutique hotels, villas, shoreline apartment buildings, beaches, marinas, restaurants, cafes and a variety of retail outlets

Home to the infamous Atlantis resort with its opulence and water parks a favourite with tourists and residents of Dubai

The Palm Jumeirah has been the singularly most important property development ever launched in Dubai. It is this project that has created global interest, and which has been responsible for the establishment of Dubai as the up and coming international property destination of choice

#### **Unit Features:**

- BUA 1,255Sq Ft
- Balcony
- Laundry room
- Light fittings
- Maids room with washroom
- Marble flooring
- Sea View
- Walk-in closet

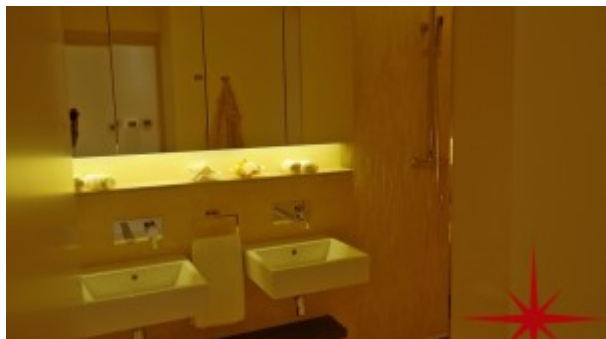
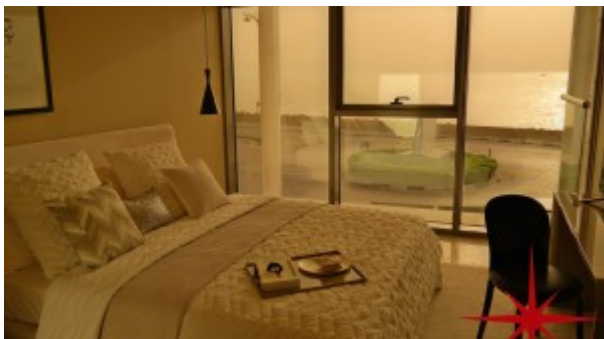
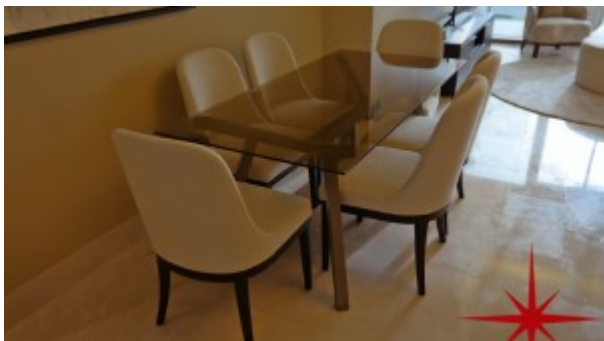
#### **Community Features:**

- 24/7 Security
- Central A/C
- Children's Swimming pool

- Children's play area inside
- Children's play area outside
- Coffee shop
- Firefighting system
- Gymnasium
- Landscaped internal courtyard
- Maintenance
- Pets allowed
- Private beach
- Swimming pool
- Visitors parking

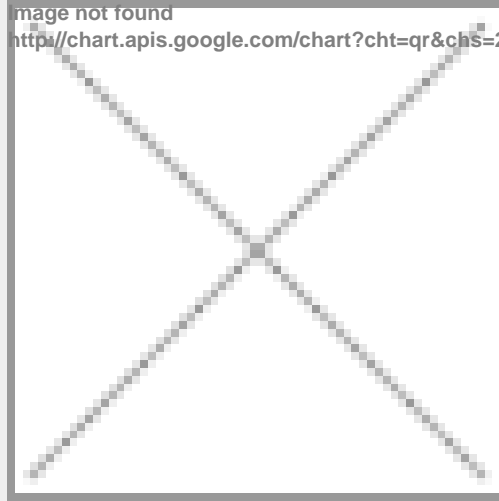
**Please call us for exclusive viewing**  
**056-2054400/04-3518133**  
**Permit No. 18285**

### **Property Gallery**





## Property URL



<https://capellaproperties.ae/lifestyle/property/palm-jumeirah-luxurious-2-brs-apartment-with-sea-view-and-maids-room-on-attractive-payment-plan-2-2-2/>